

Uniglide/Uniglide Unicompartmental Knee Investigation

Note: This analysis compares the Uniglide/Uniglide femoral/tibial combination with all other unicompartmental knee prostheses.

This combination has been identified as having a significantly higher rate of revision. For a detailed explanation of the process used by the Registry that results in identification of prostheses that have a higher than anticipated rate of revision please refer to the Prostheses with Higher than Anticipated Rates of Revision chapter of the most recent AOANJRR Annual Report, <https://aoanjrr.sahmri.com/annual-reports-2025>.

Note: Procedures using prostheses with no recorded use in 2024 are excluded from the comparator.

TABLE 1
Revision Rate of Primary Unicompartmental Knee Replacement

The revision rate of the Uniglide/Uniglide unicompartmental knee combination is compared to all other unicompartmental knee prostheses.

Table 1: Revision Rates of Primary Unicompartmental Knee Replacement

Component	N Revised	N Total	Obs. Years	Revisions/100 Obs. Yrs (95% CI)
Uniglide/Uniglide	208	756	9449	2.20 (1.91, 2.52)
Other Unicompartmental Knee	5258	50910	389433	1.35 (1.31, 1.39)
TOTAL	5466	51666	398882	1.37 (1.33, 1.41)

Note: Prostheses no longer used in 2024 are excluded from the comparator.

TABLE 2

Yearly Cumulative Percent Revision of Primary Unicompartmental Knee Replacement

The yearly cumulative percent revision of the Uniglide/Uniglide unicompartmental knee combination is compared to all other unicompartmental knee prostheses.

Table 2: Yearly Cumulative Percent Revision (95% CI) of Primary Unicompartmental Knee Replacement

CPR	1 Yr	2 Yrs	3 Yrs	4 Yrs	5 Yrs	6 Yrs	7 Yrs	8 Yrs
Uniglide/Uniglide	4.8 (3.5, 6.6)	8.0 (6.3, 10.2)	10.8 (8.8, 13.3)	11.9 (9.8, 14.5)	13.0 (10.8, 15.6)	14.1 (11.8, 16.8)	16.0 (13.5, 18.8)	16.8 (14.3, 19.7)
Other Unicompartmental Knee	1.9 (1.8, 2.0)	3.4 (3.2, 3.6)	4.4 (4.2, 4.6)	5.3 (5.1, 5.5)	6.1 (5.9, 6.4)	7.0 (6.8, 7.3)	8.1 (7.8, 8.3)	9.1 (8.8, 9.4)

CPR	9 Yrs	10 Yrs	11 Yrs	12 Yrs	13 Yrs	14 Yrs	15 Yrs	16 Yrs
Uniglide/Uniglide	19.2 (16.5, 22.2)	19.8 (17.1, 22.9)	20.3 (17.5, 23.4)	21.8 (18.9, 25.0)	24.2 (21.2, 27.6)	25.5 (22.4, 29.0)	27.0 (23.8, 30.6)	28.3 (24.9, 32.0)
Other Unicompartmental Knee	10.2 (9.9, 10.5)	11.3 (11.0, 11.7)	12.5 (12.2, 12.9)	13.8 (13.4, 14.3)	15.2 (14.8, 15.7)	16.8 (16.3, 17.3)	18.2 (17.7, 18.8)	19.7 (19.1, 20.3)

CPR	17 Yrs	18 Yrs	19 Yrs	20 Yrs	21 Yrs	22 Yrs	23 Yrs
Uniglide/Uniglide	30.5 (26.9, 34.4)	32.7 (28.8, 36.9)	34.6 (30.5, 39.2)	34.6 (30.5, 39.2)			
Other Unicompartmental Knee	21.4 (20.7, 22.1)	23.0 (22.3, 23.8)	24.8 (23.9, 25.6)	26.7 (25.7, 27.7)	28.7 (27.6, 29.8)	30.4 (29.1, 31.7)	31.2 (29.7, 32.6)

Note: Prostheses no longer used in 2024 are excluded from the comparator.

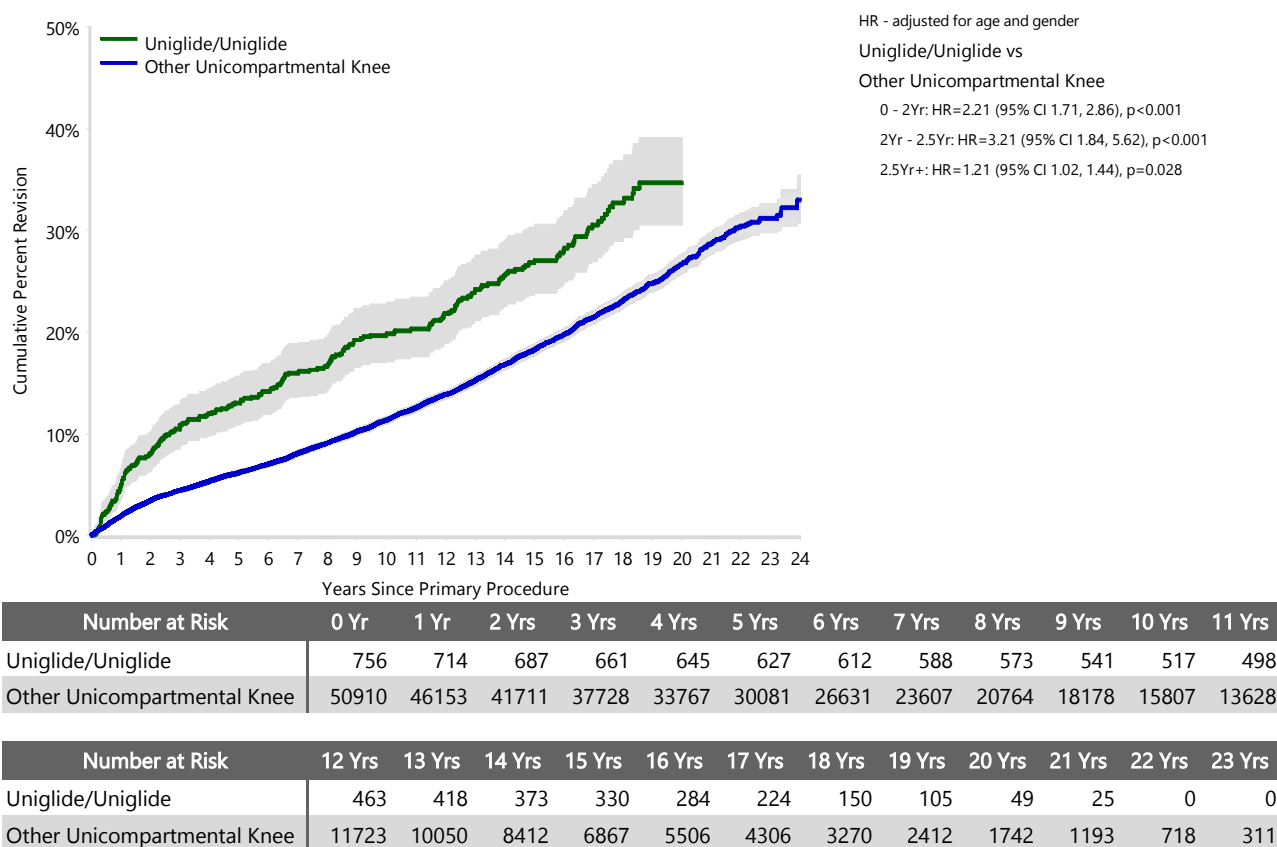
FIGURE 1

Yearly Cumulative Percent Revision of Primary Unicompartmental Knee Replacement

The yearly cumulative percent revision of the Uniglide/Uniglide unicompartmental knee combination is compared to all other unicompartmental knee prostheses. In addition, hazard ratios are reported.

Hazard ratios are reported for specific time periods during which the hazard ratio is constant. This is done to enable more specific and valid comparisons of the risk of revision over time. The pattern of variation in risk has important implications with respect to the underlying reasons for any difference.

Figure 1: Cumulative Percent Revision of Primary Unicompartmental Knee Replacement



Note: Prostheses no longer used in 2024 are excluded from the comparator.

TABLE 3**Primary Diagnosis for Revised Primary Unicompartmental Knee Replacement**

This table identifies the diagnosis of the primary procedure which was subsequently revised. This information is provided as there is a variation on outcome depending on the primary diagnosis. It is therefore important when considering the reasons for a higher than anticipated rate of revision that there is identification of the primary diagnosis. This information should be compared to the primary diagnosis for the revisions of all other unicompartmental knee prostheses.

Table 3: Primary Diagnosis for Revised Primary Unicompartmental Knee Replacement

Primary Diagnosis	Uniglide/Uniglide		Other Unicompartmental Knee	
	Number	Percent	Number	Percent
Osteoarthritis	207	99.5	5206	99.0
Osteonecrosis	1	0.5	30	0.6
Rheumatoid Arthritis			14	0.3
Other Inflammatory Arthritis			5	0.1
Fracture			2	0.0
Tumour			1	0.0
TOTAL	208	100.0	5258	100.0

Note: Prostheses no longer used in 2024 are excluded from the comparator.

TABLE 4

Reasons for Revision

This is reported in two ways: a percentage of primary procedures revised and as a percentage of all revision procedures.

% Primaries Revised: This shows the proportional contribution of each revision diagnosis as a percentage of the total number of primary procedures. This percentage can be used to approximate the risk of being revised for that diagnosis. Differing percentages between groups, with the same distribution of follow up time, may identify problems of concern.

% Revisions: The number of revisions for each diagnosis is expressed as a percentage of the total number of revisions. This shows the distribution of reasons for revision within a group but cannot be used as a comparison between groups.

Table 4: Primary Unicompartmental Knee Replacement - Reason for Revision (Follow-up Limited to 21.9 Years)

Revision Diagnosis	Uniglide/Uniglide			Other Unicompartmental Knee		
	Number	% Primaries Revised	% Revisions	Number	% Primaries Revised	% Revisions
Progression Of Disease	61	8.1	29.3	2006	3.9	38.2
Loosening	80	10.6	38.5	1592	3.1	30.3
Pain	15	2.0	7.2	375	0.7	7.1
Infection	5	0.7	2.4	269	0.5	5.1
Bearing Dislocation	13	1.7	6.3	201	0.4	3.8
Fracture	5	0.7	2.4	160	0.3	3.0
Instability	5	0.7	2.4	109	0.2	2.1
Lysis	8	1.1	3.8	97	0.2	1.8
Wear Tibial Insert	5	0.7	2.4	88	0.2	1.7
Malalignment				66	0.1	1.3
Implant Breakage Tibial Insert	4	0.5	1.9	60	0.1	1.1
Incorrect Sizing	1	0.1	0.5	31	0.1	0.6
Patellofemoral Pain	1	0.1	0.5	30	0.1	0.6
Implant Breakage Tibial				28	0.1	0.5
Prosthesis Dislocation				27	0.1	0.5
Metal Related Pathology	2	0.3	1.0	15	0.0	0.3
Osteonecrosis	1	0.1	0.5	13	0.0	0.2
Wear Tibial				12	0.0	0.2
Arthrofibrosis				11	0.0	0.2
Synovitis				11	0.0	0.2
Wear Femoral				5	0.0	0.1
Implant Breakage Femoral				4	0.0	0.1
Patella Erosion	1	0.1	0.5	3	0.0	0.1
Tumour	1	0.1	0.5			
Other				33	0.1	0.6
N Revision	208	27.5	100.0	5246	10.3	100.0
N Primary	756			50910		

Note: This table is restricted to revisions within 21.9 years for all groups to allow a time-matched comparison of revisions.

Note: Prostheses no longer used in 2024 are excluded from the comparator.

FIGURE 2

Cumulative Incidence Revision Diagnosis of Primary Unicompartmental Knee Replacement

This figure details the cumulative incidence of the most common reasons for revision. The five most common reasons for revision are included as long as each of these reasons account for more than 10 procedures or at least 5% of all revisions for the Uniglide/Uniglide unicompartmental knee combination. A comparative graph is provided of the cumulative incidence for the same reasons for revisions for all other unicompartmental knee prostheses.

Figure 2: Cumulative Incidence Revision Diagnosis for Primary Unicompartmental Knee Replacement

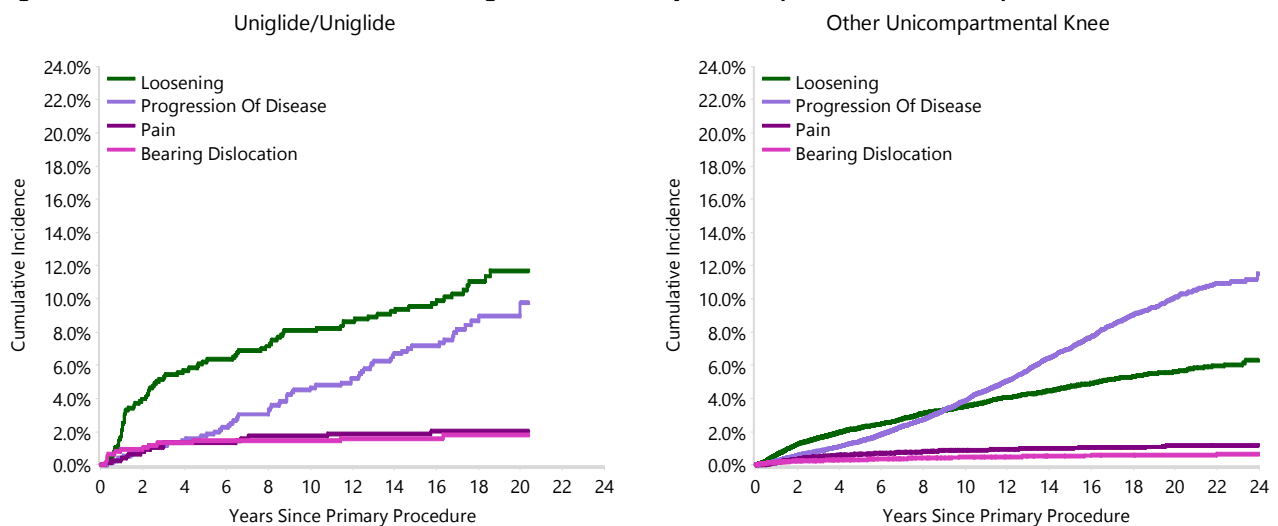


TABLE 5

Type of Revision Performed for Primary Unicompartmental Knee Replacement

This analysis identifies the components used in the revision of the Uniglide/Uniglide unicompartmental knee combination and compares it to the components used in the revision of all other unicompartmental knee prostheses.

The reason this analysis is undertaken is to identify whether there is one or more components which are being replaced that differ from the components replaced for revisions of all other unicompartmental knee prostheses i.e. is there a difference in the type of revision undertaken for the Uniglide/Uniglide unicompartmental knee combination compared to all other unicompartmental knee prostheses.

Table 5: Primary Unicompartmental Knee Replacement - Type of Revision (Follow-up Limited to 21.9 Years)

Type of Revision	Uniglide/Uniglide		Other Unicompartmental Knee	
	Number	Percent	Number	Percent
TKR (Tibial/Femoral)	167	80.3	4424	84.3
Uni Tibial Component	7	3.4	95	1.8
Uni Femoral Component	2	1.0	47	0.9
Cement Spacer	2	1.0	40	0.8
UKR (Uni Tibial/Uni Femoral)	2	1.0	35	0.7
Patella/Trochlear Resurfacing			16	0.3
Removal of Prostheses			5	0.1
Femoral Component			4	0.1
Reinsertion of Components			4	0.1
Tibial Component			1	0.0
N Major	180	86.5	4671	89.0
Uni Insert Only	26	12.5	574	10.9
Patella Only	2	1.0	1	0.0
N Minor	28	13.5	575	11.0
TOTAL	208	100.0	5246	100.0

Note: This table is restricted to revisions within 21.9 years for all groups to allow a time-matched comparison of revisions.

Note: Prostheses no longer used in 2024 are excluded from the comparator.

TABLE 6**Revision Rates of Uniglide/Uniglide Primary Unicompartmental Knee Replacement by Fixation**

This analysis is provided as some prostheses have more than one fixation option. Additionally there are prostheses where an alternative to the recommended approach to fixation was used e.g. a cementless prosthesis that has been cemented or vice-versa.

Table 6: Revised Number of Uniglide/Uniglide Primary Unicompartmental Knee Replacement by Fixation

Fixation	N Revised	N Total
Cemented	69	356
Cementless	76	227
Hybrid (Tibial Cemented)	57	155
Hybrid (Tibial Cementless)	6	18
TOTAL	208	756

TABLE 7

Revision Rates of Primary Unicompartmental Knee Replacement by State

This enables a state by state variation to be identified for the Uniglide/Uniglide unicompartmental knee combination and provides the comparative data for each of the states for all other unicompartmental knee prostheses.

The purpose of this analysis is to determine if the higher than anticipated rate of revision has widespread distribution between states. If there is widespread distribution then the reason for the higher than anticipated rate of revision is unlikely to be surgeon specific. If the prosthesis has been used in only a small number of states it is not possible to distinguish if the higher than anticipated rate of revision is related to the prosthesis, surgeon, technique or patient.

Table 7: Revised Number of Primary Unicompartmental Knee Replacement by State

Component	State	N Revised	N Total
Uniglide/Uniglide	NSW	125	536
	VIC	38	109
	QLD	2	7
	SA	42	103
	TAS	1	1
Other Unicompartmental Knee	NSW	1479	12313
	VIC	1049	11729
	QLD	958	10315
	WA	700	8024
	SA	729	5299
	TAS	194	2150
	ACT/NT	149	1080
TOTAL		5466	51666

Note: Prostheses no longer used in 2024 are excluded from the comparator.

TABLE 8**Number of Revisions of Uniglides/Uniglides Primary Unicompartamental Knee Replacement by Year of Implant**

This analysis details the number of prostheses reported each year to the Registry for the Uniglides/Uniglides unicompartamental knee combination. It also provides the subsequent number of revisions of the primaries reported in that year.

Primary procedures performed in later years have had less follow up time therefore the number revised is expected to be less than the number revised in earlier years. For example, a primary procedure performed in 2024 has a maximum of one year to be revised, whereas a primary procedure performed in 2022 has a maximum of three years to be revised.

Table 8: Number of Revisions of Uniglides/Uniglides Primary Unicompartamental Knee Replacement by Year of Implant

Year of Implant	Number Revised	Total Number
2003	28	80
2004	23	66
2005	41	123
2006	22	84
2007	25	107
2008	19	93
2009	17	61
2010	6	30
2011	14	38
2012	6	25
2013	3	22
2014	0	9
2015	0	5
2016	2	8
2017	1	3
2019	0	1
2020	1	1
TOTAL	208	756

TABLE 9

Revision Rates of Uniglide/Uniglide Primary Unicompartmental Knee Replacement by Catalogue Number Range

Many prostheses have a number of catalogue ranges. The catalogue range is specific to particular design features; more than one catalogue range usually indicates a minor difference in design in a particular Uniglide/Uniglide prosthesis.

This analysis has been undertaken to determine if the revision rate varies according to the catalogue number range.

Model	Catalogue Range	Catalogue Description	Cement	Mobility	Material	Coating
Femoral						
Uniglide	5140200-5140400	COCR HA TINI UNI FEMORAL COMPONENT	NO			HA COATED
Uniglide	5150200-5150400	COCR TINI UNI FEMORAL COMPONENT	YES			
Tibial						
Uniglide	5240200-5240800	COCR TINI UNI TIBIAL COMPONENT	YES			
Uniglide	5250200-5250800	COCR HA TINI UNI TIBIAL COMPONENT	NO			HA COATED
Uniglide	5301307-5301713	UNIGLIDE FIXED TIBIA	YES	FIXED	NON CROSS-LINKED POLYETHYLENE	

Table 9: Revised Number of Uniglide/Uniglide Primary Unicompartmental Knee Replacement by Catalogue Number Range

Femoral Range	Tibial Range	N Revised	N Total
5140200-5140400	5240200-5240800	25	70
	5250200-5250800	77	228
	5301307-5301713	32	86
5150200-5150400	5240200-5240800	57	317
	5250200-5250800	6	18
	5301307-5301713	11	37
TOTAL		208	756