

SPH-Blind Total Conventional Hip Investigation

Note: This analysis compares the SPH-Blind acetabular prosthesis with all other total conventional hip prostheses.

This prosthesis has been identified as having a significantly higher rate of revision. For a detailed explanation of the process used by the Registry that results in identification of prostheses that have a higher than anticipated rate of revision please refer to the Prostheses with Higher than Anticipated Rates of Revision chapter of the most recent AOANJRR Annual Report, <https://aoanjrr.sahmri.com/annual-reports-2025>.

Note: Procedures using metal/metal prostheses with head size larger than 32mm are excluded from the comparator. Procedures using prostheses with no recorded use in 2024 are excluded from the comparator.

TABLE 1
Revision Rate of Primary Total Conventional Hip Replacement

The revision rate of the SPH-Blind total conventional hip prosthesis is compared to all other total conventional hip prostheses.

Table 1: Revision Rates of Primary Total Conventional Hip Replacement

Component	N Revised	N Total	Obs. Years	Revisions/100 Obs. Yrs (95% CI)
SPH-Blind	134	952	13809	0.97 (0.81, 1.15)
Other Total Conventional Hip	19492	552154	3552443	0.55 (0.54, 0.56)
TOTAL	19626	553106	3566251	0.55 (0.54, 0.56)

Note: Prostheses no longer used in 2024 are excluded from the comparator. Procedures using metal/metal prostheses with head size larger than 32mm are excluded from the comparator.

TABLE 2

Yearly Cumulative Percent Revision of Primary Total Conventional Hip Replacement

The yearly cumulative percent revision of the SPH-Blind total conventional hip prosthesis is compared to all other total conventional hip prostheses.

Table 2: Yearly Cumulative Percent Revision (95% CI) of Primary Total Conventional Hip Replacement

CPR	1 Yr	2 Yrs	3 Yrs	4 Yrs	5 Yrs	6 Yrs	7 Yrs	8 Yrs
SPH-Blind	3.8 (2.8, 5.2)	4.8 (3.6, 6.3)	5.8 (4.5, 7.5)	6.5 (5.1, 8.3)	7.3 (5.8, 9.2)	8.4 (6.8, 10.4)	8.9 (7.2, 11.0)	9.8 (8.0, 11.9)
Other Total Conventional Hip	1.7 (1.7, 1.8)	2.2 (2.1, 2.2)	2.5 (2.4, 2.5)	2.8 (2.7, 2.8)	3.0 (3.0, 3.1)	3.3 (3.3, 3.4)	3.6 (3.5, 3.6)	3.9 (3.8, 3.9)

CPR	9 Yrs	10 Yrs	11 Yrs	12 Yrs	13 Yrs	14 Yrs	15 Yrs	16 Yrs
SPH-Blind	10.1 (8.3, 12.3)	10.4 (8.6, 12.6)	10.8 (8.9, 13.0)	11.8 (9.8, 14.1)	12.4 (10.3, 14.8)	12.8 (10.8, 15.3)	14.4 (12.2, 17.0)	14.8 (12.5, 17.4)
Other Total Conventional Hip	4.2 (4.1, 4.2)	4.4 (4.4, 4.5)	4.8 (4.7, 4.8)	5.2 (5.1, 5.3)	5.5 (5.4, 5.6)	5.9 (5.8, 6.0)	6.3 (6.2, 6.4)	6.7 (6.6, 6.9)

CPR	17 Yrs	18 Yrs	19 Yrs	20 Yrs	21 Yrs	22 Yrs	23 Yrs
SPH-Blind	15.1 (12.8, 17.8)	15.5 (13.1, 18.2)	16.0 (13.5, 18.8)	16.7 (14.2, 19.6)	17.3 (14.7, 20.4)	17.3 (14.7, 20.4)	17.3 (14.7, 20.4)
Other Total Conventional Hip	7.1 (6.9, 7.2)	7.4 (7.3, 7.6)	7.9 (7.7, 8.1)	8.3 (8.0, 8.5)	8.8 (8.5, 9.1)	9.3 (9.0, 9.7)	9.9 (9.4, 10.5)

Note: Prostheses no longer used in 2024 are excluded from the comparator. Procedures using metal/metal prostheses with head size larger than 32mm are excluded from the comparator.

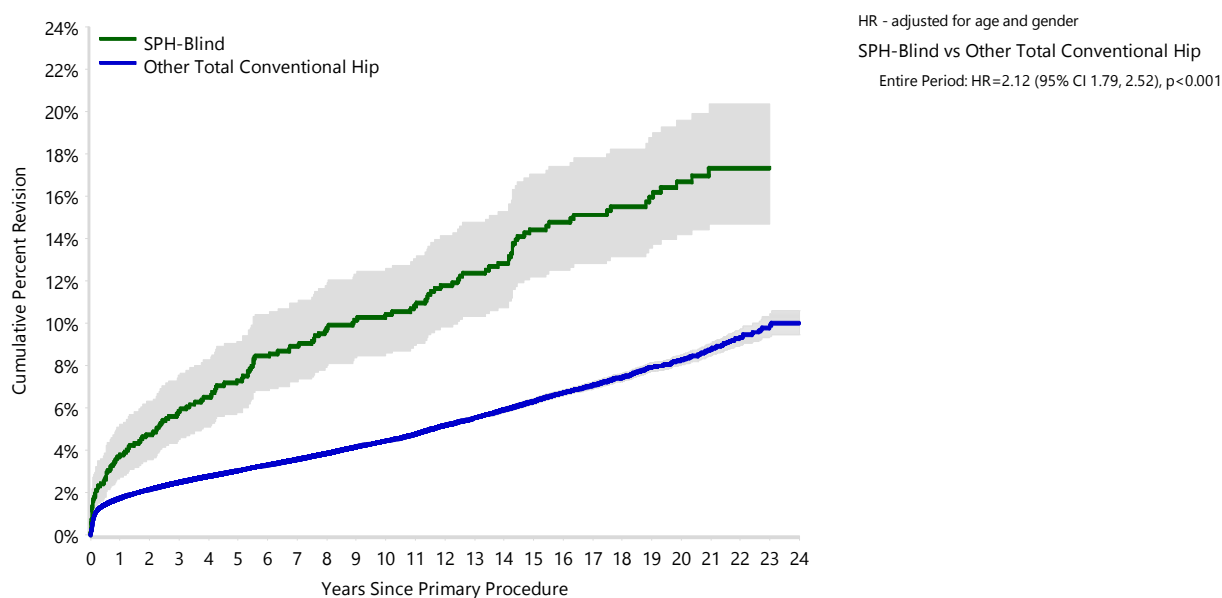
FIGURE 1

Yearly Cumulative Percent Revision of Primary Total Conventional Hip Replacement

The yearly cumulative percent revision of the SPH-Blind total conventional hip prosthesis is compared to all other total conventional hip prostheses. In addition, hazard ratios are reported.

Hazard ratios are reported for specific time periods during which the hazard ratio is constant. This is done to enable more specific and valid comparisons of the risk of revision over time. The pattern of variation in risk has important implications with respect to the underlying reasons for any difference.

Figure 1: Cumulative Percent Revision of Primary Total Conventional Hip Replacement



Number at Risk	0 Yr	1 Yr	2 Yrs	3 Yrs	4 Yrs	5 Yrs	6 Yrs	7 Yrs	8 Yrs	9 Yrs	10 Yrs	11 Yrs
SPH-Blind	952	908	884	862	835	811	785	763	730	706	681	654
Other Total Conventional Hip	552154	487715	432817	384210	337213	295811	254946	217123	182233	150376	122151	99378

Number at Risk	12 Yrs	13 Yrs	14 Yrs	15 Yrs	16 Yrs	17 Yrs	18 Yrs	19 Yrs	20 Yrs	21 Yrs	22 Yrs	23 Yrs
SPH-Blind	620	581	555	517	491	458	426	365	321	232	122	42
Other Total Conventional Hip	80223	63999	49890	37936	28064	20581	15102	10871	7426	4536	2346	851

Note: Prostheses no longer used in 2024 are excluded from the comparator. Procedures using metal/metal prostheses with head size larger than 32mm are excluded from the comparator.

TABLE 3**Primary Diagnosis for Revised Primary Total Conventional Hip Replacement**

This table identifies the diagnosis of the primary procedure which was subsequently revised. This information is provided as there is a variation on outcome depending on the primary diagnosis. It is therefore important when considering the reasons for a higher than anticipated rate of revision that there is identification of the primary diagnosis. This information should be compared to the primary diagnosis for the revisions of all other total conventional hip prostheses.

Table 3: Primary Diagnosis for Revised Primary Total Conventional Hip Replacement

Primary Diagnosis	SPH-Blind		Other Total Conventional Hip	
	Number	Percent	Number	Percent
Osteoarthritis	117	87.3	16174	83.0
Fractured Neck Of Femur	1	0.7	1436	7.4
Osteonecrosis	8	6.0	856	4.4
Developmental Dysplasia	4	3.0	313	1.6
Rheumatoid Arthritis	1	0.7	210	1.1
Failed Internal Fixation	1	0.7	157	0.8
Tumour	1	0.7	148	0.8
Other Inflammatory Arthritis			112	0.6
Fracture/Dislocation			53	0.3
Other			19	0.1
Arthrodesis Takedown	1	0.7	14	0.1
TOTAL	134	100.0	19492	100.0

Note: Prostheses no longer used in 2024 are excluded from the comparator. Procedures using metal/metal prostheses with head size larger than 32mm are excluded from the comparator.

TABLE 4**Reasons for Revision**

This is reported in two ways: a percentage of primary procedures revised and as a percentage of all revision procedures.

% Primaries Revised: This shows the proportional contribution of each revision diagnosis as a percentage of the total number of primary procedures. This percentage can be used to approximate the risk of being revised for that diagnosis. Differing percentages between groups, with the same distribution of follow up time, may identify problems of concern.

% Revisions: The number of revisions for each diagnosis is expressed as a percentage of the total number of revisions. This shows the distribution of reasons for revision within a group but cannot be used as a comparison between groups.

Table 4: Primary Total Conventional Hip Replacement - Reason for Revision

Revision Diagnosis	Number	SPH-Blind		Other Total Conventional Hip		
		% Primaries Revised	% Revisions	Number	% Primaries Revised	% Revisions
Infection	10	1.1	7.5	4771	0.9	24.5
Prosthesis Dislocation/Instability	28	2.9	20.9	4403	0.8	22.6
Fracture	17	1.8	12.7	4347	0.8	22.3
Loosening	46	4.8	34.3	3707	0.7	19.0
Pain	4	0.4	3.0	327	0.1	1.7
Leg Length Discrepancy				297	0.1	1.5
Malposition	1	0.1	0.7	269	0.0	1.4
Lysis	7	0.7	5.2	209	0.0	1.1
Implant Breakage Stem	8	0.8	6.0	201	0.0	1.0
Implant Breakage Acetabular Insert	6	0.6	4.5	127	0.0	0.7
Wear Acetabular Insert	1	0.1	0.7	109	0.0	0.6
Incorrect Sizing				98	0.0	0.5
Metal Related Pathology				92	0.0	0.5
Implant Breakage Acetabular	5	0.5	3.7	68	0.0	0.3
Wear Head				43	0.0	0.2
Tumour				40	0.0	0.2
Implant Breakage Head	1	0.1	0.7	31	0.0	0.2
Heterotopic Bone				27	0.0	0.1
Wear Acetabulum				10	0.0	0.1
Osteonecrosis				3	0.0	0.0
Synovitis				1	0.0	0.0
Other				312	0.1	1.6
N Revision	134	14.1	100.0	19492	3.5	100.0
N Primary	952			552154		

Note: Prostheses no longer used in 2024 are excluded from the comparator. Procedures using metal/metal prostheses with head size larger than 32mm are excluded from the comparator.

FIGURE 2

Cumulative Incidence Revision Diagnosis of Primary Total Conventional Hip Replacement

This figure details the cumulative incidence of the most common reasons for revision. The five most common reasons for revision are included as long as each of these reasons account for more than 10 procedures or at least 5% of all revisions for the SPH-Blind total conventional hip prosthesis. A comparative graph is provided of the cumulative incidence for the same reasons for revisions for all other total conventional hip prostheses.

Figure 2: Cumulative Incidence Revision Diagnosis for Primary Total Conventional Hip Replacement

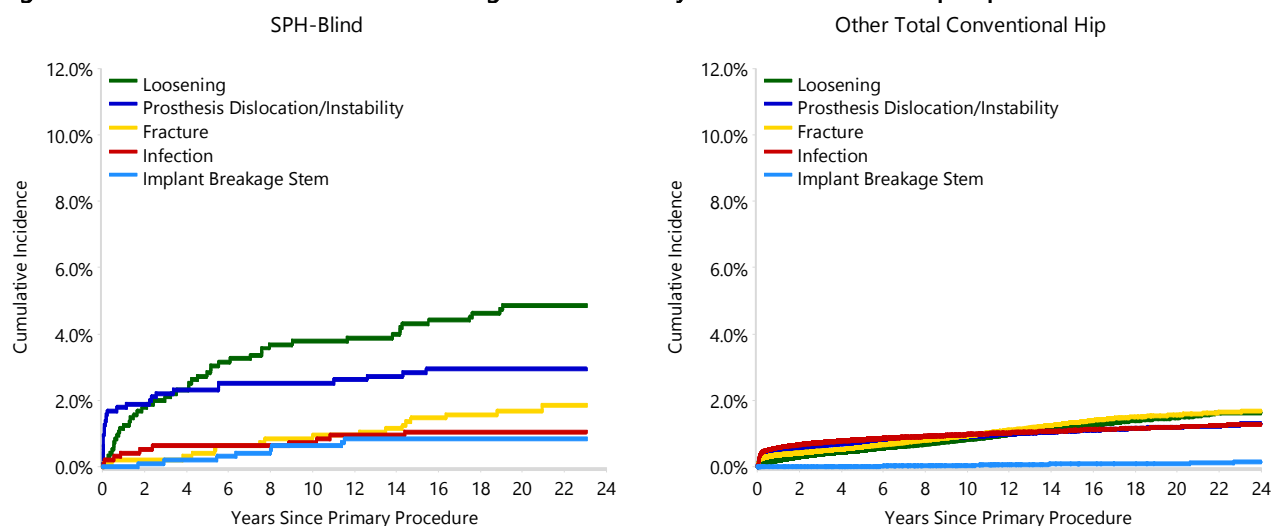


TABLE 5

Type of Revision Performed for Primary Total Conventional Hip Replacement

This analysis identifies the components used in the revision of the SPH-Blind total conventional hip prosthesis and compares it to the components used in the revision of all other total conventional hip prostheses.

The reason this analysis is undertaken is to identify whether there is one or more components which are being replaced that differ from the components replaced for revisions of all other total conventional hip prostheses i.e. is there a difference in the type of revision undertaken for the SPH-Blind total conventional hip prosthesis compared to all other total conventional hip prostheses.

Table 5: Primary Total Conventional Hip Replacement - Type of Revision

Type of Revision	SPH-Blind		Other Total Conventional Hip	
	Number	Percent	Number	Percent
Femoral Component	42	31.3	6562	33.7
Acetabular Component	36	26.9	3419	17.5
THR (Femoral/Acetabular)	17	12.7	2258	11.6
Cement Spacer	2	1.5	593	3.0
Removal of Prostheses			98	0.5
Reinsertion of Components			29	0.1
Total Femoral	1	0.7	13	0.1
Bipolar Head and Femoral			9	0.0
N Major	98	73.1	12981	66.6
Head/Insert	13	9.7	5100	26.2
Head Only	3	2.2	924	4.7
Minor Components	3	2.2	305	1.6
Insert Only	1	0.7	179	0.9
Head/Neck/Insert	10	7.5		
Head/Neck	5	3.7	1	0.0
Bipolar Only			1	0.0
Cement Only			1	0.0
Neck/Insert	1	0.7		
N Minor	36	26.9	6511	33.4
TOTAL	134	100.0	19492	100.0

Note: Prostheses no longer used in 2024 are excluded from the comparator. Procedures using metal/metal prostheses with head size larger than 32mm are excluded from the comparator.

TABLE 6**Revision Rates of SPH-Blind Primary Total Conventional Hip Replacement by Fixation**

This analysis is provided as some prostheses have more than one fixation option. Additionally there are prostheses where an alternative to the recommended approach to fixation was used e.g. a cementless prosthesis that has been cemented or vice-versa.

Table 6: Revised Number of SPH-Blind Primary Total Conventional Hip Replacement by Fixation

Fixation	N Revised	N Total
Cemented	1	2
Cementless	112	770
Hybrid (Femur Cemented)	21	178
Reverse Hybrid (Femur Cementless)	0	2
TOTAL	134	952

TABLE 7**Revision Rates of SPH-Blind Primary Total Conventional Hip Replacement by Bearing Surface**

This analysis is provided as some prostheses are combined with a variety of bearing surfaces. All bearing surfaces used with this prosthesis are listed.

Table 7: Revised Number of SPH-Blind Primary Total Conventional Hip Replacement by Bearing Surface

Bearing Surface	N Revised	N Total
Ceramic/Ceramic	96	641
Ceramic/Non XLPE	9	61
Metal/Metal	0	1
Metal/Non XLPE	29	247
Unknown	0	2
TOTAL	134	952

TABLE 8

Revision Rates of Primary Total Conventional Hip Replacement by State

This enables a state by state variation to be identified for the SPH-Blind total conventional hip prosthesis and provides the comparative data for each of the states for all other total conventional hip prostheses.

The purpose of this analysis is to determine if the higher than anticipated rate of revision has widespread distribution between states. If there is widespread distribution then the reason for the higher than anticipated rate of revision is unlikely to be surgeon specific. If the prosthesis has been used in only a small number of states it is not possible to distinguish if the higher than anticipated rate of revision is related to the prosthesis, surgeon, technique or patient.

Table 8: Revised Number of Primary Total Conventional Hip Replacement by State

Component	State	N Revised	N Total
SPH-Blind	NSW	41	379
	VIC	9	105
	QLD	40	288
	WA	37	136
	ACT/NT	7	44
Other Total Conventional Hip	NSW	5288	159916
	VIC	4851	143812
	QLD	3893	100102
	WA	2492	62236
	SA	1926	51998
	TAS	448	18480
	ACT/NT	594	15610
TOTAL		19626	553106

Note: Prostheses no longer used in 2024 are excluded from the comparator. Procedures using metal/metal prostheses with head size larger than 32mm are excluded from the comparator.

TABLE 9**Number of Revisions of SPH-Blind Primary Total Conventional Hip Replacement by Year of Implant**

This analysis details the number of prostheses reported each year to the Registry for the SPH-Blind total conventional hip prosthesis. It also provides the subsequent number of revisions of the primaries reported in that year.

Primary procedures performed in later years have had less follow up time therefore the number revised is expected to be less than the number revised in earlier years. For example, a primary procedure performed in 2024 has a maximum of one year to be revised, whereas a primary procedure performed in 2022 has a maximum of three years to be revised.

Table 9: Number of Revisions of SPH-Blind Primary Total Conventional Hip Replacement by Year of Implant

Year of Implant	Number Revised	Total Number
2000	2	32
2001	17	116
2002	25	229
2003	40	261
2004	30	205
2005	8	41
2006	9	49
2007	3	19
TOTAL	134	952

TABLE 10

Revision Rates of SPH-Blind Primary Total Conventional Hip Replacement by Catalogue Number Range

Many prostheses have a number of catalogue ranges. The catalogue range is specific to particular design features; more than one catalogue range usually indicates a minor difference in design in a particular SPH-Blind prosthesis.

This analysis has been undertaken to determine if the revision rate varies according to the catalogue number range.

Model	Catalogue Range	Catalogue Description	Cement	Material
Acetabular				
SPH-Blind	552925010-552925120	SPH BLIND ACETABULAR CUP	NO	METAL

Table 10: Revised Number of SPH-Blind Primary Total Conventional Hip Replacement by Catalogue Number Range

Acetabular Range	N Revised	N Total
552925010-552925120	134	952
TOTAL	134	952

TABLE 11

Revision Rates of SPH-Blind Primary Total Conventional Hip Replacement by Component

A prosthesis may be combined with multiple components. This analysis has been undertaken to determine if the revision rate varies according to the component with which it is combined.

Table 11: Revised Number of SPH-Blind Primary Total Conventional Hip Replacement by Femoral Stem Component

Femoral Stem Component	N Revised	N Total
AcuMatch M-Series	1	6
Apex	9	35
C-Stem	2	10
C2	1	3
CORAIL	0	11
Elite Plus	0	5
Esop	0	1
Exeter V40	1	10
F2L	73	616
Friendly Hip	19	145
GMRS	0	1
Generic Modular Body	1	2
H Moos	0	7
MS 30	0	1
Margron	20	49
Modulus	0	3
PFM-R	0	1
Restoration	0	1
Revision Hip	0	10
S-Rom	1	3
Secur-Fit Plus HA	0	1
Stability	1	4
Summit	1	3
UniSyn	4	23
VerSys Heritage	0	1
TOTAL	134	952