

ASR/ASR Total Resurfacing Hip Investigation

Note: This analysis compares the ASR/ASR head/acetabular combination with all other total resurfacing hip prostheses.

This combination has been identified as having a significantly higher rate of revision. For a detailed explanation of the process used by the Registry that results in identification of prostheses that have a higher than anticipated rate of revision please refer to the Prostheses with Higher than Anticipated Rates of Revision chapter of the most recent AOANJRR Annual Report, <https://aoanjrr.sahmri.com/annual-reports-2025>.

Note: Procedures using prostheses with no recorded use in 2024 are excluded from the comparator.

TABLE 1
Revision Rate of Primary Total Resurfacing Hip Replacement

The revision rate of the ASR/ASR total resurfacing hip combination is compared to all other total resurfacing hip prostheses.

Table 1: Revision Rates of Primary Total Resurfacing Hip Replacement

Component	N Revised	N Total	Obs. Years	Revisions/100 Obs. Yrs (95% CI)
ASR/ASR	426	1168	15824	2.69 (2.44, 2.96)
Other Total Resurfacing Hip	1313	16808	215628	0.61 (0.58, 0.64)
TOTAL	1739	17976	231452	0.75 (0.72, 0.79)

Note: Prostheses no longer used in 2024 are excluded from the comparator.

TABLE 2

Yearly Cumulative Percent Revision of Primary Total Resurfacing Hip Replacement

The yearly cumulative percent revision of the ASR/ASR total resurfacing hip combination is compared to all other total resurfacing hip prostheses.

Table 2: Yearly Cumulative Percent Revision (95% CI) of Primary Total Resurfacing Hip Replacement

CPR	1 Yr	2 Yrs	3 Yrs	4 Yrs	5 Yrs	6 Yrs	7 Yrs	8 Yrs
ASR/ASR	3.4 (2.5, 4.6)	5.1 (4.0, 6.6)	7.2 (5.9, 8.8)	10.3 (8.7, 12.2)	15.5 (13.5, 17.7)	19.4 (17.3, 21.8)	23.2 (20.8, 25.7)	26.0 (23.6, 28.7)
Other Total Resurfacing Hip	1.3 (1.2, 1.5)	1.9 (1.7, 2.1)	2.3 (2.1, 2.5)	2.7 (2.5, 3.0)	3.2 (2.9, 3.5)	3.7 (3.4, 4.0)	4.3 (4.0, 4.7)	4.9 (4.6, 5.3)

CPR	9 Yrs	10 Yrs	11 Yrs	12 Yrs	13 Yrs	14 Yrs	15 Yrs	16 Yrs
ASR/ASR	28.0 (25.5, 30.7)	29.9 (27.4, 32.7)	31.3 (28.8, 34.1)	32.6 (30.0, 35.4)	34.0 (31.3, 36.8)	35.0 (32.4, 37.9)	35.4 (32.7, 38.3)	36.1 (33.4, 39.0)
Other Total Resurfacing Hip	5.4 (5.0, 5.8)	6.1 (5.7, 6.5)	6.6 (6.2, 7.0)	7.1 (6.7, 7.6)	7.8 (7.3, 8.2)	8.3 (7.8, 8.8)	8.8 (8.3, 9.3)	9.3 (8.8, 9.8)

CPR	17 Yrs	18 Yrs	19 Yrs	20 Yrs	21 Yrs	22 Yrs	23 Yrs
ASR/ASR	36.5 (33.8, 39.4)	37.0 (34.3, 39.9)	37.4 (34.6, 40.3)	37.9 (35.1, 40.9)			
Other Total Resurfacing Hip	9.8 (9.3, 10.4)	10.2 (9.7, 10.8)	10.7 (10.1, 11.3)	11.2 (10.6, 11.8)	11.7 (11.0, 12.4)	12.1 (11.4, 12.8)	12.3 (11.6, 13.1)

Note: Prostheses no longer used in 2024 are excluded from the comparator.

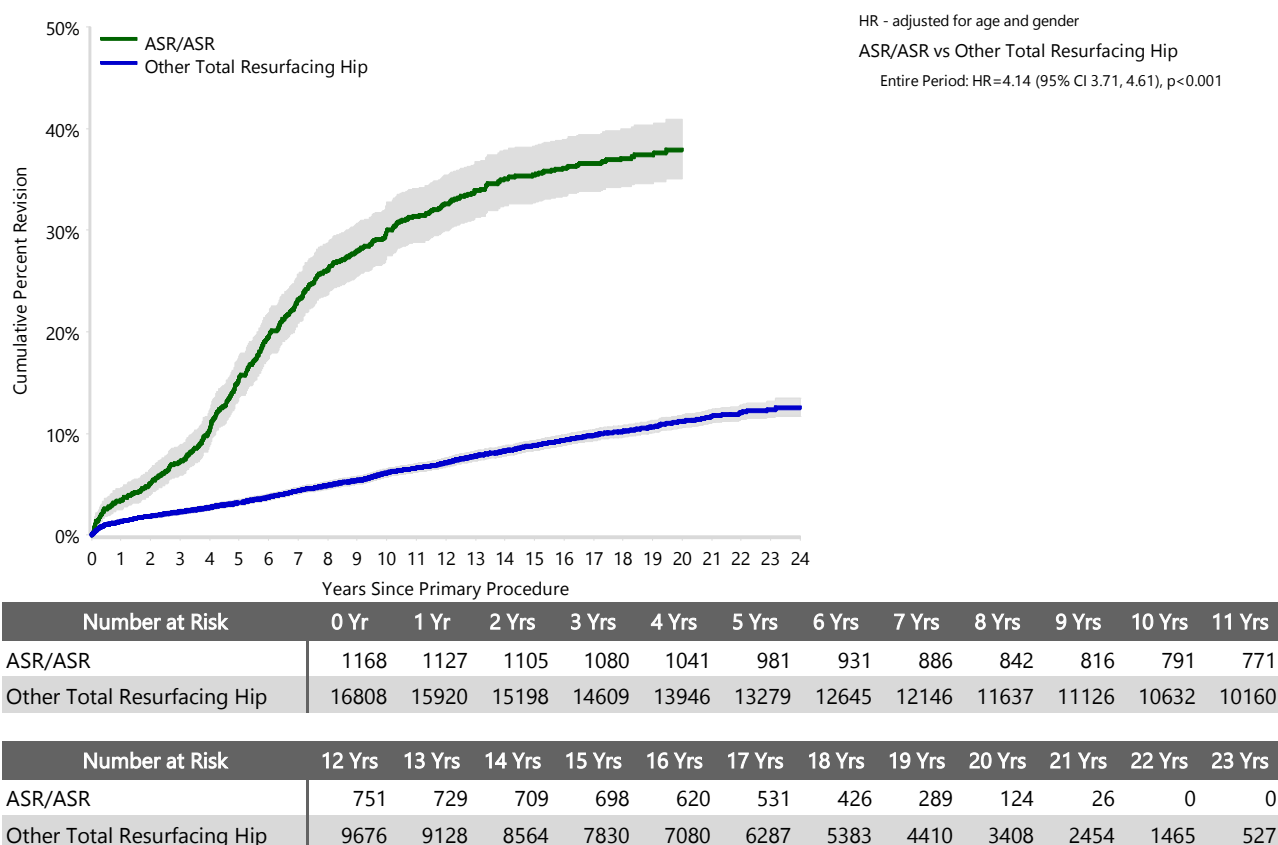
FIGURE 1

Yearly Cumulative Percent Revision of Primary Total Resurfacing Hip Replacement

The yearly cumulative percent revision of the ASR/ASR total resurfacing hip combination is compared to all other total resurfacing hip prostheses. In addition, hazard ratios are reported.

Hazard ratios are reported for specific time periods during which the hazard ratio is constant. This is done to enable more specific and valid comparisons of the risk of revision over time. The pattern of variation in risk has important implications with respect to the underlying reasons for any difference.

Figure 1: Cumulative Percent Revision of Primary Total Resurfacing Hip Replacement



Note: Prostheses no longer used in 2024 are excluded from the comparator.

TABLE 3**Primary Diagnosis for Revised Primary Total Resurfacing Hip Replacement**

This table identifies the diagnosis of the primary procedure which was subsequently revised. This information is provided as there is a variation on outcome depending on the primary diagnosis. It is therefore important when considering the reasons for a higher than anticipated rate of revision that there is identification of the primary diagnosis. This information should be compared to the primary diagnosis for the revisions of all other total resurfacing hip prostheses.

Table 3: Primary Diagnosis for Revised Primary Total Resurfacing Hip Replacement

Primary Diagnosis	ASR/ASR		Other Total Resurfacing Hip	
	Number	Percent	Number	Percent
Osteoarthritis	386	90.6	1205	91.8
Developmental Dysplasia	33	7.7	52	4.0
Osteonecrosis	4	0.9	39	3.0
Other Inflammatory Arthritis			10	0.8
Rheumatoid Arthritis	3	0.7	6	0.5
Other			1	0.1
TOTAL	426	100.0	1313	100.0

Note: Prostheses no longer used in 2024 are excluded from the comparator.

TABLE 4

Reasons for Revision

This is reported in two ways: a percentage of primary procedures revised and as a percentage of all revision procedures.

% Primaries Revised: This shows the proportional contribution of each revision diagnosis as a percentage of the total number of primary procedures. This percentage can be used to approximate the risk of being revised for that diagnosis. Differing percentages between groups, with the same distribution of follow up time, may identify problems of concern.

% Revisions: The number of revisions for each diagnosis is expressed as a percentage of the total number of revisions. This shows the distribution of reasons for revision within a group but cannot be used as a comparison between groups.

Table 4: Primary Total Resurfacing Hip Replacement - Reason for Revision (Follow-up Limited to 21.4 Years)

Revision Diagnosis	Number	ASR/ASR		Other Total Resurfacing Hip		
		% Primaries Revised	% Revisions	Number	% Primaries Revised	% Revisions
Loosening	65	5.6	15.3	344	2.0	26.4
Metal Related Pathology	243	20.8	57.0	278	1.7	21.3
Fracture	37	3.2	8.7	256	1.5	19.6
Lysis	28	2.4	6.6	138	0.8	10.6
Infection	17	1.5	4.0	87	0.5	6.7
Pain	23	2.0	5.4	74	0.4	5.7
Prosthesis Dislocation/Instability	2	0.2	0.5	34	0.2	2.6
Osteonecrosis	6	0.5	1.4	33	0.2	2.5
Malposition	1	0.1	0.2	22	0.1	1.7
Tumour				7	0.0	0.5
Wear Acetabulum				3	0.0	0.2
Implant Breakage Acetabular	1	0.1	0.2	2	0.0	0.2
Implant Breakage Head	2	0.2	0.5			
Leg Length Discrepancy				2	0.0	0.2
Heterotopic Bone				1	0.0	0.1
Implant Breakage Stem				1	0.0	0.1
Incorrect Sizing				1	0.0	0.1
Synovitis				1	0.0	0.1
Other	1	0.1	0.2	21	0.1	1.6
N Revision	426	36.5	100.0	1305	7.8	100.0
N Primary	1168			16808		

Note: This table is restricted to revisions within 21.4 years for all groups to allow a time-matched comparison of revisions.

Note: Prostheses no longer used in 2024 are excluded from the comparator.

FIGURE 2**Cumulative Incidence Revision Diagnosis of Primary Total Resurfacing Hip Replacement**

This figure details the cumulative incidence of the most common reasons for revision. The five most common reasons for revision are included as long as each of these reasons account for more than 10 procedures or at least 5% of all revisions for the ASR/ASR total resurfacing hip combination. A comparative graph is provided of the cumulative incidence for the same reasons for revisions for all other total resurfacing hip prostheses.

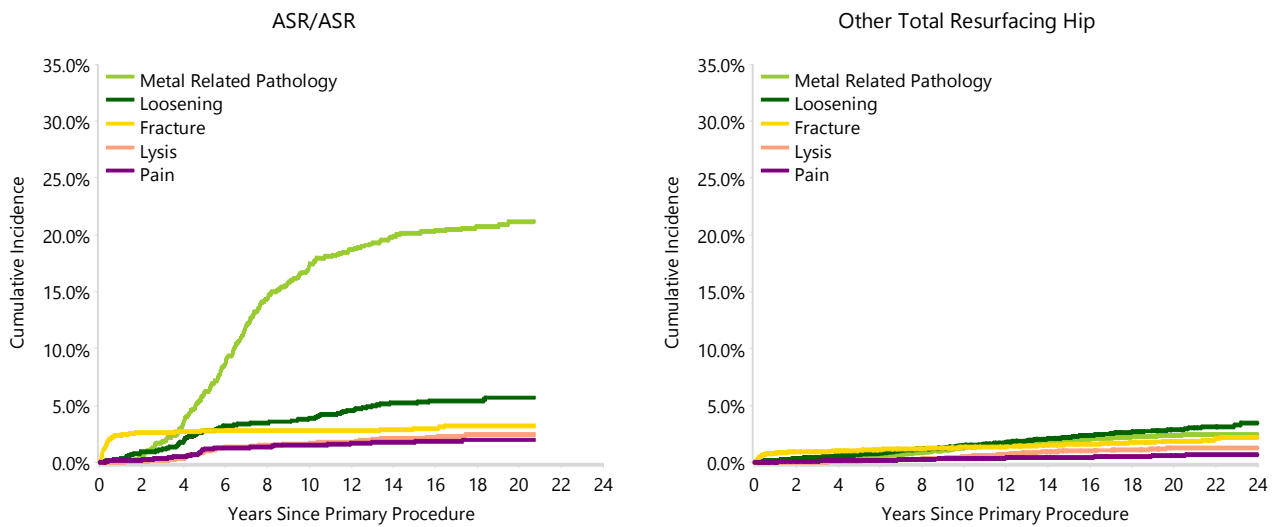
Figure 2: Cumulative Incidence Revision Diagnosis for Primary Total Resurfacing Hip Replacement

TABLE 5

Type of Revision Performed for Primary Total Resurfacing Hip Replacement

This analysis identifies the components used in the revision of the ASR/ASR total resurfacing hip combination and compares it to the components used in the revision of all other total resurfacing hip prostheses.

The reason this analysis is undertaken is to identify whether there is one or more components which are being replaced that differ from the components replaced for revisions of all other total resurfacing hip prostheses i.e. is there a difference in the type of revision undertaken for the ASR/ASR total resurfacing hip combination compared to all other total resurfacing hip prostheses.

Table 5: Primary Total Resurfacing Hip Replacement - Type of Revision (Follow-up Limited to 21.4 Years)

Type of Revision	ASR/ASR		Other Total Resurfacing Hip	
	Number	Percent	Number	Percent
THR (Femoral/Acetabular)	368	86.4	874	67.0
Femoral Component	48	11.3	355	27.2
Acetabular Component	7	1.6	39	3.0
Cement Spacer	2	0.5	28	2.1
Removal of Prostheses	1	0.2	7	0.5
N Major	426	100.0	1303	99.8
Head/Insert			1	0.1
Minor Components			1	0.1
N Minor			2	0.2
TOTAL	426	100.0	1305	100.0

Note: This table is restricted to revisions within 21.4 years for all groups to allow a time-matched comparison of revisions.

Note: Prostheses no longer used in 2024 are excluded from the comparator.

TABLE 6**Revision Rates of ASR/ASR Primary Total Resurfacing Hip Replacement by Fixation**

This analysis is provided as some prostheses have more than one fixation option. Additionally there are prostheses where an alternative to the recommended approach to fixation was used e.g. a cementless prosthesis that has been cemented or vice-versa.

Table 6: Revised Number of ASR/ASR Primary Total Resurfacing Hip Replacement by Fixation

Fixation	N Revised	N Total
Cemented	1	9
Hybrid (Femur Cemented)	425	1159
TOTAL	426	1168

TABLE 7

Revision Rates of Primary Total Resurfacing Hip Replacement by State

This enables a state by state variation to be identified for the ASR/ASR total resurfacing hip combination and provides the comparative data for each of the states for all other total resurfacing hip prostheses.

The purpose of this analysis is to determine if the higher than anticipated rate of revision has widespread distribution between states. If there is widespread distribution then the reason for the higher than anticipated rate of revision is unlikely to be surgeon specific. If the prosthesis has been used in only a small number of states it is not possible to distinguish if the higher than anticipated rate of revision is related to the prosthesis, surgeon, technique or patient.

Table 7: Revised Number of Primary Total Resurfacing Hip Replacement by State

Component	State	N Revised	N Total
ASR/ASR	NSW	86	251
	VIC	84	245
	QLD	23	87
	WA	2	3
	SA	221	561
	TAS	1	4
	ACT/NT	9	17
Other Total Resurfacing Hip	NSW	322	4366
	VIC	471	5313
	QLD	296	4465
	WA	67	1297
	SA	96	655
	TAS	1	36
	ACT/NT	60	676
TOTAL		1739	17976

Note: Prostheses no longer used in 2024 are excluded from the comparator.

TABLE 8**Number of Revisions of ASR/ASR Primary Total Resurfacing Hip Replacement by Year of Implant**

This analysis details the number of prostheses reported each year to the Registry for the ASR/ASR total resurfacing hip combination. It also provides the subsequent number of revisions of the primaries reported in that year.

Primary procedures performed in later years have had less follow up time therefore the number revised is expected to be less than the number revised in earlier years. For example, a primary procedure performed in 2024 has a maximum of one year to be revised, whereas a primary procedure performed in 2022 has a maximum of three years to be revised.

Table 8: Number of Revisions of ASR/ASR Primary Total Resurfacing Hip Replacement by Year of Implant

Year of Implant	Number Revised	Total Number
2003	11	43
2004	57	165
2005	104	302
2006	112	258
2007	71	176
2008	47	133
2009	24	91
TOTAL	426	1168

TABLE 9

Revision Rates of ASR/ASR Primary Total Resurfacing Hip Replacement by Catalogue Number Range

Many prostheses have a number of catalogue ranges. The catalogue range is specific to particular design features; more than one catalogue range usually indicates a minor difference in design in a particular ASR/ASR prosthesis.

This analysis has been undertaken to determine if the revision rate varies according to the catalogue number range.

Model	Catalogue Range	Catalogue Description	Cement	Material	Coating	Fixation
Head						
ASR	999801532-999801556	MOM RS FEMORAL HEAD	YES	METAL		
ASR	999803239-999805763	ASR TOTAL FEMORAL IMPLANT	YES	METAL		
Acetabular						
ASR	999800044-999800070	MOM RS STANDARD ACETABULAR CUP	NO	METAL		POROUS
ASR	999803944-999806370	ASR TOTAL ACETABULAR IMPLANT	NO	METAL	HA COATED	

Table 9: Revised Number of ASR/ASR Primary Total Resurfacing Hip Replacement by Catalogue Number Range

Head Range	Acetabular Range	N Revised	N Total
999801532-999801556	999800044-999800070	17	59
999803239-999805763	999803944-999806370	409	1109
TOTAL		426	1168