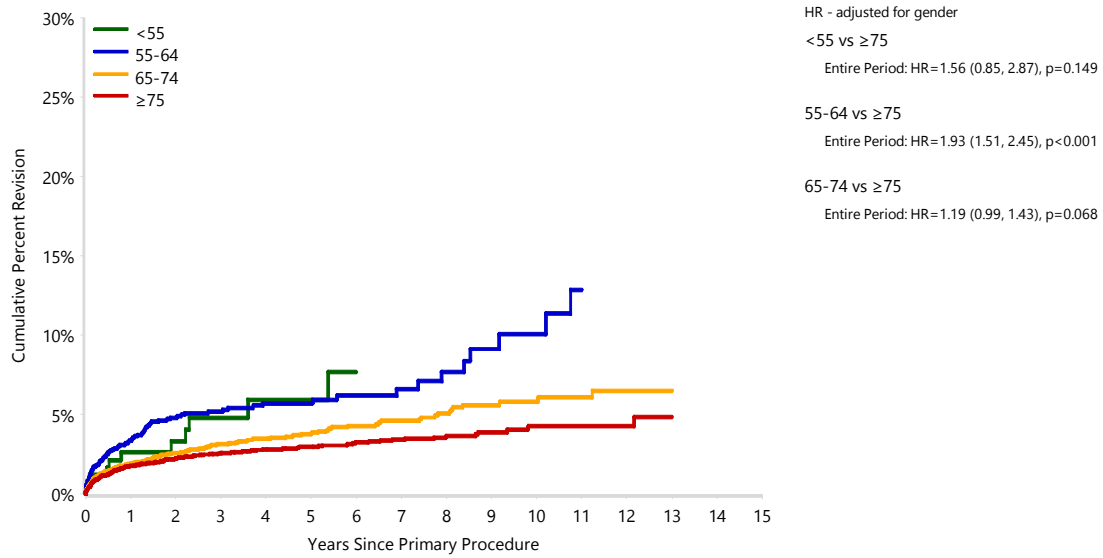


Figure ST35 Cumulative Percent Revision of Primary Total Reverse Shoulder Replacement by Age (Primary Diagnosis OA)



Number at Risk	0 Yr	1 Yr	3 Yrs	5 Yrs	7 Yrs	10 Yrs	14 Yrs
<55	248	178	103	58	32	11	2
55-64	1780	1369	832	436	218	73	5
65-74	6961	5711	3632	2088	1048	336	29
≥75	8711	7295	4789	2782	1497	452	23

Note: Restricted to modern prostheses