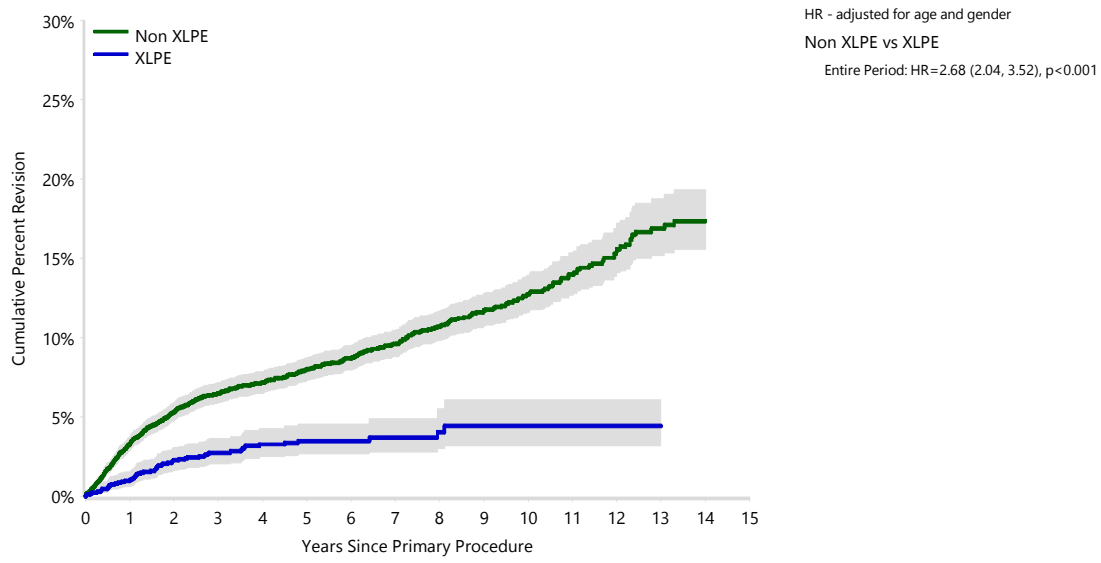


Figure ST24 Cumulative Percent Revision of Primary Total Stemmed Shoulder Replacement using All Types of Glenoids by Polyethylene Type (Primary Diagnosis OA)



| Number at Risk | 0 Yr | 1 Yr | 3 Yrs | 5 Yrs | 7 Yrs | 10 Yrs | 14 Yrs |
|----------------|------|------|-------|-------|-------|--------|--------|
| Non XLPE | 6368 | 5723 | 4583 | 3458 | 2360 | 1025 | 162 |
| XLPE | 1899 | 1721 | 1264 | 801 | 343 | 172 | 19 |

Note: Restricted to modern prostheses