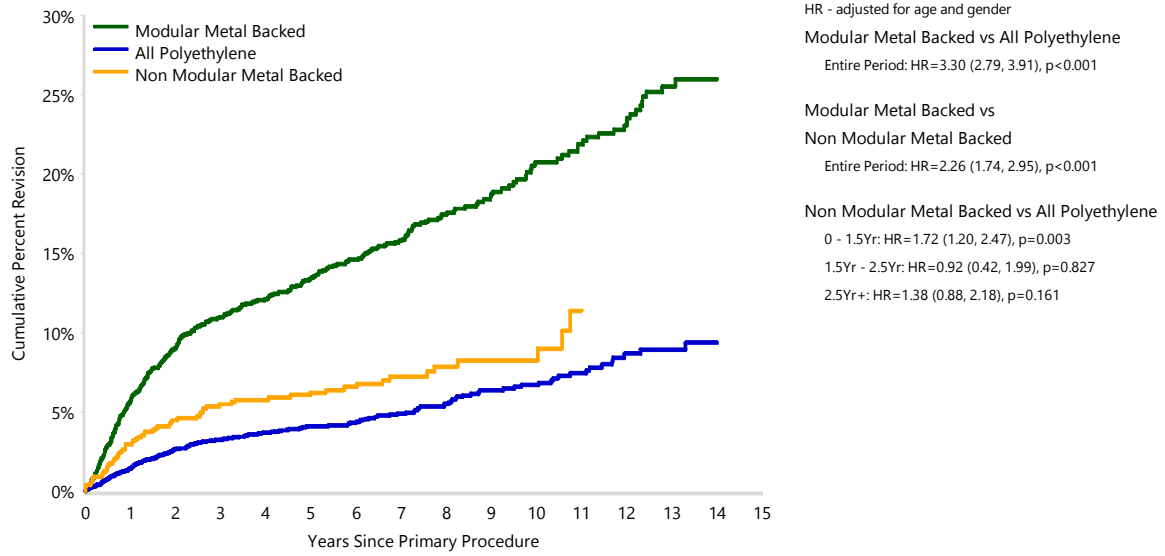


Figure ST21 Cumulative Percent Revision of Primary Total Stemmed Shoulder Replacement by Glenoid Type (Primary Diagnosis OA)



Number at Risk	0 Yr	1 Yr	3 Yrs	5 Yrs	7 Yrs	10 Yrs	14 Yrs
Modular Metal Backed	2178	1973	1680	1368	947	371	57
All Polyethylene	5125	4595	3461	2314	1390	706	124
Non Modular Metal Backed	966	877	707	577	366	120	0

Note: Only fixations with >100 procedures have been listed
Restricted to modern prostheses