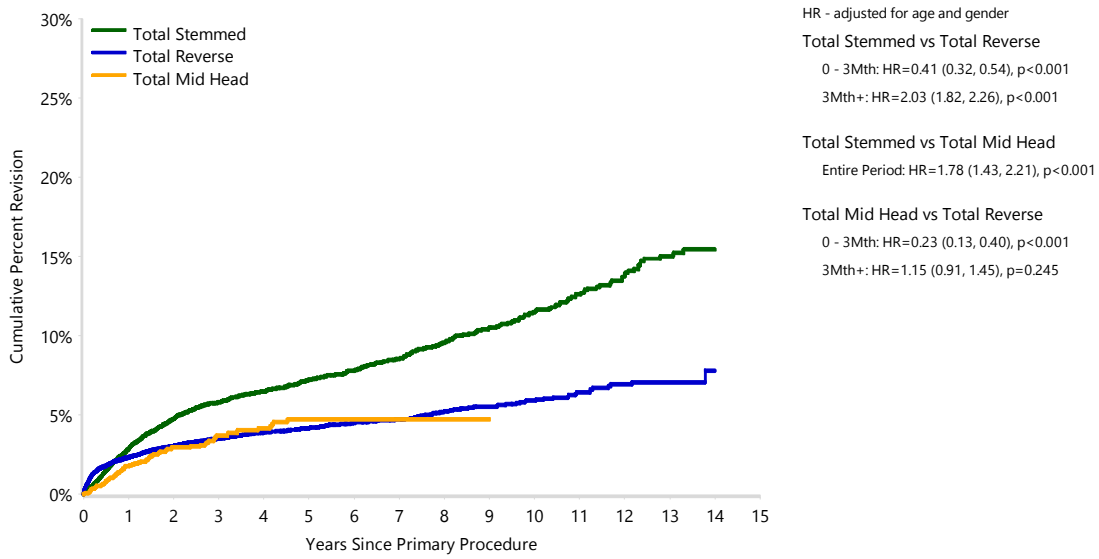


**Figure ST2 Cumulative Percent Revision of Primary Total Shoulder Replacement by Class (All Diagnoses)**



Number at Risk	0 Yr	1 Yr	3 Yrs	5 Yrs	7 Yrs	10 Yrs	14 Yrs
Total Stemmed	8757	7882	6183	4493	2857	1267	193
Total Reverse	40538	32852	20674	11444	5909	1661	99
Total Mid Head	3079	2375	1207	463	137	1	0

Note: Restricted to modern prostheses