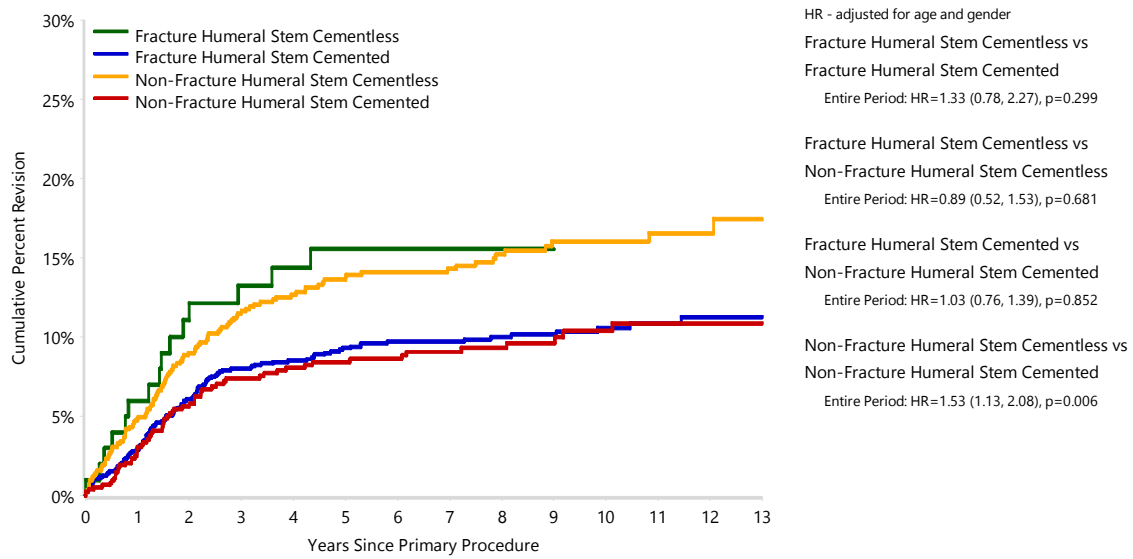


**Figure SPS12 Cumulative Percent Revision of Primary Hemi Stemmed Shoulder Replacement by Stem Type and Humeral Fixation (Primary Diagnosis Fracture)**



Number at Risk		0 Yr	1 Yr	3 Yrs	5 Yrs	7 Yrs	10 Yrs	14 Yrs
Fracture Humeral Stem	Cementless	100	94	78	67	38	7	1
	Cemented	1420	1309	1099	897	696	365	35
Non-Fracture Humeral Stem	Cementless	825	747	615	528	425	211	15
	Cemented	752	671	564	464	363	183	18