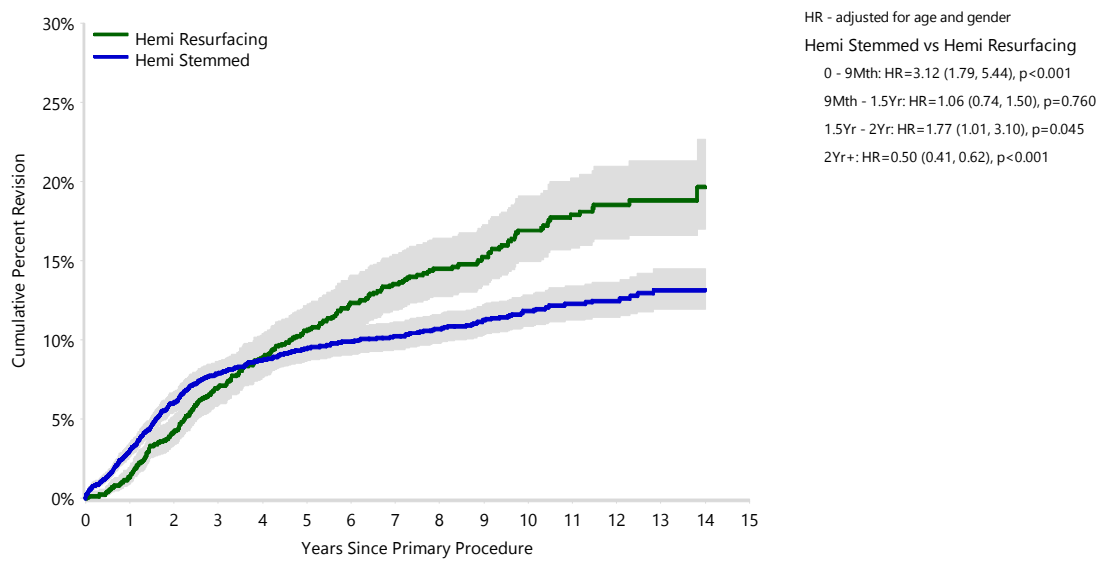


Figure SP2 Cumulative Percent Revision of Primary Partial Shoulder Replacement by Class (All Diagnoses)



Number at Risk	0 Yr	1 Yr	3 Yrs	5 Yrs	7 Yrs	10 Yrs	14 Yrs
Hemi Resurfacing	1790	1707	1435	1166	926	571	88
Hemi Stemmed	5542	4963	4018	3297	2536	1322	135