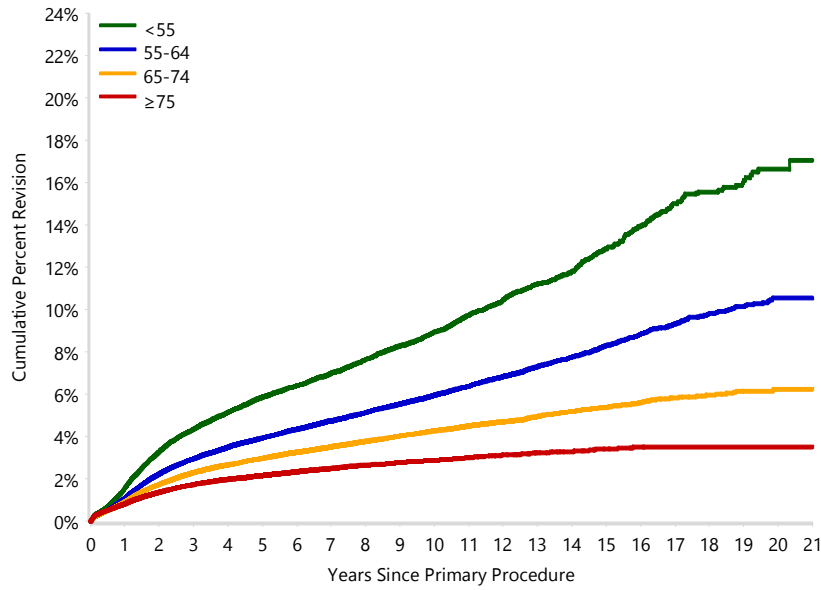


**Figure KT9 Cumulative Percent Revision of Primary Total Knee Replacement by Age (Primary Diagnosis OA)**



HR - adjusted for gender

<55 vs ≥75

0 - 6Mth: HR=1.32 (1.17, 1.50), p<0.001  
 6Mth - 1.5Yr: HR=2.96 (2.70, 3.25), p<0.001  
 1.5Yr - 2Yr: HR=3.44 (2.96, 4.01), p<0.001  
 2Yr - 3.5Yr: HR=3.16 (2.85, 3.50), p<0.001  
 3.5Yr - 4Yr: HR=3.87 (3.18, 4.70), p<0.001  
 4Yr - 4.5Yr: HR=3.86 (3.13, 4.75), p<0.001  
 4.5Yr - 7.5Yr: HR=3.68 (3.29, 4.12), p<0.001  
 7.5Yr - 8.5Yr: HR=4.92 (4.05, 5.97), p<0.001  
 8.5Yr - 9.5Yr: HR=4.40 (3.49, 5.54), p<0.001  
 9.5Yr+: HR=6.16 (5.47, 6.95), p<0.001

55-64 vs ≥75

0 - 6Mth: HR=0.99 (0.91, 1.09), p=0.895  
 6Mth - 9Mth: HR=1.83 (1.63, 2.07), p<0.001  
 9Mth - 1.5Yr: HR=1.98 (1.83, 2.15), p<0.001  
 1.5Yr - 2Yr: HR=2.24 (1.98, 2.54), p<0.001  
 2Yr - 2.5Yr: HR=2.04 (1.84, 2.27), p<0.001  
 2.5Yr - 3.5Yr: HR=2.14 (1.95, 2.35), p<0.001  
 3.5Yr - 4.5Yr: HR=2.45 (2.20, 2.74), p<0.001  
 4.5Yr - 8Yr: HR=2.46 (2.26, 2.66), p<0.001  
 8Yr+: HR=3.28 (3.00, 3.59), p<0.001

65-74 vs ≥75

0 - 6Mth: HR=0.95 (0.87, 1.03), p=0.194  
 6Mth - 1.5Yr: HR=1.44 (1.34, 1.55), p<0.001  
 1.5Yr - 2Yr: HR=1.58 (1.40, 1.79), p<0.001  
 2Yr+: HR=1.62 (1.54, 1.72), p<0.001

Number at Risk	0 Yr	1 Yr	3 Yrs	5 Yrs	10 Yrs	15 Yrs	20 Yrs
<55	46794	42232	34198	26992	12360	3831	312
55-64	190748	173006	140178	109589	48427	13690	1000
65-74	285504	257819	206208	157554	64451	16921	1041
≥75	188932	170311	135168	100666	34371	5937	211

Note: Restricted to modern prostheses