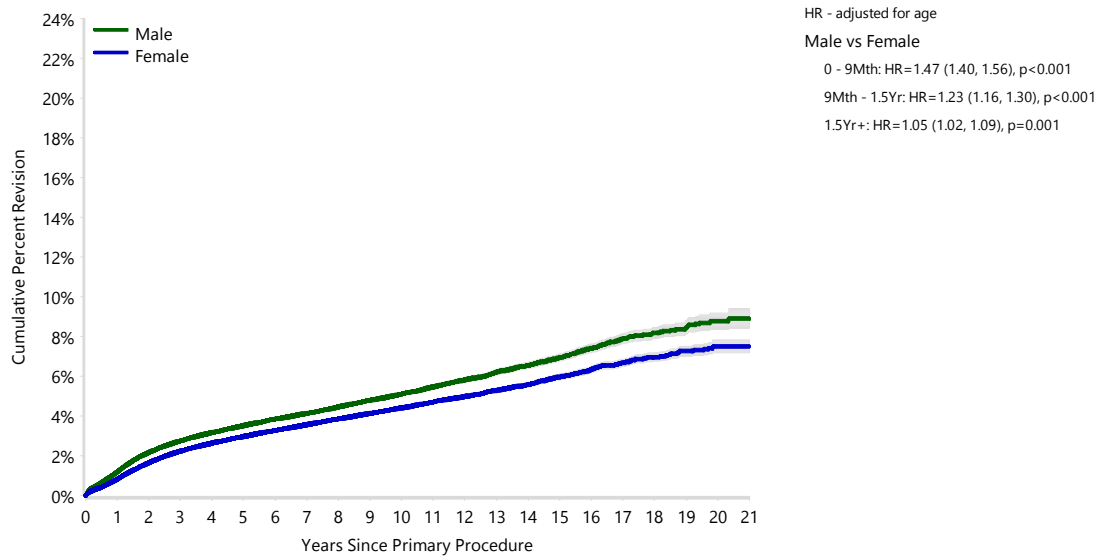


Figure KT10 Cumulative Percent Revision of Primary Total Knee Replacement by Gender (Primary Diagnosis OA)



Number at Risk	0 Yr	1 Yr	3 Yrs	5 Yrs	10 Yrs	15 Yrs	20 Yrs
Male	316008	283507	223871	168968	66108	15949	1000
Female	395970	359861	291881	225833	93501	24430	1564

Note: Restricted to modern prostheses