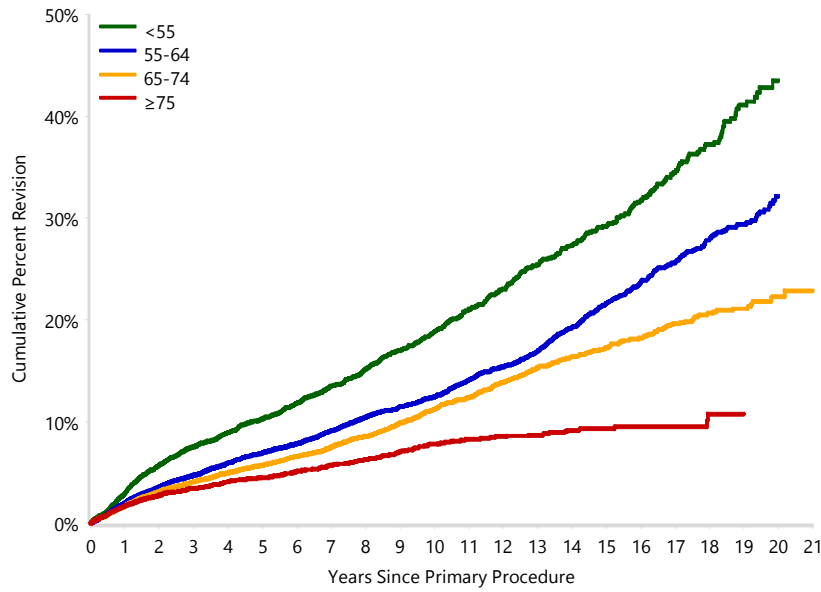


Figure KP8 Cumulative Percent Revision of Primary Unicompartmental Knee Replacement by Age (Primary Diagnosis OA)



HR - adjusted for gender

<55 vs ≥75

0 - 6Mth: HR=1.70 (1.29, 2.24), p<0.001
 6Mth - 3Yr: HR=2.46 (2.11, 2.88), p<0.001
 3Yr - 7Yr: HR=2.42 (2.00, 2.93), p<0.001
 7Yr - 12Yr: HR=3.58 (2.72, 4.71), p<0.001
 12Yr - 12.5Yr: HR=22.40 (8.62, 58.20), p<0.001
 12.5Yr - 14Yr: HR=8.85 (4.29, 18.26), p<0.001
 14Yr+: HR=11.38 (5.74, 22.55), p<0.001

55-64 vs ≥75

0 - 1.5Yr: HR=1.37 (1.18, 1.60), p<0.001
 1.5Yr - 2Yr: HR=1.46 (1.11, 1.92), p=0.007
 2Yr - 7Yr: HR=1.72 (1.49, 2.00), p<0.001
 7Yr - 11Yr: HR=2.26 (1.73, 2.94), p<0.001
 11Yr - 11.5Yr: HR=2.85 (1.74, 4.65), p<0.001
 11.5Yr - 12Yr: HR=1.69 (0.97, 2.94), p=0.064
 12Yr - 13Yr: HR=8.78 (3.73, 20.68), p<0.001
 13Yr - 13.5Yr: HR=11.60 (5.26, 25.55), p<0.001
 13.5Yr+: HR=8.53 (4.40, 16.53), p<0.001

65-74 vs ≥75

0 - 4Yr: HR=1.24 (1.09, 1.42), p<0.001
 4Yr - 5.5Yr: HR=1.43 (1.11, 1.85), p=0.006
 5.5Yr - 7Yr: HR=1.33 (1.02, 1.72), p=0.034
 7Yr - 7.5Yr: HR=2.50 (1.61, 3.88), p<0.001
 7.5Yr - 12Yr: HR=2.21 (1.69, 2.89), p<0.001
 12Yr - 13Yr: HR=8.15 (3.43, 19.37), p<0.001
 13Yr+: HR=3.90 (2.00, 7.63), p<0.001

| Number at Risk | 0 Yr | 1 Yr | 3 Yrs | 5 Yrs | 10 Yrs | 15 Yrs | 20 Yrs |
|----------------|-------|-------|-------|-------|--------|--------|--------|
| <55 | 5907 | 5311 | 4179 | 3198 | 1666 | 654 | 75 |
| 55-64 | 14930 | 13542 | 10965 | 8463 | 4586 | 1758 | 178 |
| 65-74 | 15903 | 14368 | 11245 | 8313 | 4188 | 1542 | 159 |
| ≥75 | 8683 | 7745 | 6005 | 4356 | 1918 | 495 | 19 |

Note: Restricted to modern prostheses