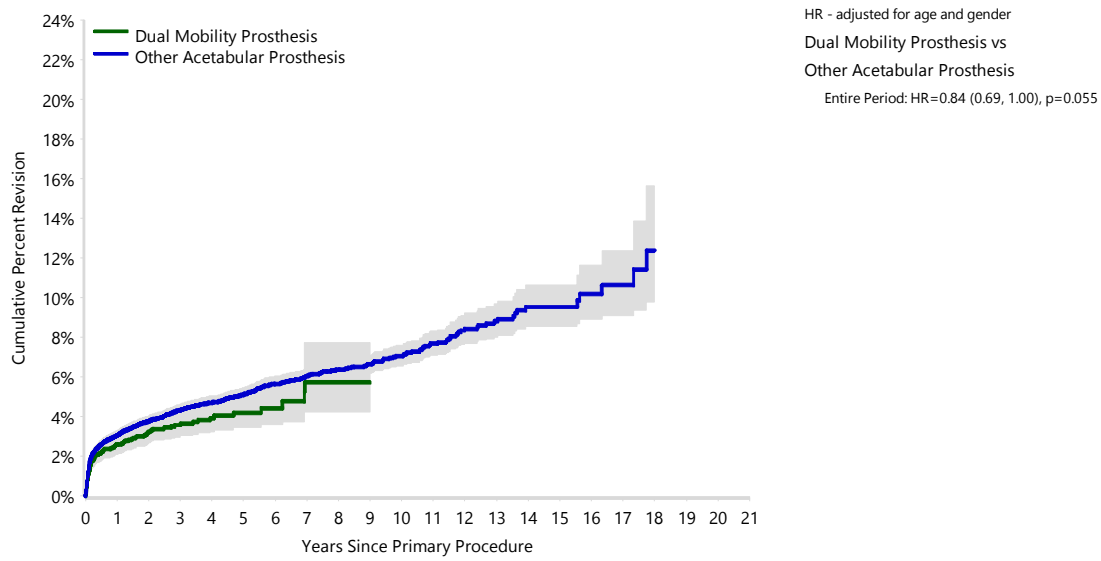


Figure HT88 Cumulative Percent Revision of Primary Total Conventional Hip Replacement by Acetabular Mobility (Primary Diagnosis Fractured NOF)



| Number at Risk | 0 Yr | 1 Yr | 2 Yrs | 3 Yrs | 5 Yrs | 7 Yrs | 10 Yrs |
|-----------------------------|-------|-------|-------|-------|-------|-------|--------|
| Dual Mobility Prosthesis | 4128 | 2841 | 2013 | 1352 | 548 | 189 | 27 |
| Other Acetabular Prosthesis | 20673 | 17281 | 14803 | 12395 | 8142 | 5053 | 2259 |

Note: All procedures using metal/metal prostheses have been excluded
 Restricted to modern prostheses