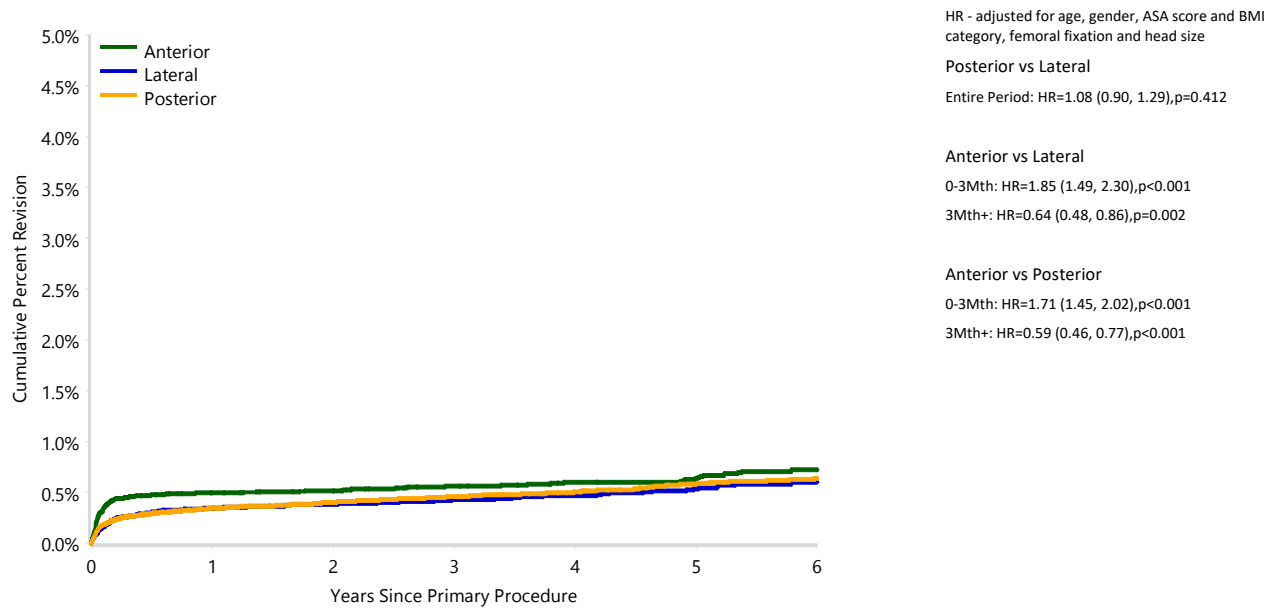


**Figure HT68 Cumulative Incidence Revision Diagnosis of Primary Total Conventional Hip Replacement by Surgical Approach (Primary Diagnosis OA, Revision for Fracture)**



Number at Risk	0 Yr	1 Yr	2 Yrs	3 Yrs	4 Yrs	5 Yrs	6 Yrs
Anterior	60905	48608	38434	28504	19407	11558	4929
Lateral	32663	28154	24010	19426	14623	9663	4483
Posterior	118017	94816	75079	55312	37899	22454	9710

Note: All procedures using metal/metal prostheses have been excluded  
 Excludes procedures with unknown ASA score, BMI category or head size  
 Due to low numbers, ASA scores 1-2 and 3-5 have been combined  
 Due to low numbers, BMI categories underweight and normal have been combined  
 Restricted to modern prostheses