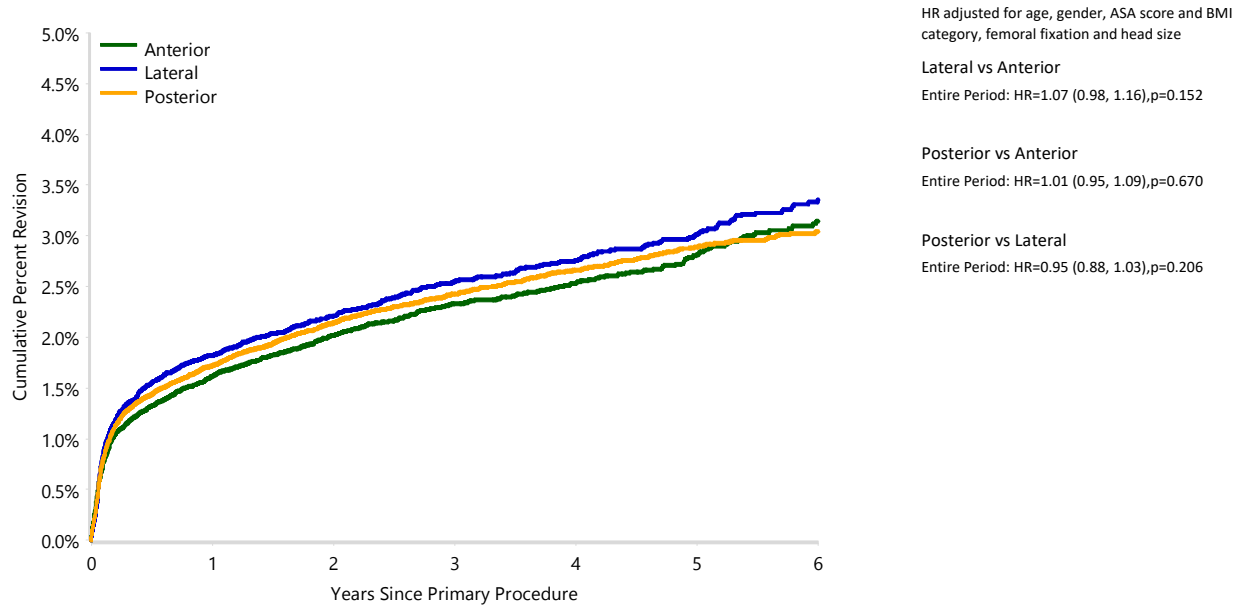


Figure HT64 Cumulative Percent Revision of Primary Total Conventional Hip Replacement by Surgical Approach (Primary Diagnosis OA)



| Number at Risk | 0 Yr | 1 Yr | 2 Yrs | 3 Yrs | 4 Yrs | 5 Yrs | 6 Yrs |
|----------------|--------|-------|-------|-------|-------|-------|-------|
| Anterior | 60905 | 48608 | 38434 | 28504 | 19407 | 11558 | 4929 |
| Lateral | 32663 | 28154 | 24010 | 19426 | 14623 | 9663 | 4483 |
| Posterior | 118017 | 94816 | 75079 | 55312 | 37899 | 22454 | 9710 |

Note: All procedures using metal/metal prostheses have been excluded
 Excludes procedures with unknown ASA score, BMI category or head size
 Due to low numbers, ASA score 1-2 and 3-5 have been combined
 Due to low numbers BMI category underweight and normal have been combined
 Restricted to modern prostheses

