

Rotaglide Plus/Rotaglide Plus Total Knee Investigation

Note: This analysis compares the Rotaglide Plus/Rotaglide Plus femoral/tibial combination with all other total knee prostheses.

This combination has been identified as having a significantly higher rate of revision. For a detailed explanation of the process used by the Registry that results in identification of prostheses that have a higher than anticipated rate of revision please refer to the Prostheses with Higher than Anticipated Rates of Revision chapter of the most recent AOANJRR Annual Report, <https://aoanjrr.sahmri.com/annual-reports-2022>.

Note: Procedures using prostheses with no recorded use in 2021 are excluded from the comparator.

TABLE 1

Revision Rate of Primary Total Knee Replacement

The revision rate of the Rotaglide Plus/Rotaglide Plus total knee combination is compared to all other total knee prostheses.

Table 1: Revision Rates of Primary Total Knee Replacement

Component	N Revised	N Total	Obs. Years	Revisions/100 Obs. Yrs (95% CI)
Rotaglide Plus/Rotaglide Plus	83	631	7743	1.07 (0.85, 1.33)
Other Total Knee	26061	727695	4729125	0.55 (0.54, 0.56)
TOTAL	26144	728326	4736868	0.55 (0.55, 0.56)

Note: Prostheses no longer used in 2021 are excluded from the comparator.

TABLE 2

Yearly Cumulative Percent Revision of Primary Total Knee Replacement

The yearly cumulative percent revision of the Rotaglide Plus/Rotaglide Plus total knee combination is compared to all other total knee prostheses.

Table 2: Yearly Cumulative Percent Revision of Primary Total Knee Replacement

CPR	1 Yr	2 Yrs	3 Yrs	4 Yrs	5 Yrs	6 Yrs	7 Yrs
Rotaglide Plus/Rotaglide Plus	0.8 (0.3, 1.9)	3.2 (2.1, 5.0)	4.1 (2.8, 6.0)	5.8 (4.2, 8.0)	5.8 (4.2, 8.0)	7.2 (5.4, 9.6)	7.8 (5.9, 10.2)
Other Total Knee	1.0 (1.0, 1.0)	1.9 (1.9, 1.9)	2.5 (2.4, 2.5)	2.9 (2.9, 2.9)	3.2 (3.2, 3.3)	3.6 (3.5, 3.6)	3.9 (3.8, 3.9)

CPR	8 Yrs	9 Yrs	10 Yrs	11 Yrs	12 Yrs	13 Yrs	14 Yrs
Rotaglide Plus/Rotaglide Plus	8.9 (6.9, 11.5)	10.3 (8.0, 13.1)	11.1 (8.8, 14.0)	11.3 (9.0, 14.3)	12.3 (9.8, 15.4)	13.1 (10.5, 16.2)	14.7 (11.9, 18.1)
Other Total Knee	4.2 (4.1, 4.2)	4.5 (4.4, 4.5)	4.8 (4.7, 4.8)	5.1 (5.0, 5.2)	5.4 (5.3, 5.5)	5.7 (5.7, 5.8)	6.1 (6.0, 6.1)

CPR	15 Yrs	16 Yrs	17 Yrs	18 Yrs	19 Yrs	20 Yrs	21 Yrs
Rotaglide Plus/Rotaglide Plus	15.3 (12.4, 18.8)	15.6 (12.7, 19.2)	16.0 (13.0, 19.7)	16.5 (13.4, 20.3)	17.3 (13.9, 21.4)		
Other Total Knee	6.4 (6.3, 6.6)	6.9 (6.7, 7.0)	7.3 (7.1, 7.4)	7.6 (7.4, 7.8)	7.9 (7.7, 8.1)	8.2 (7.9, 8.4)	8.2 (8.0, 8.5)

Note: Prostheses no longer used in 2021 are excluded from the comparator.

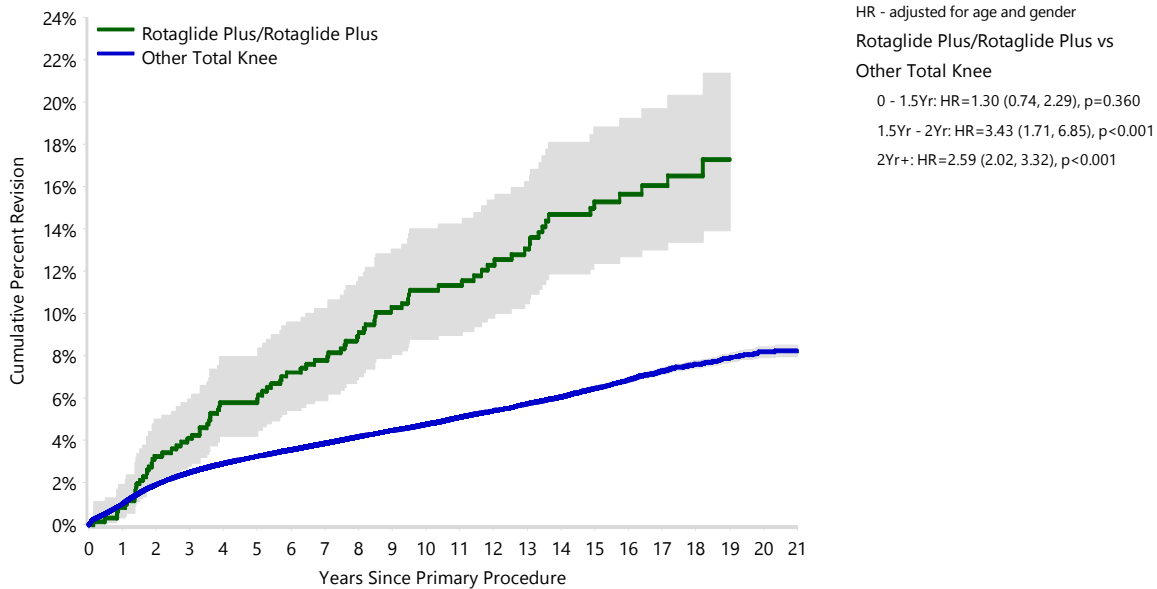
FIGURE 1

Yearly Cumulative Percent Revision of Primary Total Knee Replacement

The yearly cumulative percent revision of the Rotaglide Plus/Rotaglide Plus total knee combination is compared to all other total knee prostheses. In addition, hazard ratios are reported.

Hazard ratios are reported for specific time periods during which the hazard ratio is constant. This is done to enable more specific and valid comparisons of the risk of revision over time. The pattern of variation in risk has important implications with respect to the underlying reasons for any difference.

Figure 1: Cumulative Percent Revision of Primary Total Knee Replacement



Number at Risk	0 Yr	1 Yr	2 Yrs	3 Yrs	4 Yrs	5 Yrs	6 Yrs	7 Yrs	8 Yrs	9 Yrs	10 Yrs
Rotaglide Plus/Rotaglide Plus	631	612	589	570	549	533	511	494	476	444	416
Other Total Knee	727695	657528	592760	527219	464041	403691	347132	293768	245752	202649	163502

Number at Risk	11 Yrs	12 Yrs	13 Yrs	14 Yrs	15 Yrs	16 Yrs	17 Yrs	18 Yrs	19 Yrs	20 Yrs	21 Yrs
Rotaglide Plus/Rotaglide Plus	380	352	335	298	268	227	183	124	60	17	0
Other Total Knee	128843	99109	75527	56481	41660	29601	19593	11953	6490	2687	605

Note: Prostheses no longer used in 2021 are excluded from the comparator.

TABLE 3**Primary Diagnosis for Revised Primary Total Knee Replacement**

This table identifies the diagnosis of the primary procedure which was subsequently revised. This information is provided as there is a variation on outcome depending on the primary diagnosis. It is therefore important when considering the reasons for a higher than anticipated rate of revision that there is identification of the primary diagnosis. This information should be compared to the primary diagnosis for the revisions of all other total knee prostheses.

Table 3: Primary Diagnosis for Revised Primary Total Knee Replacement

Primary Diagnosis	Rotaglide Plus/Rotaglide Plus		Other Total Knee	
	Number	Percent	Number	Percent
Osteoarthritis	81	97.6	25251	96.9
Rheumatoid Arthritis	2	2.4	331	1.3
Other Inflammatory Arthritis			161	0.6
Tumour			151	0.6
Osteonecrosis			98	0.4
Fracture			49	0.2
Other			19	0.1
Chondrocalcinosis			1	0.0
TOTAL	83	100.0	26061	100.0

Note: Prostheses no longer used in 2021 are excluded from the comparator.

TABLE 4

Reasons for Revision

This is reported in two ways: a percentage of primary procedures revised and as a percentage of all revision procedures.

% Primaries Revised: This shows the proportional contribution of each revision diagnosis as a percentage of the total number of primary procedures. This percentage can be used to approximate the risk of being revised for that diagnosis. Differing percentages between groups, with the same distribution of follow up time, may identify problems of concern.

% Revisions: The number of revisions for each diagnosis is expressed as a percentage of the total number of revisions. This shows the distribution of reasons for revision within a group but cannot be used as a comparison between groups.

Table 4: Primary Total Knee Replacement - Reason for Revision

Revision Diagnosis	Rotaglide Plus/Rotaglide Plus			Other Total Knee		
	Number	% Primaries Revised	% Revisions	Number	% Primaries Revised	% Revisions
Infection	10	1.6	12.0	6981	1.0	26.8
Loosening	30	4.8	36.1	5841	0.8	22.4
Instability	5	0.8	6.0	2490	0.3	9.6
Pain	5	0.8	6.0	2064	0.3	7.9
Patellofemoral Pain	5	0.8	6.0	2048	0.3	7.9
Patella Erosion	1	0.2	1.2	1693	0.2	6.5
Arthrofibrosis	2	0.3	2.4	997	0.1	3.8
Fracture				944	0.1	3.6
Malalignment	2	0.3	2.4	603	0.1	2.3
Wear Tibial Insert	8	1.3	9.6	364	0.1	1.4
Lysis	6	1.0	7.2	345	0.0	1.3
Incorrect Sizing				259	0.0	1.0
Patella Maltracking	2	0.3	2.4	181	0.0	0.7
Bearing Dislocation				153	0.0	0.6
Implant Breakage Tibial Insert	2	0.3	2.4	150	0.0	0.6
Implant Breakage Patella				134	0.0	0.5
Metal Related Pathology	2	0.3	2.4	117	0.0	0.4
Prosthesis Dislocation	1	0.2	1.2	80	0.0	0.3
Synovitis				78	0.0	0.3
Osteonecrosis				58	0.0	0.2
Implant Breakage Tibial	2	0.3	2.4	42	0.0	0.2
Implant Breakage Femoral				38	0.0	0.1
Wear Patella				33	0.0	0.1
Tumour				28	0.0	0.1
Heterotopic Bone				15	0.0	0.1
Wear Tibial				12	0.0	0.0
Progression Of Disease				6	0.0	0.0
Patella Dislocation				2	0.0	0.0
Wear Femoral				2	0.0	0.0
Incorrect Side				1	0.0	0.0
Other				302	0.0	1.2
N Revision	83	13.2	100.0	26061	3.6	100.0
N Primary	631			727695		

Note: Prostheses no longer used in 2021 are excluded from the comparator.

FIGURE 2

Cumulative Incidence Revision Diagnosis of Primary Total Knee Replacement

This figure details the cumulative incidence of the most common reasons for revision. The five most common reasons for revision are included as long as each of these reasons account for more than 10 procedures or at least 5% of all revisions for the Rotaglide Plus/Rotaglide Plus total knee combination. A comparative graph is provided of the cumulative incidence for the same reasons for revisions for all other total knee prostheses.

Figure 2: Cumulative Incidence Revision Diagnosis for Primary Total Knee Replacement

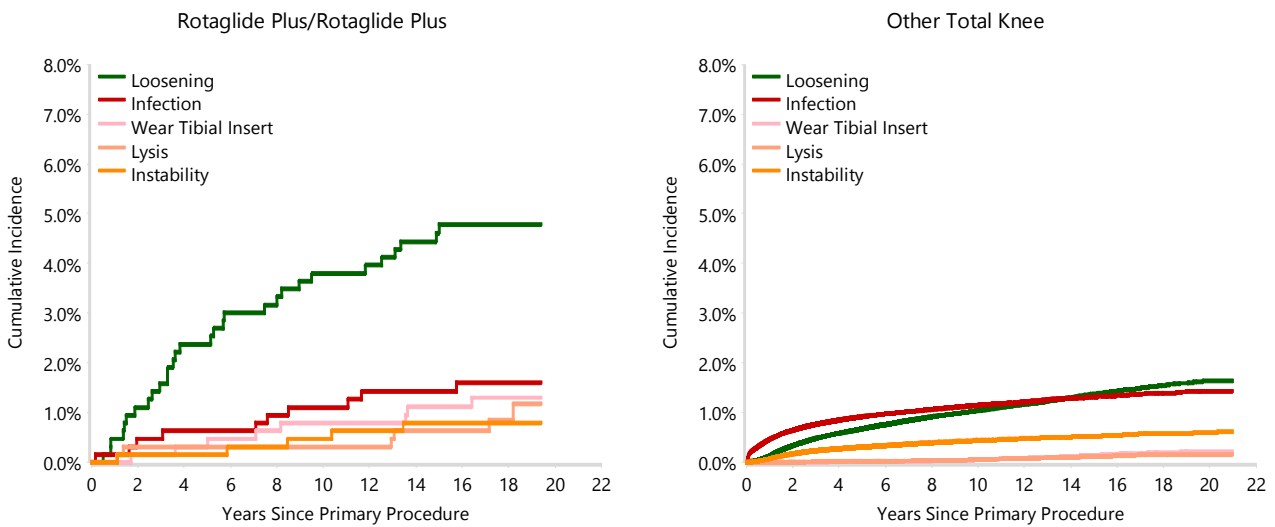


TABLE 5

Type of Revision Performed for Primary Total Knee Replacement

This analysis identifies the components used in the revision of the Rotaglide Plus/Rotaglide Plus total knee combination and compares it to the components used in the revision of all other total knee prostheses.

The reason this analysis is undertaken is to identify whether there is one or more components which are being replaced that differ from the components replaced for revisions of all other total knee prostheses i.e. is there a difference in the type of revision undertaken for the Rotaglide Plus/Rotaglide Plus total knee combination compared to all other total knee prostheses.

Table 5: Primary Total Knee Replacement - Type of Revision

Type of Revision	Rotaglide Plus/Rotaglide Plus		Other Total Knee	
	Number	Percent	Number	Percent
TKR (Tibial/Femoral)	38	45.8	6419	24.6
Tibial Component	5	6.0	2100	8.1
Cement Spacer	3	3.6	1360	5.2
Femoral Component	1	1.2	1311	5.0
Removal of Prostheses			150	0.6
Total Femoral			21	0.1
Reinsertion of Components			11	0.0
N Major	47	56.6	11372	43.6
Insert Only	23	27.7	7123	27.3
Patella Only	8	9.6	4783	18.4
Insert/Patella	5	6.0	2710	10.4
Minor Components			59	0.2
Cement Only			14	0.1
N Minor	36	43.4	14689	56.4
TOTAL	83	100.0	26061	100.0

Note: Prostheses no longer used in 2021 are excluded from the comparator.

TABLE 6**Revision Rates of Rotaglide Plus/Rotaglide Plus Primary Total Knee Replacement by Fixation**

This analysis is provided as some prostheses have more than one fixation option. Additionally there are prostheses where an alternative to the recommended approach to fixation was used e.g. a cementless prosthesis that has been cemented or vice-versa.

Table 6: Revised Number of Rotaglide Plus/Rotaglide Plus Primary Total Knee Replacement by Fixation

Fixation	N Revised	N Total
Cemented	10	89
Cementless	34	364
Hybrid (Tibial Cemented)	38	174
Hybrid (Tibial Cementless)	1	4
TOTAL	83	631

TABLE 7**Revision Rates of Rotaglide Plus/Rotaglide Plus Primary Total Knee Replacement by Bearing Surface**

This analysis is provided as some prostheses are combined with a variety of bearing surfaces. All bearing surfaces used with this combination are listed.

Table 7: Revised Number of Rotaglide Plus/Rotaglide Plus Primary Total Knee Replacement by Bearing Surface

Bearing Surface	N Revised	N Total
Non XLPE	83	631
TOTAL	83	631

TABLE 8**Revision Rates of Rotaglide Plus/Rotaglide Plus Primary Total Knee Replacement by Bearing Mobility**

This analysis is provided as some prostheses are combined with a variety of bearing mobilities. All bearing mobilities used with this combination are listed.

Table 8: Revised Number of Rotaglide Plus/Rotaglide Plus Primary Total Knee Replacement by Bearing Mobility

Bearing Mobility	N Revised	N Total
Fixed	3	34
Rotating - Sliding	80	597
TOTAL	83	631

TABLE 9**Revision Rates of Rotaglide Plus/Rotaglide Plus Primary Total Knee Replacement by Stability**

This analysis is provided as some prostheses are combined with a variety of stabilities. All stabilities used with this combination are listed.

Table 9: Revised Number of Rotaglide Plus/Rotaglide Plus Primary Total Knee Replacement by Stability

Stability	N Revised	N Total
Minimally Stabilised	83	631
TOTAL	83	631

TABLE 10

Revision Rates of Primary Total Knee Replacement by State

This enables a state by state variation to be identified for the Rotaglide Plus/Rotaglide Plus total knee combination and provides the comparative data for each of the states for all other total knee prostheses.

The purpose of this analysis is to determine if the higher than anticipated rate of revision has widespread distribution between states. If there is widespread distribution then the reason for the higher than anticipated rate of revision is unlikely to be surgeon specific. If the prosthesis has been used in only a small number of states it is not possible to distinguish if the higher than anticipated rate of revision is related to the prosthesis, surgeon, technique or patient.

Table 10: Revised Number of Primary Total Knee Replacement by State

Component	State	N Revised	N Total
Rotaglide Plus/Rotaglide Plus	NSW	83	631
Other Total Knee	NSW	7722	253121
	VIC	5553	144487
	QLD	5690	153171
	WA	3235	77905
	SA	2837	63440
	TAS	418	16885
	ACT/NT	606	18686
TOTAL		26144	728326

Note: Prostheses no longer used in 2021 are excluded from the comparator.

TABLE 11**Number of Revisions of Rotaglide Plus/Rotaglide Plus Primary Total Knee Replacement by Year of Implant**

This analysis details the number of prostheses reported each year to the Registry for the Rotaglide Plus/Rotaglide Plus total knee combination. It also provides the subsequent number of revisions of the primaries reported in that year.

Primary procedures performed in later years have had less follow up time therefore the number revised is expected to be less than the number revised in earlier years. For example, a primary procedure performed in 2021 has a maximum of one year to be revised, whereas a primary procedure performed in 2019 has a maximum of three years to be revised.

Table 11: Number of Revisions of Rotaglide Plus/Rotaglide Plus Primary Total Knee Replacement by Year of Implant

Year of Implant	Number Revised	Total Number
2001	6	56
2002	17	125
2003	22	151
2004	10	110
2005	16	101
2006	9	43
2007	2	30
2008	1	15
TOTAL	83	631

TABLE 12

Revision Rates of Rotaglide Plus/Rotaglide Plus Primary Total Knee Replacement by Catalogue Number Range

Many prostheses have a number of catalogue ranges. The catalogue range is specific to particular design features; more than one catalogue range usually indicates a minor difference in design in a particular Rotaglide Plus/Rotaglide Plus prosthesis.

This analysis has been undertaken to determine if the revision rate varies according to the catalogue number range.

Model	Catalogue Range	Catalogue Description	Cement	Coating	Fixation
Femoral					
Rotaglide Plus	102410-102424	COCR LATCHED SURFACE RIGHT	YES		
Rotaglide Plus	A102410B-A102414B	COCR LATCHED SURFACE TIALLOY POROUS COAT + HAP LEFT	NO	HA COATED	POROUS
Rotaglide Plus	A102420B-A102424B	COCR LATCHED SURFACE TIALLOY POROUS COAT + HAP RIGHT	NO	HA COATED	POROUS
Tibial					
Rotaglide Plus	102100-102104	COCR LATCHED SURFACE BASE PLATE	YES		
Rotaglide Plus	102100B-102104B	COCR LATCHED SURFACE TIALLOY POROUS COAT + HAP	NO		POROUS

Table 12: Revised Number of Rotaglide Plus/Rotaglide Plus Primary Total Knee Replacement by Catalogue Number Range

Femoral Range	Tibial Range	N Revised	N Total
102410-102424	102100-102104	10	86
	102100B-102104B	1	4
A102410B-A102414B	102100-102104	21	85
	102100B-102104B	15	165
A102420B-A102424B	102100-102104	17	91
	102100B-102104B	19	200
TOTAL		83	631