

Secur-Fit Plus/Secur-Fit Total Conventional Hip Investigation

Note: This analysis compares the Secur-Fit Plus/Secur-Fit femoral stem/acetabular combination with all other total conventional hip prostheses.

This combination has been identified as having a significantly higher rate of revision. For a detailed explanation of the process used by the Registry that results in identification of prostheses that have a higher than anticipated rate of revision please refer to the Prostheses with Higher than Anticipated Rates of Revision chapter of the most recent AOANJRR Annual Report, <https://aoanjrr.sahmri.com/annual-reports-2022>.

Note: Procedures using metal/metal prostheses with head size larger than 32mm are excluded from the comparator. Procedures using prostheses with no recorded use in 2021 are excluded from the comparator.

TABLE 1

Revision Rate of Primary Total Conventional Hip Replacement

The revision rate of the Secur-Fit Plus/Secur-Fit total conventional hip combination is compared to all other total conventional hip prostheses.

Table 1: Revision Rates of Primary Total Conventional Hip Replacement

Component	N Revised	N Total	Obs. Years	Revisions/100 Obs. Yrs (95% CI)
Secur-Fit Plus/Secur-Fit	30	197	2597	1.16 (0.78, 1.65)
Other Total Conventional Hip	15859	453455	2721137	0.58 (0.57, 0.59)
TOTAL	15889	453652	2723734	0.58 (0.57, 0.59)

Note: Prostheses no longer used in 2021 are excluded from the comparator. Procedures using metal/metal prostheses with head size larger than 32mm are excluded from the comparator.

TABLE 2

Yearly Cumulative Percent Revision of Primary Total Conventional Hip Replacement

The yearly cumulative percent revision of the Secur-Fit Plus/Secur-Fit total conventional hip combination is compared to all other total conventional hip prostheses.

Table 2: Yearly Cumulative Percent Revision of Primary Total Conventional Hip Replacement

CPR	1 Yr	2 Yrs	3 Yrs	4 Yrs	5 Yrs	6 Yrs	7 Yrs
Secur-Fit Plus/Secur-Fit	3.1 (1.4, 6.7)	6.2 (3.6, 10.7)	7.3 (4.4, 11.9)	7.8 (4.8, 12.6)	7.8 (4.8, 12.6)	8.9 (5.6, 14.0)	9.5 (6.1, 14.6)
Other Total Conventional Hip	1.7 (1.7, 1.8)	2.2 (2.2, 2.2)	2.5 (2.5, 2.6)	2.8 (2.8, 2.9)	3.1 (3.0, 3.2)	3.4 (3.3, 3.5)	3.7 (3.6, 3.7)

CPR	8 Yrs	9 Yrs	10 Yrs	11 Yrs	12 Yrs	13 Yrs	14 Yrs
Secur-Fit Plus/Secur-Fit	10.1 (6.5, 15.3)	10.1 (6.5, 15.3)	10.1 (6.5, 15.3)	10.7 (7.0, 16.1)	11.4 (7.6, 17.0)	14.3 (9.8, 20.5)	14.3 (9.8, 20.5)
Other Total Conventional Hip	4.0 (3.9, 4.0)	4.3 (4.2, 4.4)	4.6 (4.6, 4.7)	5.0 (4.9, 5.1)	5.4 (5.3, 5.5)	5.8 (5.7, 5.9)	6.3 (6.1, 6.4)

CPR	15 Yrs	16 Yrs	17 Yrs	18 Yrs	19 Yrs	20 Yrs	21 Yrs
Secur-Fit Plus/Secur-Fit	15.8 (11.0, 22.3)	16.7 (11.8, 23.5)	17.9 (12.6, 25.0)	19.2 (13.6, 26.8)	19.2 (13.6, 26.8)		
Other Total Conventional Hip	6.7 (6.5, 6.8)	7.1 (6.9, 7.3)	7.5 (7.3, 7.7)	7.9 (7.6, 8.1)	8.6 (8.3, 8.9)	8.9 (8.5, 9.3)	9.8 (9.0, 10.8)

Note: Prostheses no longer used in 2021 are excluded from the comparator. Procedures using metal/metal prostheses with head size larger than 32mm are excluded from the comparator.

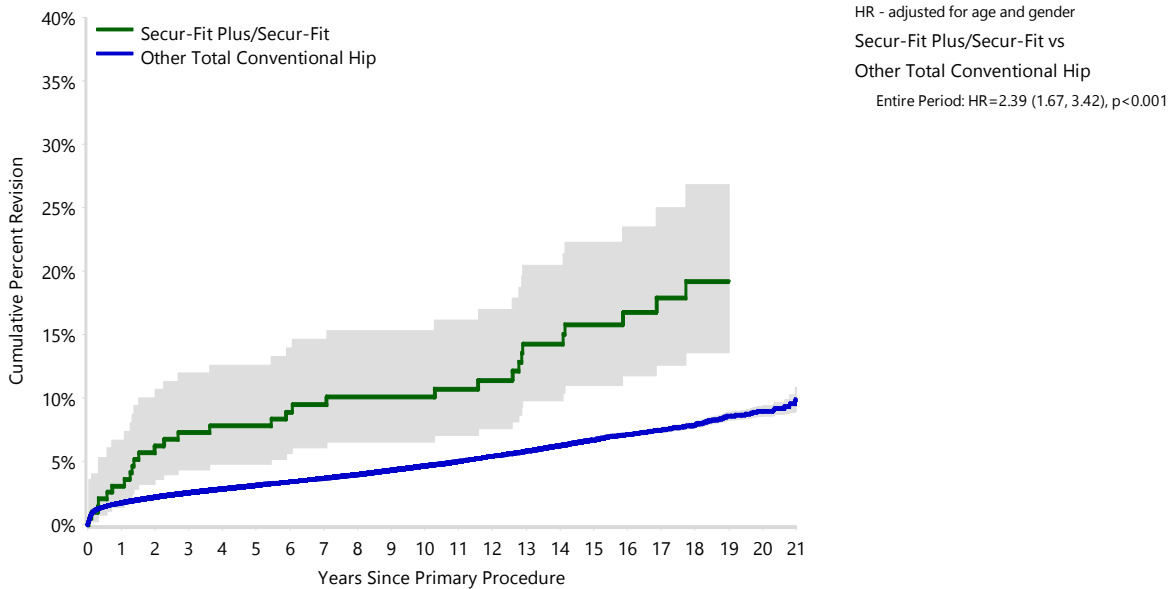
FIGURE 1

Yearly Cumulative Percent Revision of Primary Total Conventional Hip Replacement

The yearly cumulative percent revision of the Secur-Fit Plus/Secur-Fit total conventional hip combination is compared to all other total conventional hip prostheses. In addition, hazard ratios are reported.

Hazard ratios are reported for specific time periods during which the hazard ratio is constant. This is done to enable more specific and valid comparisons of the risk of revision over time. The pattern of variation in risk has important implications with respect to the underlying reasons for any difference.

Figure 1: Cumulative Percent Revision of Primary Total Conventional Hip Replacement



Number at Risk	0 Yr	1 Yr	2 Yrs	3 Yrs	4 Yrs	5 Yrs	6 Yrs	7 Yrs	8 Yrs	9 Yrs	10 Yrs
Secur-Fit Plus/Secur-Fit	197	187	179	174	169	167	162	153	148	143	139
Other Total Conventional Hip	453455	398683	354053	309177	267205	228060	191587	158583	131210	108026	88155

Number at Risk	11 Yrs	12 Yrs	13 Yrs	14 Yrs	15 Yrs	16 Yrs	17 Yrs	18 Yrs	19 Yrs	20 Yrs	21 Yrs
Secur-Fit Plus/Secur-Fit	135	128	119	113	104	85	68	59	47	21	1
Other Total Conventional Hip	70603	55343	42208	31909	24032	17719	12212	7611	4006	1573	276

Note: Prostheses no longer used in 2021 are excluded from the comparator. Procedures using metal/metal prostheses with head size larger than 32mm are excluded from the comparator.

TABLE 3**Primary Diagnosis for Revised Primary Total Conventional Hip Replacement**

This table identifies the diagnosis of the primary procedure which was subsequently revised. This information is provided as there is a variation on outcome depending on the primary diagnosis. It is therefore important when considering the reasons for a higher than anticipated rate of revision that there is identification of the primary diagnosis. This information should be compared to the primary diagnosis for the revisions of all other total conventional hip prostheses.

Table 3: Primary Diagnosis for Revised Primary Total Conventional Hip Replacement

Primary Diagnosis	Secur-Fit Plus/Secur-Fit		Other Total Conventional Hip	
	Number	Percent	Number	Percent
Osteoarthritis	27	90.0	13112	82.7
Fractured Neck Of Femur			1164	7.3
Osteonecrosis	3	10.0	718	4.5
Developmental Dysplasia			247	1.6
Rheumatoid Arthritis			173	1.1
Failed Internal Fixation			140	0.9
Tumour			137	0.9
Other Inflammatory Arthritis			91	0.6
Fracture/Dislocation			47	0.3
Arthrodesis Takedown			16	0.1
Other			14	0.1
TOTAL	30	100.0	15859	100.0

Note: Prostheses no longer used in 2021 are excluded from the comparator. Procedures using metal/metal prostheses with head size larger than 32mm are excluded from the comparator.

TABLE 4

Reasons for Revision

This is reported in two ways: a percentage of primary procedures revised and as a percentage of all revision procedures.

% Primaries Revised: This shows the proportional contribution of each revision diagnosis as a percentage of the total number of primary procedures. This percentage can be used to approximate the risk of being revised for that diagnosis. Differing percentages between groups, with the same distribution of follow up time, may identify problems of concern.

% Revisions: The number of revisions for each diagnosis is expressed as a percentage of the total number of revisions. This shows the distribution of reasons for revision within a group but cannot be used as a comparison between groups.

Table 4: Primary Total Conventional Hip Replacement - Reason for Revision

Revision Diagnosis	Secur-Fit Plus/Secur-Fit			Other Total Conventional Hip		
	Number	% Primaries Revised	% Revisions	Number	% Primaries Revised	% Revisions
Prosthesis Dislocation/Instability	11	5.6	36.7	3717	0.8	23.4
Infection	4	2.0	13.3	3552	0.8	22.4
Fracture	4	2.0	13.3	3440	0.8	21.7
Loosening	7	3.6	23.3	3229	0.7	20.4
Pain				287	0.1	1.8
Leg Length Discrepancy				260	0.1	1.6
Malposition				226	0.0	1.4
Lysis	1	0.5	3.3	184	0.0	1.2
Implant Breakage Stem				151	0.0	1.0
Implant Breakage Acetabular Insert				114	0.0	0.7
Incorrect Sizing				95	0.0	0.6
Wear Acetabular Insert	1	0.5	3.3	91	0.0	0.6
Metal Related Pathology				70	0.0	0.4
Implant Breakage Acetabular	1	0.5	3.3	67	0.0	0.4
Wear Head				45	0.0	0.3
Tumour				37	0.0	0.2
Implant Breakage Head				30	0.0	0.2
Heterotopic Bone				23	0.0	0.1
Wear Acetabulum				9	0.0	0.1
Progression Of Disease				2	0.0	0.0
Osteonecrosis				1	0.0	0.0
Synovitis				1	0.0	0.0
Other	1	0.5	3.3	228	0.1	1.4
N Revision	30	15.2	100.0	15859	3.5	100.0
N Primary	197			453455		

Note: Prostheses no longer used in 2021 are excluded from the comparator. Procedures using metal/metal prostheses with head size larger than 32mm are excluded from the comparator.

FIGURE 2

Cumulative Incidence Revision Diagnosis of Primary Total Conventional Hip Replacement

This figure details the cumulative incidence of the most common reasons for revision. The five most common reasons for revision are included as long as each of these reasons account for more than 10 procedures or at least 5% of all revisions for the Secur-Fit Plus/Secur-Fit total conventional hip combination. A comparative graph is provided of the cumulative incidence for the same reasons for revisions for all other total conventional hip prostheses.

Figure 2: Cumulative Incidence Revision Diagnosis for Primary Total Conventional Hip Replacement

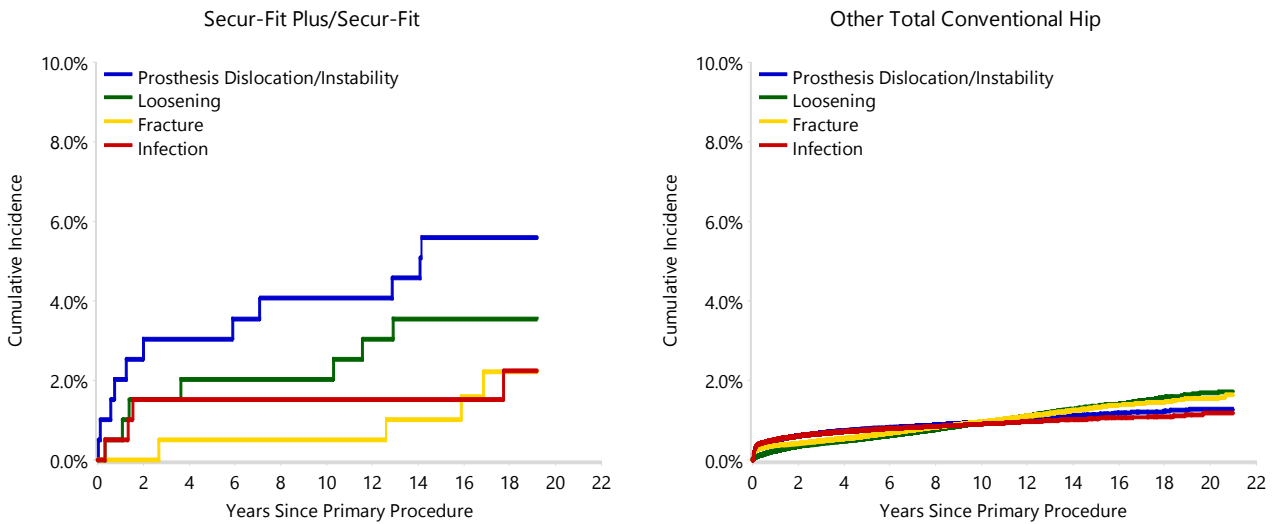


TABLE 5

Type of Revision Performed for Primary Total Conventional Hip Replacement

This analysis identifies the components used in the revision of the Secur-Fit Plus/Secur-Fit total conventional hip combination and compares it to the components used in the revision of all other total conventional hip prostheses.

The reason this analysis is undertaken is to identify whether there is one or more components which are being replaced that differ from the components replaced for revisions of all other total conventional hip prostheses i.e. is there a difference in the type of revision undertaken for the Secur-Fit Plus/Secur-Fit total conventional hip combination compared to all other total conventional hip prostheses.

Table 5: Primary Total Conventional Hip Replacement - Type of Revision

Type of Revision	Secur-Fit Plus/Secur-Fit		Other Total Conventional Hip	
	Number	Percent	Number	Percent
Femoral Component	4	13.3	5155	32.5
Acetabular Component	10	33.3	3059	19.3
THR (Femoral/Acetabular)	3	10.0	1815	11.4
Cement Spacer	1	3.3	594	3.7
Removal of Prostheses			97	0.6
Reinsertion of Components			25	0.2
Total Femoral			6	0.0
Bipolar Head and Femoral			4	0.0
Saddle			1	0.0
N Major	18	60.0	10756	67.8
Head/Insert	10	33.3	3875	24.4
Head Only	2	6.7	778	4.9
Minor Components			274	1.7
Insert Only			172	1.1
Bipolar Only			2	0.0
Cement Only			1	0.0
Head/Neck			1	0.0
N Minor	12	40.0	5103	32.2
TOTAL	30	100.0	15859	100.0

Note: Prostheses no longer used in 2021 are excluded from the comparator. Procedures using metal/metal prostheses with head size larger than 32mm are excluded from the comparator.

TABLE 6**Revision Rates of Secur-Fit Plus/Secur-Fit Primary Total Conventional Hip Replacement by Fixation**

This analysis is provided as some prostheses have more than one fixation option. Additionally there are prostheses where an alternative to the recommended approach to fixation was used e.g. a cementless prosthesis that has been cemented or vice-versa.

Table 6: Revised Number of Secur-Fit Plus/Secur-Fit Primary Total Conventional Hip Replacement by Fixation

Fixation	N Revised	N Total
Cementless	29	196
Hybrid (Femur Cemented)	1	1
TOTAL	30	197

TABLE 7**Revision Rates of Secur-Fit Plus/Secur-Fit Primary Total Conventional Hip Replacement by Bearing Surface**

This analysis is provided as some prostheses are combined with a variety of bearing surfaces. All bearing surfaces used with this combination are listed.

Table 7: Revised Number of Secur-Fit Plus/Secur-Fit Primary Total Conventional Hip Replacement by Bearing Surface

Bearing Surface	N Revised	N Total
Ceramic/Non XLPE	0	10
Metal/Non XLPE	28	185
Unknown	2	2
TOTAL	30	197

TABLE 8**Revision Rates of Primary Total Conventional Hip Replacement by State**

This enables a state by state variation to be identified for the Secur-Fit Plus/Secur-Fit total conventional hip combination and provides the comparative data for each of the states for all other total conventional hip prostheses.

The purpose of this analysis is to determine if the higher than anticipated rate of revision has widespread distribution between states. If there is widespread distribution then the reason for the higher than anticipated rate of revision is unlikely to be surgeon specific. If the prosthesis has been used in only a small number of states it is not possible to distinguish if the higher than anticipated rate of revision is related to the prosthesis, surgeon, technique or patient.

Table 8: Revised Number of Primary Total Conventional Hip Replacement by State

Component	State	N Revised	N Total
Secur-Fit Plus/Secur-Fit	NSW	7	72
	VIC	19	108
	QLD	2	8
	WA	2	9
Other Total Conventional Hip	NSW	4298	132969
	VIC	3982	116998
	QLD	3146	80122
	WA	2184	53952
	SA	1415	41929
	TAS	372	15098
	ACT/NT	462	12387
TOTAL		15889	453652

Note: Prostheses no longer used in 2021 are excluded from the comparator. Procedures using metal/metal prostheses with head size larger than 32mm are excluded from the comparator.

TABLE 9**Number of Revisions of Secur-Fit Plus/Secur-Fit Primary Total Conventional Hip Replacement by Year of Implant**

This analysis details the number of prostheses reported each year to the Registry for the Secur-Fit Plus/Secur-Fit total conventional hip combination. It also provides the subsequent number of revisions of the primaries reported in that year.

Primary procedures performed in later years have had less follow up time therefore the number revised is expected to be less than the number revised in earlier years. For example, a primary procedure performed in 2021 has a maximum of one year to be revised, whereas a primary procedure performed in 2019 has a maximum of three years to be revised.

Table 9: Number of Revisions of Secur-Fit Plus/Secur-Fit Primary Total Conventional Hip Replacement by Year of Implant

Year of Implant	Number Revised	Total Number
2000	0	1
2001	4	40
2002	8	60
2003	7	27
2004	4	21
2005	5	26
2006	2	22
TOTAL	30	197

TABLE 10

Revision Rates of Secur-Fit Plus/Secur-Fit Primary Total Conventional Hip Replacement by Catalogue Number Range

Many prostheses have a number of catalogue ranges. The catalogue range is specific to particular design features; more than one catalogue range usually indicates a minor difference in design in a particular Secur-Fit Plus/Secur-Fit prosthesis.

This analysis has been undertaken to determine if the revision rate varies according to the catalogue number range.

Model	Catalogue Range	Catalogue Description	Cement	Material	Coating
Femoral Stem					
Secur-Fit Plus	60540509A-60541420S	NECK ANGLE HIP STEM	NO	METAL	HA COATED
Acetabular					
Secur-Fit	20512040-20512072	TITANIUM HA PSL CLUSTER ACETABULAR SHELL	NO	METAL	HA COATED
Secur-Fit	20513040-20513072	TITANIUM HA PSL NO HOLE ACETABULAR SHELL	NO	METAL	HA COATED
Secur-Fit	20532048-20532080	SECURFIT XTRA W DOME HOLES	NO	METAL	

Table 10: Revised Number of Secur-Fit Plus/Secur-Fit Primary Total Conventional Hip Replacement by Catalogue Number Range

Femoral Stem Range	Acetabular Range	N Revised	N Total
60540509A-60541420S	20512040-20512072	23	160
	20513040-20513072	4	26
	20532048-20532080	3	11
TOTAL		30	197