

Plasmacup Total Conventional Hip Investigation

Note: This analysis compares the Plasmacup acetabular prosthesis with all other total conventional hip prostheses.

This prosthesis has been identified as having a significantly higher rate of revision. For a detailed explanation of the process used by the Registry that results in identification of prostheses that have a higher than anticipated rate of revision please refer to the Prostheses with Higher than Anticipated Rates of Revision chapter of the most recent AOANJRR Annual Report, <https://aoanjrr.sahmri.com/annual-reports-2022>.

Note: Procedures using metal/metal prostheses with head size larger than 32mm are excluded from the comparator. Procedures using prostheses with no recorded use in 2021 are excluded from the comparator.

TABLE 1

Revision Rate of Primary Total Conventional Hip Replacement

The revision rate of the Plasmacup total conventional hip prosthesis is compared to all other total conventional hip prostheses.

Table 1: Revision Rates of Primary Total Conventional Hip Replacement

Component	N Revised	N Total	Obs. Years	Revisions/100 Obs. Yrs (95% CI)
Plasmacup	36	482	4225	0.85 (0.60, 1.18)
Other Total Conventional Hip	15859	453455	2721137	0.58 (0.57, 0.59)
TOTAL	15895	453937	2725362	0.58 (0.57, 0.59)

Note: Prostheses no longer used in 2021 are excluded from the comparator. Procedures using metal/metal prostheses with head size larger than 32mm are excluded from the comparator.

TABLE 2

Yearly Cumulative Percent Revision of Primary Total Conventional Hip Replacement

The yearly cumulative percent revision of the Plasmacup total conventional hip prosthesis is compared to all other total conventional hip prostheses.

Table 2: Yearly Cumulative Percent Revision of Primary Total Conventional Hip Replacement

CPR	1 Yr	2 Yrs	3 Yrs	4 Yrs	5 Yrs	6 Yrs	7 Yrs
Plasmacup	4.4 (2.9, 6.6)	5.4 (3.7, 7.8)	5.6 (3.9, 8.1)	5.6 (3.9, 8.1)	5.8 (4.1, 8.3)	6.3 (4.4, 8.8)	7.2 (5.2, 10.0)
Other Total Conventional Hip	1.7 (1.7, 1.8)	2.2 (2.2, 2.2)	2.5 (2.5, 2.6)	2.8 (2.8, 2.9)	3.1 (3.0, 3.2)	3.4 (3.3, 3.5)	3.7 (3.6, 3.7)

CPR	8 Yrs	9 Yrs	10 Yrs	11 Yrs	12 Yrs	13 Yrs	14 Yrs
Plasmacup	7.2 (5.2, 10.0)	7.6 (5.5, 10.4)	7.6 (5.5, 10.4)	8.3 (5.9, 11.5)	8.3 (5.9, 11.5)		
Other Total Conventional Hip	4.0 (3.9, 4.0)	4.3 (4.2, 4.4)	4.6 (4.6, 4.7)	5.0 (4.9, 5.1)	5.4 (5.3, 5.5)	5.8 (5.7, 5.9)	6.3 (6.1, 6.4)

CPR	15 Yrs	16 Yrs	17 Yrs	18 Yrs	19 Yrs	20 Yrs	21 Yrs
Plasmacup							
Other Total Conventional Hip	6.7 (6.5, 6.8)	7.1 (6.9, 7.3)	7.5 (7.3, 7.7)	7.9 (7.6, 8.1)	8.6 (8.3, 8.9)	8.9 (8.5, 9.3)	9.8 (9.0, 10.8)

Note: Prostheses no longer used in 2021 are excluded from the comparator. Procedures using metal/metal prostheses with head size larger than 32mm are excluded from the comparator.

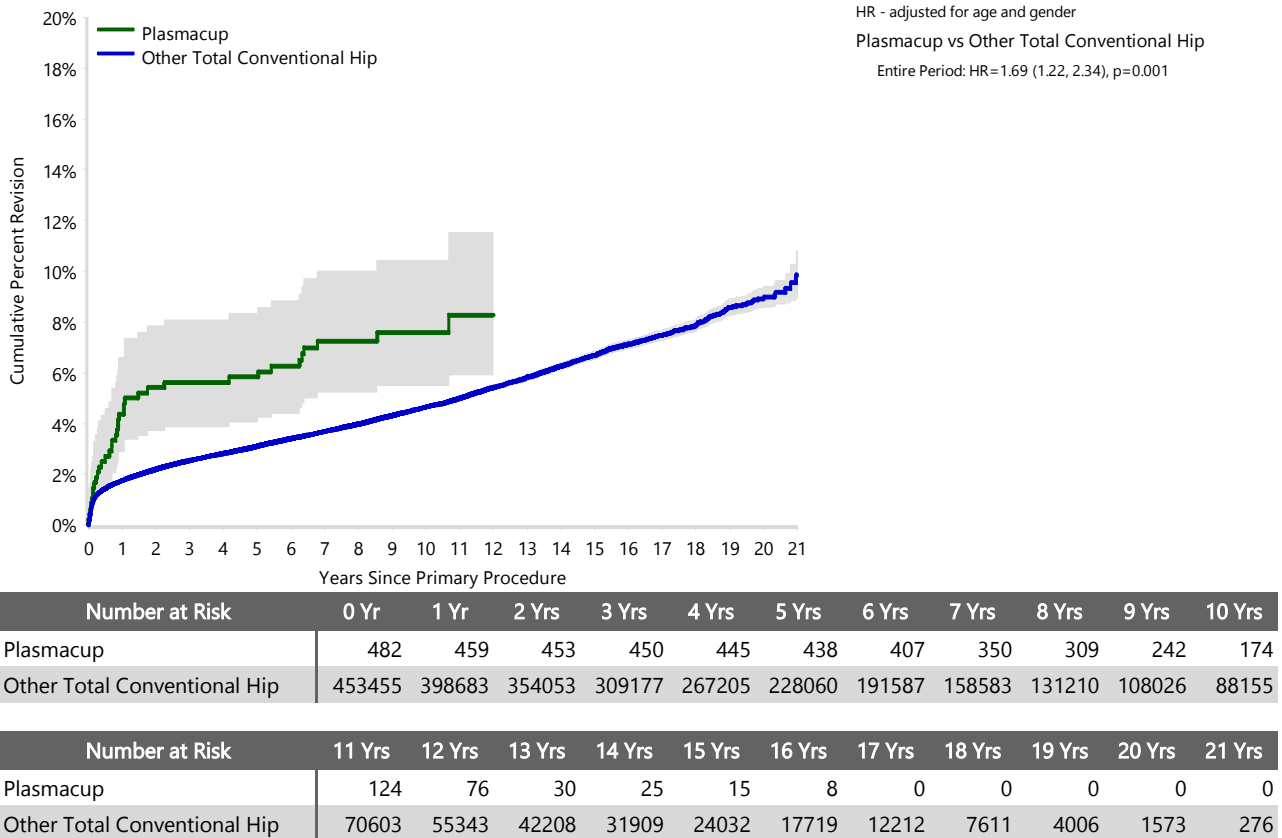
FIGURE 1

Yearly Cumulative Percent Revision of Primary Total Conventional Hip Replacement

The yearly cumulative percent revision of the Plasmacup total conventional hip prosthesis is compared to all other total conventional hip prostheses. In addition, hazard ratios are reported.

Hazard ratios are reported for specific time periods during which the hazard ratio is constant. This is done to enable more specific and valid comparisons of the risk of revision over time. The pattern of variation in risk has important implications with respect to the underlying reasons for any difference.

Figure 1: Cumulative Percent Revision of Primary Total Conventional Hip Replacement



Note: Prostheses no longer used in 2021 are excluded from the comparator. Procedures using metal/metal prostheses with head size larger than 32mm are excluded from the comparator.

TABLE 3**Primary Diagnosis for Revised Primary Total Conventional Hip Replacement**

This table identifies the diagnosis of the primary procedure which was subsequently revised. This information is provided as there is a variation on outcome depending on the primary diagnosis. It is therefore important when considering the reasons for a higher than anticipated rate of revision that there is identification of the primary diagnosis. This information should be compared to the primary diagnosis for the revisions of all other total conventional hip prostheses.

Table 3: Primary Diagnosis for Revised Primary Total Conventional Hip Replacement

Primary Diagnosis	Plasmacup		Other Total Conventional Hip	
	Number	Percent	Number	Percent
Osteoarthritis	33	91.7	13112	82.7
Fractured Neck Of Femur			1164	7.3
Osteonecrosis	3	8.3	718	4.5
Developmental Dysplasia			247	1.6
Rheumatoid Arthritis			173	1.1
Failed Internal Fixation			140	0.9
Tumour			137	0.9
Other Inflammatory Arthritis			91	0.6
Fracture/Dislocation			47	0.3
Arthrodesis Takedown			16	0.1
Other			14	0.1
TOTAL	36	100.0	15859	100.0

Note: Prostheses no longer used in 2021 are excluded from the comparator. Procedures using metal/metal prostheses with head size larger than 32mm are excluded from the comparator.

TABLE 4

Reasons for Revision

This is reported in two ways: a percentage of primary procedures revised and as a percentage of all revision procedures.

% Primaries Revised: This shows the proportional contribution of each revision diagnosis as a percentage of the total number of primary procedures. This percentage can be used to approximate the risk of being revised for that diagnosis. Differing percentages between groups, with the same distribution of follow up time, may identify problems of concern.

% Revisions: The number of revisions for each diagnosis is expressed as a percentage of the total number of revisions. This shows the distribution of reasons for revision within a group but cannot be used as a comparison between groups.

Table 4: Primary Total Conventional Hip Replacement - Reason for Revision (Follow-up Limited to 16.1 Years)

Revision Diagnosis	Number	Plasmacup		Other Total Conventional Hip		
		% Primaries Revised	% Revisions	Number	% Primaries Revised	% Revisions
Prosthesis Dislocation/Instability	4	0.8	11.1	3700	0.8	23.6
Infection	6	1.2	16.7	3538	0.8	22.5
Fracture	2	0.4	5.6	3408	0.8	21.7
Loosening	21	4.4	58.3	3176	0.7	20.2
Pain				285	0.1	1.8
Leg Length Discrepancy	1	0.2	2.8	260	0.1	1.7
Malposition				225	0.0	1.4
Lysis				169	0.0	1.1
Implant Breakage Stem				146	0.0	0.9
Implant Breakage Acetabular Insert				114	0.0	0.7
Incorrect Sizing	1	0.2	2.8	95	0.0	0.6
Wear Acetabular Insert				86	0.0	0.5
Implant Breakage Acetabular				66	0.0	0.4
Metal Related Pathology				64	0.0	0.4
Wear Head				44	0.0	0.3
Tumour				36	0.0	0.2
Implant Breakage Head				30	0.0	0.2
Heterotopic Bone				23	0.0	0.1
Wear Acetabulum				9	0.0	0.1
Progression Of Disease				2	0.0	0.0
Osteonecrosis				1	0.0	0.0
Synovitis				1	0.0	0.0
Other	1	0.2	2.8	228	0.1	1.5
N Revision	36	7.5	100.0	15706	3.5	100.0
N Primary	482			453455		

Note: This table is restricted to revisions within 16.1 years for all groups to allow a time-matched comparison of revisions.

Note: Prostheses no longer used in 2021 are excluded from the comparator. Procedures using metal/metal prostheses with head size larger than 32mm are excluded from the comparator.

FIGURE 2

Cumulative Incidence Revision Diagnosis of Primary Total Conventional Hip Replacement

This figure details the cumulative incidence of the most common reasons for revision. The five most common reasons for revision are included as long as each of these reasons account for more than 10 procedures or at least 5% of all revisions for the Plasmacup total conventional hip prosthesis. A comparative graph is provided of the cumulative incidence for the same reasons for revisions for all other total conventional hip prostheses.

Figure 2: Cumulative Incidence Revision Diagnosis for Primary Total Conventional Hip Replacement

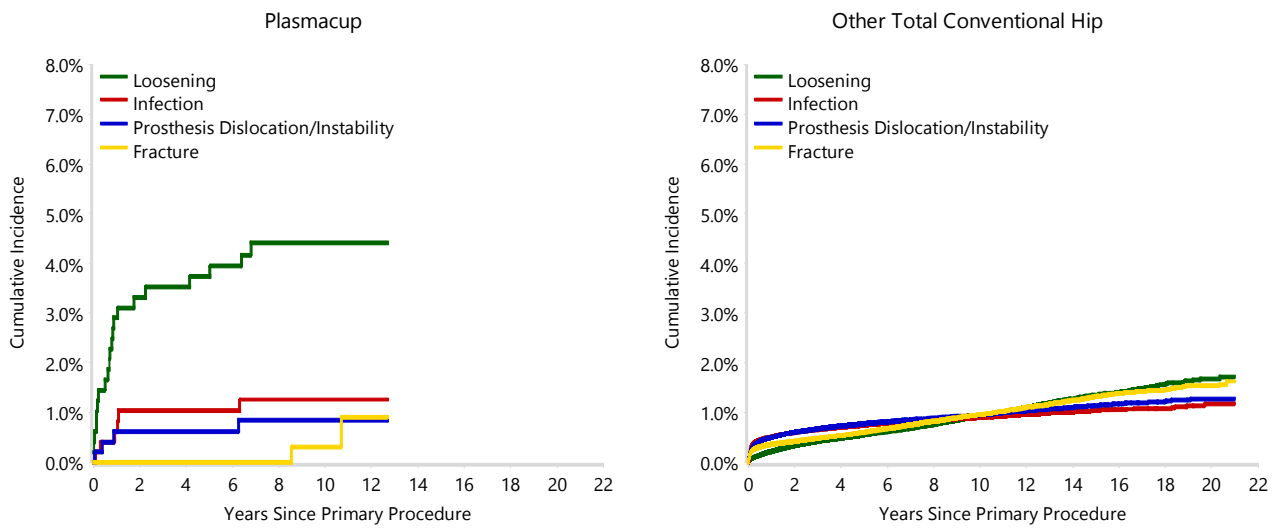


TABLE 5

Type of Revision Performed for Primary Total Conventional Hip Replacement

This analysis identifies the components used in the revision of the Plasmacup total conventional hip prosthesis and compares it to the components used in the revision of all other total conventional hip prostheses.

The reason this analysis is undertaken is to identify whether there is one or more components which are being replaced that differ from the components replaced for revisions of all other total conventional hip prostheses i.e. is there a difference in the type of revision undertaken for the Plasmacup total conventional hip prosthesis compared to all other total conventional hip prostheses.

Table 5: Primary Total Conventional Hip Replacement - Type of Revision (Follow-up Limited to 16.1 Years)

Type of Revision	Plasmacup		Other Total Conventional Hip	
	Number	Percent	Number	Percent
Femoral Component	13	36.1	5114	32.6
Acetabular Component	7	19.4	3014	19.2
THR (Femoral/Acetabular)	6	16.7	1778	11.3
Cement Spacer	3	8.3	592	3.8
Removal of Prostheses			96	0.6
Reinsertion of Components			25	0.2
Total Femoral			6	0.0
Bipolar Head and Femoral			4	0.0
Saddle			1	0.0
N Major	29	80.6	10630	67.7
Head/Insert	2	5.6	3852	24.5
Head Only	5	13.9	776	4.9
Minor Components			272	1.7
Insert Only			172	1.1
Bipolar Only			2	0.0
Cement Only			1	0.0
Head/Neck			1	0.0
N Minor	7	19.4	5076	32.3
TOTAL	36	100.0	15706	100.0

Note: This table is restricted to revisions within 16.1 years for all groups to allow a time-matched comparison of revisions.

Note: Prostheses no longer used in 2021 are excluded from the comparator. Procedures using metal/metal prostheses with head size larger than 32mm are excluded from the comparator.

TABLE 6**Revision Rates of Plasmacup Primary Total Conventional Hip Replacement by Fixation**

This analysis is provided as some prostheses have more than one fixation option. Additionally there are prostheses where an alternative to the recommended approach to fixation was used e.g. a cementless prosthesis that has been cemented or vice-versa.

Table 6: Revised Number of Plasmacup Primary Total Conventional Hip Replacement by Fixation

Fixation	N Revised	N Total
Cementless	31	382
Hybrid (Femur Cemented)	5	100
TOTAL	36	482

TABLE 7**Revision Rates of Plasmacup Primary Total Conventional Hip Replacement by Bearing Surface**

This analysis is provided as some prostheses are combined with a variety of bearing surfaces. All bearing surfaces used with this prosthesis are listed.

Table 7: Revised Number of Plasmacup Primary Total Conventional Hip Replacement by Bearing Surface

Bearing Surface	N Revised	N Total
Ceramic/Ceramic	32	413
Ceramic/Non XLPE	1	10
Metal/Non XLPE	3	58
Unknown	0	1
TOTAL	36	482

TABLE 8**Revision Rates of Plasmacup Primary Total Conventional Hip Replacement by Approach**

This analysis is provided as some prostheses are used with a variety of surgical approaches. All surgical approaches used with this prosthesis are listed.

Table 8: Revised Number of Plasmacup Primary Total Conventional Hip Replacement by Approach

Approach	N Revised	N Total
Anterior	2	50
Posterior	0	1
TOTAL	2	51

Note: Excludes 431 procedures with no approach recorded

TABLE 9

Revision Rates of Primary Total Conventional Hip Replacement by State

This enables a state by state variation to be identified for the Plasmacup total conventional hip prosthesis and provides the comparative data for each of the states for all other total conventional hip prostheses.

The purpose of this analysis is to determine if the higher than anticipated rate of revision has widespread distribution between states. If there is widespread distribution then the reason for the higher than anticipated rate of revision is unlikely to be surgeon specific. If the prosthesis has been used in only a small number of states it is not possible to distinguish if the higher than anticipated rate of revision is related to the prosthesis, surgeon, technique or patient.

Table 9: Revised Number of Primary Total Conventional Hip Replacement by State

Component	State	N Revised	N Total
Plasmacup	NSW	36	473
	VIC	0	4
	QLD	0	5
Other Total Conventional Hip	NSW	4298	132969
	VIC	3982	116998
	QLD	3146	80122
	WA	2184	53952
	SA	1415	41929
	TAS	372	15098
	ACT/NT	462	12387
TOTAL		15895	453937

Note: Prostheses no longer used in 2021 are excluded from the comparator. Procedures using metal/metal prostheses with head size larger than 32mm are excluded from the comparator.

TABLE 10**Number of Revisions of Plasmacup Primary Total Conventional Hip Replacement by Year of Implant**

This analysis details the number of prostheses reported each year to the Registry for the Plasmacup total conventional hip prosthesis. It also provides the subsequent number of revisions of the primaries reported in that year.

Primary procedures performed in later years have had less follow up time therefore the number revised is expected to be less than the number revised in earlier years. For example, a primary procedure performed in 2021 has a maximum of one year to be revised, whereas a primary procedure performed in 2019 has a maximum of three years to be revised.

Table 10: Number of Revisions of Plasmacup Primary Total Conventional Hip Replacement by Year of Implant

Year of Implant	Number Revised	Total Number
2005	0	10
2006	2	16
2007	1	13
2008	2	7
2009	6	54
2010	8	60
2011	6	59
2012	4	77
2013	2	70
2014	3	44
2015	2	51
2016	0	21
TOTAL	36	482

TABLE 11

Revision Rates of Plasmacup Primary Total Conventional Hip Replacement by Catalogue Number Range

Many prostheses have a number of catalogue ranges. The catalogue range is specific to particular design features; more than one catalogue range usually indicates a minor difference in design in a particular Plasmacup prosthesis.

This analysis has been undertaken to determine if the revision rate varies according to the catalogue number range.

Model	Catalogue Range	Catalogue Description	Cement	Material	Coating	Fixation
Acetabular						
Plasmacup	NC444T-NC468T	SC PLASMAPORE CAP	NO	METAL		POROUS
Plasmacup	NH140T-NH168T	MSC ACETABULAR SHELL	NO	METAL		POROUS
Plasmacup	NH340T-NH368T	NSC ACETABULAR SHELL	NO	METAL		POROUS
Plasmacup	NH544T-NH568T	DC ACETABULAR SHELL	NO	METAL		
Plasmacup	NH644D-NH654D	HA SHELL & BIOLOX DELTA CERAMIC LINER	NO	CERAMIC	HA COATED	

Table 11: Revised Number of Plasmacup Primary Total Conventional Hip Replacement by Catalogue Number Range

Acetabular Range	N Revised	N Total
NC444T-NC468T	23	289
NH140T-NH168T	1	3
NH340T-NH368T	1	13
NH544T-NH568T	0	5
NH644D-NH654D	11	172
TOTAL	36	482

TABLE 12

Revision Rates of Plasmacup Primary Total Conventional Hip Replacement by Component

A prosthesis may be combined with multiple components. This analysis has been undertaken to determine if the revision rate varies according to the component with which it is combined.

Table 12: Revised Number of Plasmacup Primary Total Conventional Hip Replacement by Femoral Stem Component

Femoral Stem Component	N Revised	N Total
Accolade I	2	27
Excia	5	92
Excia (cless)	13	164
Friendly Hip	0	1
Furlong	1	3
Hip and Go	0	25
Metha	3	80
Metha (exch neck)	12	78
S-Rom	0	7
Spectron EF	0	4
Standard C	0	1
TOTAL	36	482