

GHE Total Conventional Hip Investigation

Note: This analysis compares the GHE femoral stem prosthesis with all other total conventional hip prostheses.

This prosthesis has been identified as having a significantly higher rate of revision. For a detailed explanation of the process used by the Registry that results in identification of prostheses that have a higher than anticipated rate of revision please refer to the Prostheses with Higher than Anticipated Rates of Revision chapter of the most recent AOANJRR Annual Report, <https://aoanjrr.sahmri.com/annual-reports-2022>.

Note: Procedures using metal/metal prostheses with head size larger than 32mm are excluded from the comparator. Procedures using prostheses with no recorded use in 2021 are excluded from the comparator.

TABLE 1

Revision Rate of Primary Total Conventional Hip Replacement

The revision rate of the GHE total conventional hip prosthesis is compared to all other total conventional hip prostheses.

Table 1: Revision Rates of Primary Total Conventional Hip Replacement

Component	N Revised	N Total	Obs. Years	Revisions/100 Obs. Yrs (95% CI)
GHE	13	114	855	1.52 (0.81, 2.60)
Other Total Conventional Hip	15859	453455	2721137	0.58 (0.57, 0.59)
TOTAL	15872	453569	2721992	0.58 (0.57, 0.59)

Note: Prostheses no longer used in 2021 are excluded from the comparator. Procedures using metal/metal prostheses with head size larger than 32mm are excluded from the comparator.

TABLE 2

Yearly Cumulative Percent Revision of Primary Total Conventional Hip Replacement

The yearly cumulative percent revision of the GHE total conventional hip prosthesis is compared to all other total conventional hip prostheses.

Table 2: Yearly Cumulative Percent Revision of Primary Total Conventional Hip Replacement

CPR	1 Yr	2 Yrs	3 Yrs	4 Yrs	5 Yrs	6 Yrs	7 Yrs
GHE	2.6 (0.9, 8.0)	4.4 (1.9, 10.3)	5.3 (2.4, 11.5)	5.3 (2.4, 11.5)	8.2 (4.3, 15.2)	8.2 (4.3, 15.2)	10.4 (5.9, 18.1)
Other Total Conventional Hip	1.7 (1.7, 1.8)	2.2 (2.2, 2.2)	2.5 (2.5, 2.6)	2.8 (2.8, 2.9)	3.1 (3.0, 3.2)	3.4 (3.3, 3.5)	3.7 (3.6, 3.7)

CPR	8 Yrs	9 Yrs	10 Yrs	11 Yrs	12 Yrs	13 Yrs	14 Yrs
GHE	11.8 (6.8, 19.9)						
Other Total Conventional Hip	4.0 (3.9, 4.0)	4.3 (4.2, 4.4)	4.6 (4.6, 4.7)	5.0 (4.9, 5.1)	5.4 (5.3, 5.5)	5.8 (5.7, 5.9)	6.3 (6.1, 6.4)

CPR	15 Yrs	16 Yrs	17 Yrs	18 Yrs	19 Yrs	20 Yrs	21 Yrs
GHE							
Other Total Conventional Hip	6.7 (6.5, 6.8)	7.1 (6.9, 7.3)	7.5 (7.3, 7.7)	7.9 (7.6, 8.1)	8.6 (8.3, 8.9)	8.9 (8.5, 9.3)	9.8 (9.0, 10.8)

Note: Prostheses no longer used in 2021 are excluded from the comparator. Procedures using metal/metal prostheses with head size larger than 32mm are excluded from the comparator.

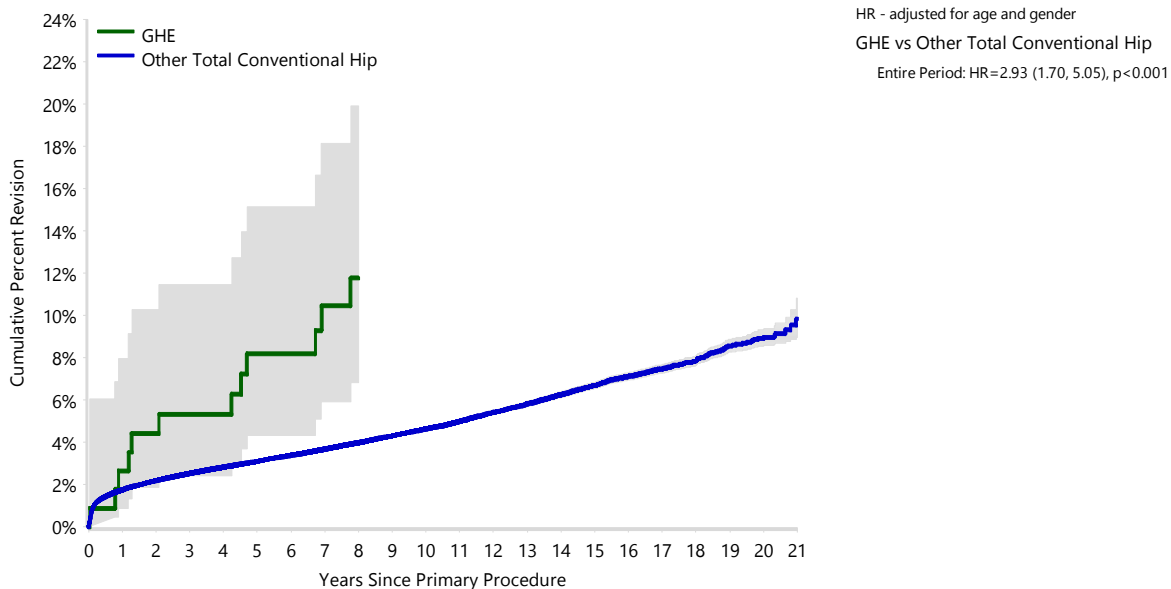
FIGURE 1

Yearly Cumulative Percent Revision of Primary Total Conventional Hip Replacement

The yearly cumulative percent revision of the GHE total conventional hip prosthesis is compared to all other total conventional hip prostheses. In addition, hazard ratios are reported.

Hazard ratios are reported for specific time periods during which the hazard ratio is constant. This is done to enable more specific and valid comparisons of the risk of revision over time. The pattern of variation in risk has important implications with respect to the underlying reasons for any difference.

Figure 1: Cumulative Percent Revision of Primary Total Conventional Hip Replacement



Number at Risk	0 Yr	1 Yr	2 Yrs	3 Yrs	4 Yrs	5 Yrs	6 Yrs	7 Yrs	8 Yrs	9 Yrs	10 Yrs
GHE	114	110	105	100	100	96	91	78	62	37	12
Other Total Conventional Hip	453455	398683	354053	309177	267205	228060	191587	158583	131210	108026	88155

Number at Risk	11 Yrs	12 Yrs	13 Yrs	14 Yrs	15 Yrs	16 Yrs	17 Yrs	18 Yrs	19 Yrs	20 Yrs	21 Yrs
GHE	9	0	0	0	0	0	0	0	0	0	0
Other Total Conventional Hip	70603	55343	42208	31909	24032	17719	12212	7611	4006	1573	276

Note: Prostheses no longer used in 2021 are excluded from the comparator. Procedures using metal/metal prostheses with head size larger than 32mm are excluded from the comparator.

TABLE 3**Primary Diagnosis for Revised Primary Total Conventional Hip Replacement**

This table identifies the diagnosis of the primary procedure which was subsequently revised. This information is provided as there is a variation on outcome depending on the primary diagnosis. It is therefore important when considering the reasons for a higher than anticipated rate of revision that there is identification of the primary diagnosis. This information should be compared to the primary diagnosis for the revisions of all other total conventional hip prostheses.

Table 3: Primary Diagnosis for Revised Primary Total Conventional Hip Replacement

Primary Diagnosis	GHE		Other Total Conventional Hip	
	Number	Percent	Number	Percent
Osteoarthritis	11	84.6	13112	82.7
Fractured Neck Of Femur	1	7.7	1164	7.3
Osteonecrosis			718	4.5
Developmental Dysplasia			247	1.6
Rheumatoid Arthritis	1	7.7	173	1.1
Failed Internal Fixation			140	0.9
Tumour			137	0.9
Other Inflammatory Arthritis			91	0.6
Fracture/Dislocation			47	0.3
Arthrodesis Takedown			16	0.1
Other			14	0.1
TOTAL	13	100.0	15859	100.0

Note: Prostheses no longer used in 2021 are excluded from the comparator. Procedures using metal/metal prostheses with head size larger than 32mm are excluded from the comparator.

TABLE 4

Reasons for Revision

This is reported in two ways: a percentage of primary procedures revised and as a percentage of all revision procedures.

% Primaries Revised: This shows the proportional contribution of each revision diagnosis as a percentage of the total number of primary procedures. This percentage can be used to approximate the risk of being revised for that diagnosis. Differing percentages between groups, with the same distribution of follow up time, may identify problems of concern.

% Revisions: The number of revisions for each diagnosis is expressed as a percentage of the total number of revisions. This shows the distribution of reasons for revision within a group but cannot be used as a comparison between groups.

Table 4: Primary Total Conventional Hip Replacement - Reason for Revision (Follow-up Limited to 11.5 Years)

Revision Diagnosis	Number	GHE		Other Total Conventional Hip		
		% Primaries Revised	% Revisions	Number	% Primaries Revised	% Revisions
Prosthesis Dislocation/Instability	5	4.4	38.5	3598	0.8	24.1
Infection	1	0.9	7.7	3463	0.8	23.2
Fracture	1	0.9	7.7	3205	0.7	21.4
Loosening	2	1.8	15.4	2944	0.6	19.7
Pain	1	0.9	7.7	279	0.1	1.9
Leg Length Discrepancy	1	0.9	7.7	259	0.1	1.7
Malposition	1	0.9	7.7	223	0.0	1.5
Implant Breakage Stem				133	0.0	0.9
Lysis	1	0.9	7.7	123	0.0	0.8
Implant Breakage Acetabular Insert				102	0.0	0.7
Incorrect Sizing				94	0.0	0.6
Implant Breakage Acetabular				62	0.0	0.4
Wear Acetabular Insert				56	0.0	0.4
Metal Related Pathology				55	0.0	0.4
Wear Head				41	0.0	0.3
Tumour				36	0.0	0.2
Implant Breakage Head				27	0.0	0.2
Heterotopic Bone				23	0.0	0.2
Wear Acetabulum				7	0.0	0.0
Progression Of Disease				2	0.0	0.0
Osteonecrosis				1	0.0	0.0
Synovitis				1	0.0	0.0
Other				224	0.0	1.5
N Revision	13	11.4	100.0	14958	3.3	100.0
N Primary	114			453455		

Note: This table is restricted to revisions within 11.5 years for all groups to allow a time-matched comparison of revisions.

Note: Prostheses no longer used in 2021 are excluded from the comparator. Procedures using metal/metal prostheses with head size larger than 32mm are excluded from the comparator.

FIGURE 2

Cumulative Incidence Revision Diagnosis of Primary Total Conventional Hip Replacement

This figure details the cumulative incidence of the most common reasons for revision. The five most common reasons for revision are included as long as each of these reasons account for more than 10 procedures or at least 5% of all revisions for the GHE total conventional hip prosthesis. A comparative graph is provided of the cumulative incidence for the same reasons for revisions for all other total conventional hip prostheses.

Figure 2: Cumulative Incidence Revision Diagnosis for Primary Total Conventional Hip Replacement

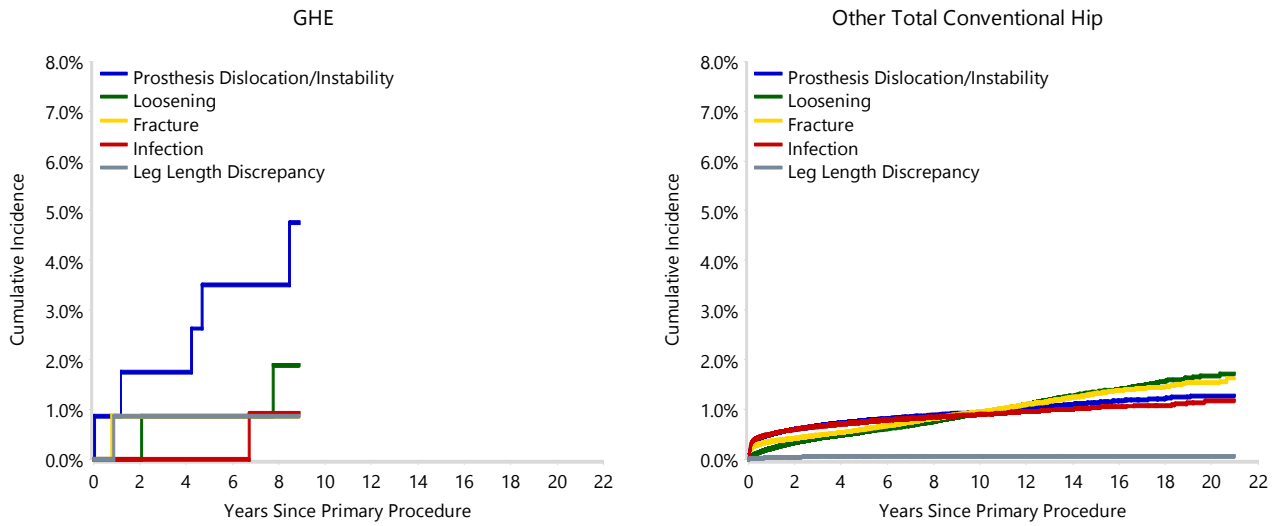


TABLE 5

Type of Revision Performed for Primary Total Conventional Hip Replacement

This analysis identifies the components used in the revision of the GHE total conventional hip prosthesis and compares it to the components used in the revision of all other total conventional hip prostheses.

The reason this analysis is undertaken is to identify whether there is one or more components which are being replaced that differ from the components replaced for revisions of all other total conventional hip prostheses i.e. is there a difference in the type of revision undertaken for the GHE total conventional hip prosthesis compared to all other total conventional hip prostheses.

Table 5: Primary Total Conventional Hip Replacement - Type of Revision (Follow-up Limited to 11.5 Years)

Type of Revision	GHE		Other Total Conventional Hip	
	Number	Percent	Number	Percent
Femoral Component	2	15.4	4848	32.4
Acetabular Component	7	53.8	2838	19.0
THR (Femoral/Acetabular)	1	7.7	1640	11.0
Cement Spacer			576	3.9
Removal of Prostheses			93	0.6
Reinsertion of Components			25	0.2
Total Femoral			5	0.0
Bipolar Head and Femoral			4	0.0
Saddle			1	0.0
N Major	10	76.9	10030	67.1
Head/Insert	1	7.7	3719	24.9
Head Only	2	15.4	769	5.1
Minor Components			265	1.8
Insert Only			171	1.1
Bipolar Only			2	0.0
Cement Only			1	0.0
Head/Neck			1	0.0
N Minor	3	23.1	4928	32.9
TOTAL	13	100.0	14958	100.0

Note: This table is restricted to revisions within 11.5 years for all groups to allow a time-matched comparison of revisions.

Note: Prostheses no longer used in 2021 are excluded from the comparator. Procedures using metal/metal prostheses with head size larger than 32mm are excluded from the comparator.

TABLE 6**Revision Rates of GHE Primary Total Conventional Hip Replacement by Fixation**

This analysis is provided as some prostheses have more than one fixation option. Additionally there are prostheses where an alternative to the recommended approach to fixation was used e.g. a cementless prosthesis that has been cemented or vice-versa.

Table 6: Revised Number of GHE Primary Total Conventional Hip Replacement by Fixation

Fixation	N Revised	N Total
Cementless	13	113
Hybrid (Femur Cemented)	0	1
TOTAL	13	114

TABLE 7**Revision Rates of GHE Primary Total Conventional Hip Replacement by Bearing Surface**

This analysis is provided as some prostheses are combined with a variety of bearing surfaces. All bearing surfaces used with this prosthesis are listed.

Table 7: Revised Number of GHE Primary Total Conventional Hip Replacement by Bearing Surface

Bearing Surface	N Revised	N Total
Ceramic/Ceramic	1	23
Ceramic/Non XLPE	11	84
Metal/Non XLPE	1	7
TOTAL	13	114

TABLE 8**Revision Rates of GHE Primary Total Conventional Hip Replacement by Approach**

This analysis is provided as some prostheses are used with a variety of surgical approaches. All surgical approaches used with this prosthesis are listed.

Table 8: Revised Number of GHE Primary Total Conventional Hip Replacement by Approach

Approach	N Revised	N Total
Lateral	0	2
Posterior	2	10
TOTAL	2	12

Note: Excludes 102 procedures with no approach recorded

TABLE 9

Revision Rates of Primary Total Conventional Hip Replacement by State

This enables a state by state variation to be identified for the GHE total conventional hip prosthesis and provides the comparative data for each of the states for all other total conventional hip prostheses.

The purpose of this analysis is to determine if the higher than anticipated rate of revision has widespread distribution between states. If there is widespread distribution then the reason for the higher than anticipated rate of revision is unlikely to be surgeon specific. If the prosthesis has been used in only a small number of states it is not possible to distinguish if the higher than anticipated rate of revision is related to the prosthesis, surgeon, technique or patient.

Table 9: Revised Number of Primary Total Conventional Hip Replacement by State

Component	State	N Revised	N Total
GHE	NSW	13	106
	WA	0	8
Other Total Conventional Hip	NSW	4298	132969
	VIC	3982	116998
	QLD	3146	80122
	WA	2184	53952
	SA	1415	41929
	TAS	372	15098
	ACT/NT	462	12387
TOTAL		15872	453569

Note: Prostheses no longer used in 2021 are excluded from the comparator. Procedures using metal/metal prostheses with head size larger than 32mm are excluded from the comparator.

TABLE 10**Number of Revisions of GHE Primary Total Conventional Hip Replacement by Year of Implant**

This analysis details the number of prostheses reported each year to the Registry for the GHE total conventional hip prosthesis. It also provides the subsequent number of revisions of the primaries reported in that year.

Primary procedures performed in later years have had less follow up time therefore the number revised is expected to be less than the number revised in earlier years. For example, a primary procedure performed in 2021 has a maximum of one year to be revised, whereas a primary procedure performed in 2019 has a maximum of three years to be revised.

Table 10: Number of Revisions of GHE Primary Total Conventional Hip Replacement by Year of Implant

Year of Implant	Number Revised	Total Number
2010	0	9
2011	1	4
2012	5	47
2013	1	28
2014	4	14
2015	2	12
TOTAL	13	114

TABLE 11**Revision Rates of GHE Primary Total Conventional Hip Replacement by Catalogue Number Range**

Many prostheses have a number of catalogue ranges. The catalogue range is specific to particular design features; more than one catalogue range usually indicates a minor difference in design in a particular GHE prosthesis.

This analysis has been undertaken to determine if the revision rate varies according to the catalogue number range.

Model	Catalogue Range	Catalogue Description	Cement	Material
Femoral Stem				
GHE	11371090-11387150	TINB-COATED COLLARLESS HIP STEM	NO	METAL
GHE	11433000-11444000	HIP STEM T12/14	NO	
GHE	11700111-11700127	TINB-COATED COLLARLESS STEM	NO	METAL
GHE	12371090-12387150	TINB-COATED LATERAL COLLARLESS HIP STEM	NO	METAL

Table 11: Revised Number of GHE Primary Total Conventional Hip Replacement by Catalogue Number Range

Femoral Stem Range	N Revised	N Total
11371090-11387150	0	2
11433000-11444000	0	2
11700111-11700127	0	10
12371090-12387150	13	100
TOTAL	13	114

TABLE 12**Revision Rates of GHE Primary Total Conventional Hip Replacement by Component**

A prosthesis may be combined with multiple components. This analysis has been undertaken to determine if the revision rate varies according to the component with which it is combined.

Table 12: Revised Number of GHE Primary Total Conventional Hip Replacement by Acetabular Component

Acetabular Component	N Revised	N Total
Bionik	0	4
DeltaLox	9	88
Novae	1	4
Saturne	0	4
Versafitcup DM	3	14
TOTAL	13	114