



2021 Annual Report – Hip, Knee and Shoulder Arthroplasty

ERRATUM #3

Amended 21 March 2022

Erratum for the PRINTED version of the 2021 Annual Report – Hip Knee and Shoulder Arthroplasty

Due to a polyethylene classification error identified post publication, Tables ST56, ST68 and ST80 have been removed and Tables ST55, ST67, ST79 and Figures ST38, ST39, ST51, ST52, ST63 and ST64 have been replaced. These amendments have been applied to pages 331, 332, 348, 349, 365 and 366.

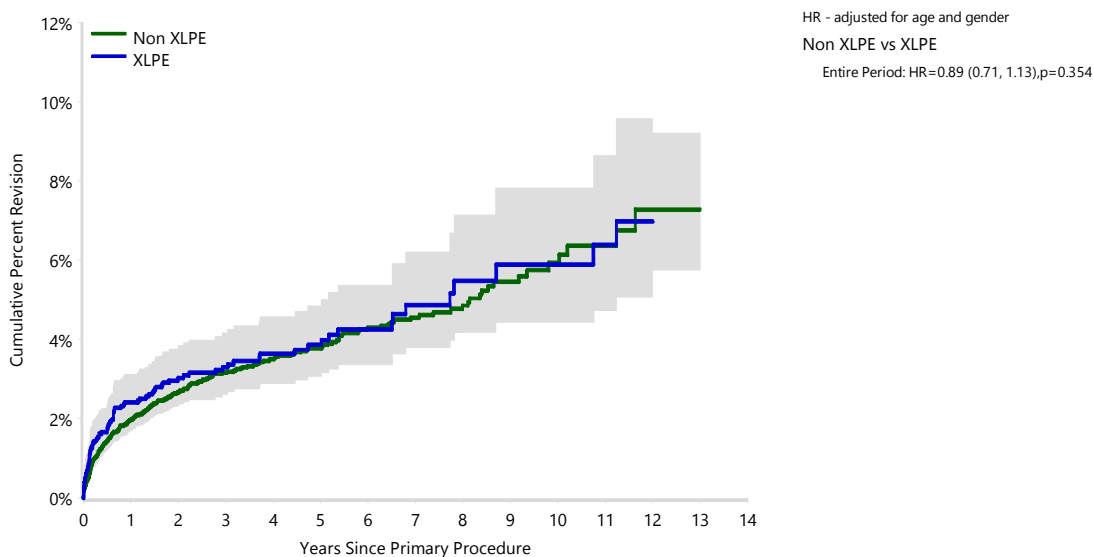
CORRECTED TABLE & GRAPHS

Table ST55 Cumulative Percent Revision of Primary Total Reverse Shoulder Replacement by Polyethylene Type (Primary Diagnosis OA)

Polyethylene Type	N Revised	N Total	1 Yr	3 Yrs	5 Yrs	7 Yrs	10 Yrs	14 Yrs
Non XLPE	317	9470	2.0 (1.7, 2.3)	3.2 (2.8, 3.6)	3.8 (3.3, 4.2)	4.6 (4.0, 5.2)	5.9 (5.0, 7.0)	
XLPE	89	2481	2.4 (1.9, 3.1)	3.3 (2.6, 4.2)	3.9 (3.1, 4.9)	4.9 (3.8, 6.2)	5.9 (4.4, 7.8)	
TOTAL	406	11951						

Note: Restricted to modern prostheses

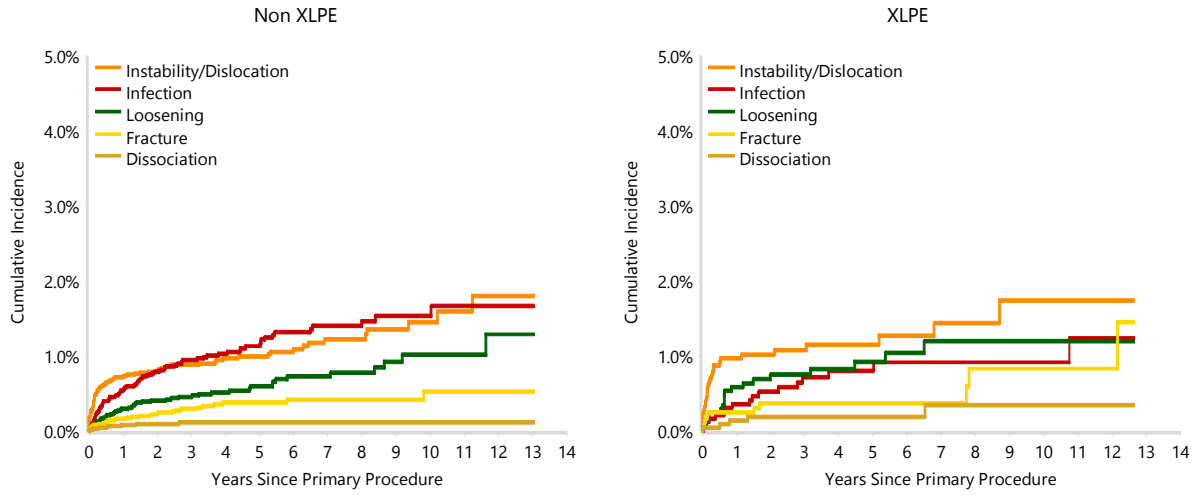
Figure ST38 Cumulative Percent Revision of Primary Total Reverse Shoulder Replacement by Polyethylene Type (Primary Diagnosis OA)



Number at Risk	0 Yr	1 Yr	3 Yrs	5 Yrs	7 Yrs	10 Yrs	14 Yrs
Non XLPE	9470	7826	4950	2876	1546	463	4
XLPE	2481	1960	1279	766	407	195	4

Note: Restricted to modern prostheses

Figure ST39 Cumulative Incidence Revision Diagnosis of Primary Total Reverse Shoulder Replacement by Polyethylene Type (Primary Diagnosis OA)



Note: Restricted to modern prostheses

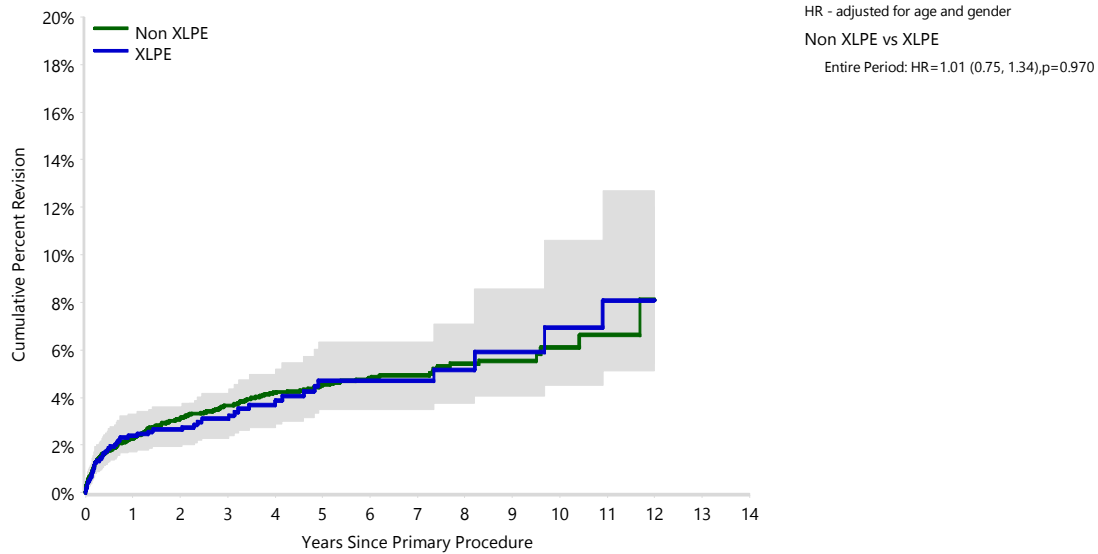
Table ST56 Table no longer provided

Table ST67 Cumulative Percent Revision of Primary Total Reverse Shoulder Replacement by Polyethylene Type (Primary Diagnosis Rotator Cuff Arthropathy)

Polyethylene Type	N Revised	N Total	1 Yr	3 Yrs	5 Yrs	7 Yrs	10 Yrs	14 Yrs
Non XLPE	296	8027	2.3 (2.0, 2.7)	3.7 (3.2, 4.1)	4.5 (4.0, 5.1)	4.9 (4.3, 5.6)	6.1 (5.1, 7.3)	
XLPE	56	1641	2.4 (1.7, 3.3)	3.1 (2.3, 4.2)	4.7 (3.5, 6.3)	4.7 (3.5, 6.3)	7.0 (4.5, 10.6)	
TOTAL	352	9668						

Note: Restricted to modern prostheses

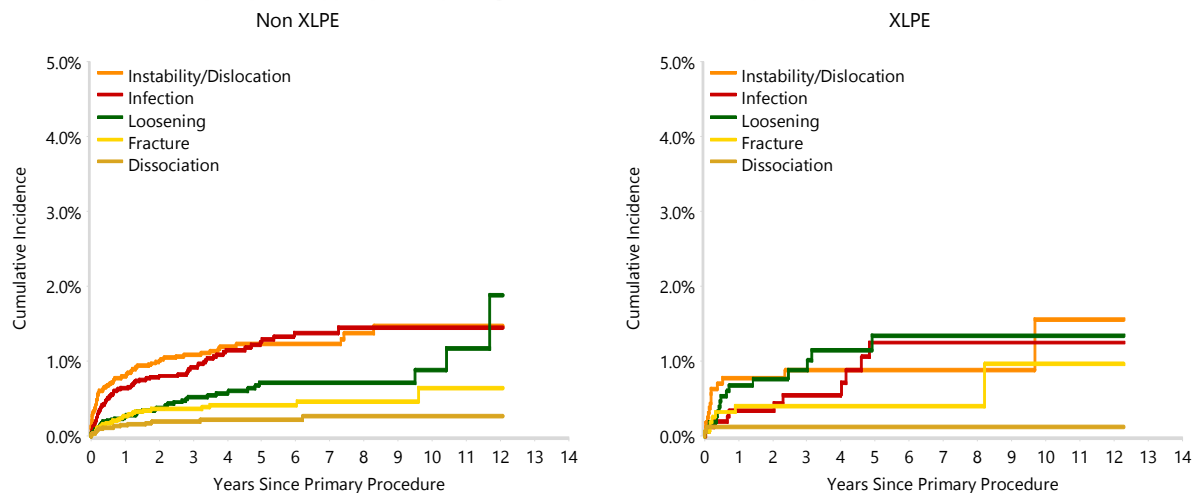
Figure ST51 Cumulative Percent Revision of Primary Total Reverse Shoulder Replacement by Polyethylene Type (Primary Diagnosis Rotator Cuff Arthropathy)



Number at Risk	0 Yr	1 Yr	3 Yrs	5 Yrs	7 Yrs	10 Yrs	14 Yrs
Non XLPE	8027	6579	3934	2211	1145	247	2
XLPE	1641	1232	693	421	236	86	4

Note: Restricted to modern prostheses

Figure ST52 Cumulative Incidence Revision Diagnosis of Primary Total Reverse Shoulder Replacement by Polyethylene Type (Primary Diagnosis Rotator Cuff Arthropathy)



Note: Restricted to modern prostheses

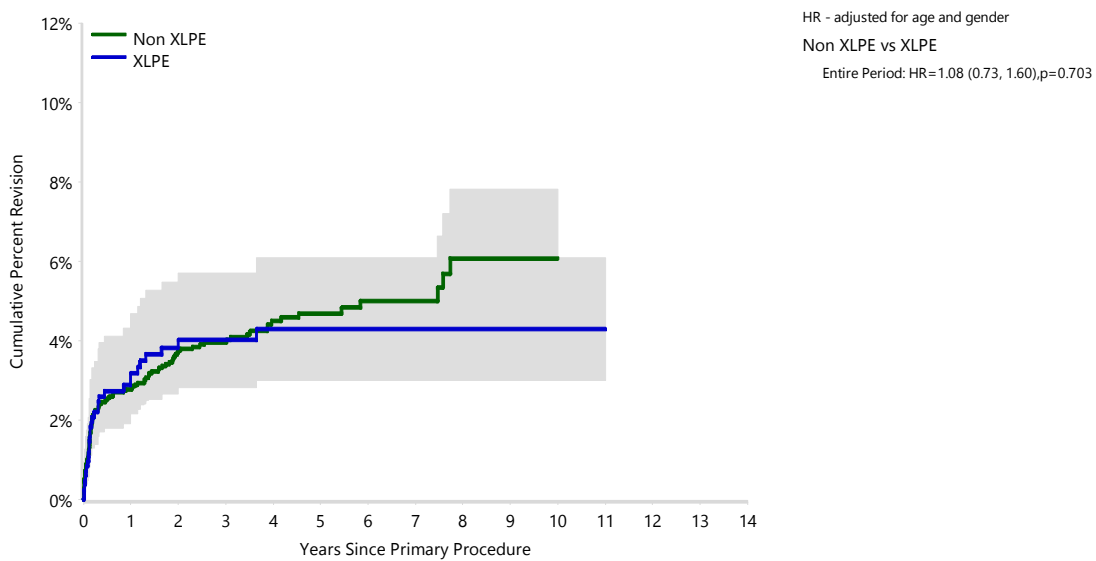
Table ST68 Table no longer provided

Table ST79 Cumulative Percent Revision of Primary Total Reverse Shoulder Replacement by Polyethylene Type (Primary Diagnosis Fracture)

Polyethylene Type	N Revised	N Total	1 Yr	3 Yrs	5 Yrs	7 Yrs	10 Yrs	14 Yrs
Non XLPE	125	3162	2.8 (2.3, 3.4)	4.0 (3.3, 4.8)	4.7 (3.9, 5.6)	5.0 (4.1, 6.1)	6.1 (4.7, 7.8)	
XLPE	31	840	3.2 (2.2, 4.7)	4.0 (2.8, 5.7)	4.3 (3.0, 6.1)	4.3 (3.0, 6.1)	4.3 (3.0, 6.1)	
TOTAL	156	4002						

Note: Restricted to modern prostheses

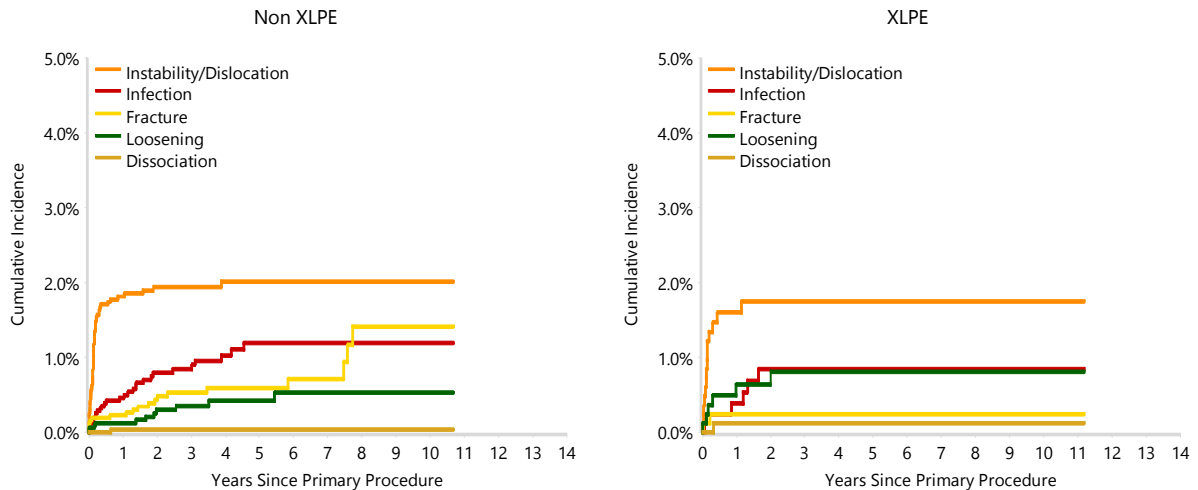
Figure ST63 Cumulative Percent Revision of Primary Total Reverse Shoulder Replacement by Polyethylene Type (Primary Diagnosis Fracture)



Number at Risk	0 Yr	1 Yr	3 Yrs	5 Yrs	7 Yrs	10 Yrs	14 Yrs
Non XLPE	3162	2512	1496	800	357	69	1
XLPE	840	640	409	242	142	51	0

Note: Restricted to modern prostheses

Figure ST64 Cumulative Incidence Revision Diagnosis of Primary Total Reverse Shoulder Replacement by Polyethylene Type (Primary Diagnosis Fracture)



Note: Restricted to modern prostheses

Table ST80 Table no longer provided

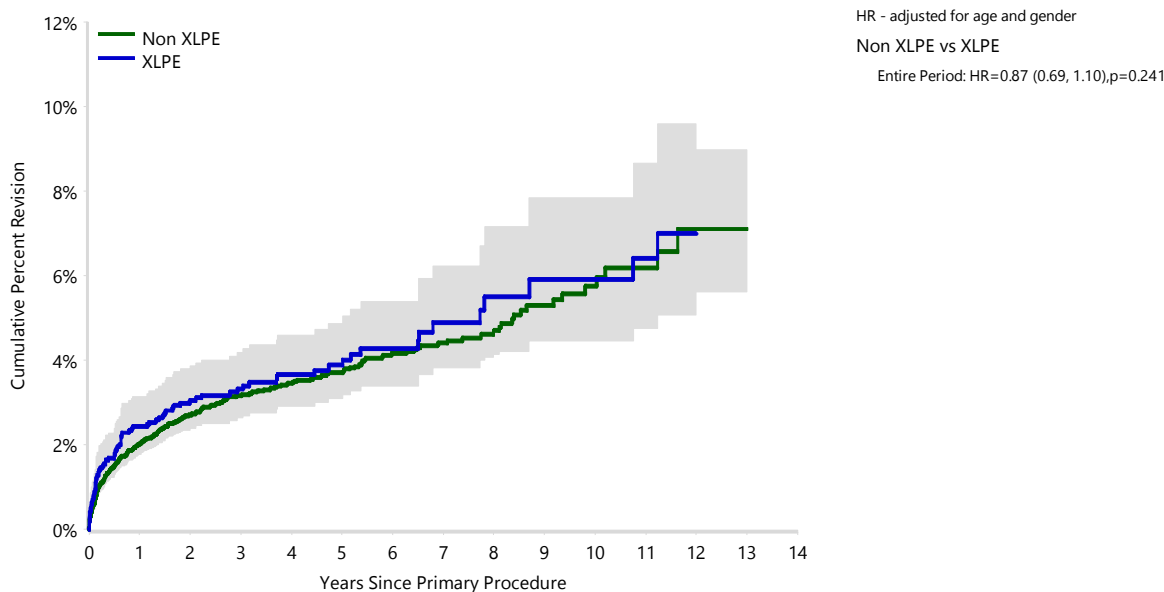
ORIGINAL TABLES & GRAPHS

Table ST55 Cumulative Percent Revision of Primary Total Reverse Shoulder Replacement by Polyethylene Type (Primary Diagnosis OA)

Polyethylene Type	N Revised	N Total	1 Yr	3 Yrs	5 Yrs	7 Yrs	10 Yrs	14 Yrs
Non XLPE	385	11890	2.0 (1.8, 2.3)	3.2 (2.8, 3.5)	3.7 (3.3, 4.1)	4.4 (3.9, 5.0)	5.8 (4.9, 6.8)	
XLPE	89	2448	2.4 (1.9, 3.2)	3.3 (2.6, 4.2)	3.9 (3.1, 4.9)	4.9 (3.8, 6.2)	5.9 (4.5, 7.8)	
TOTAL	474	14338						

Note: Restricted to modern prostheses

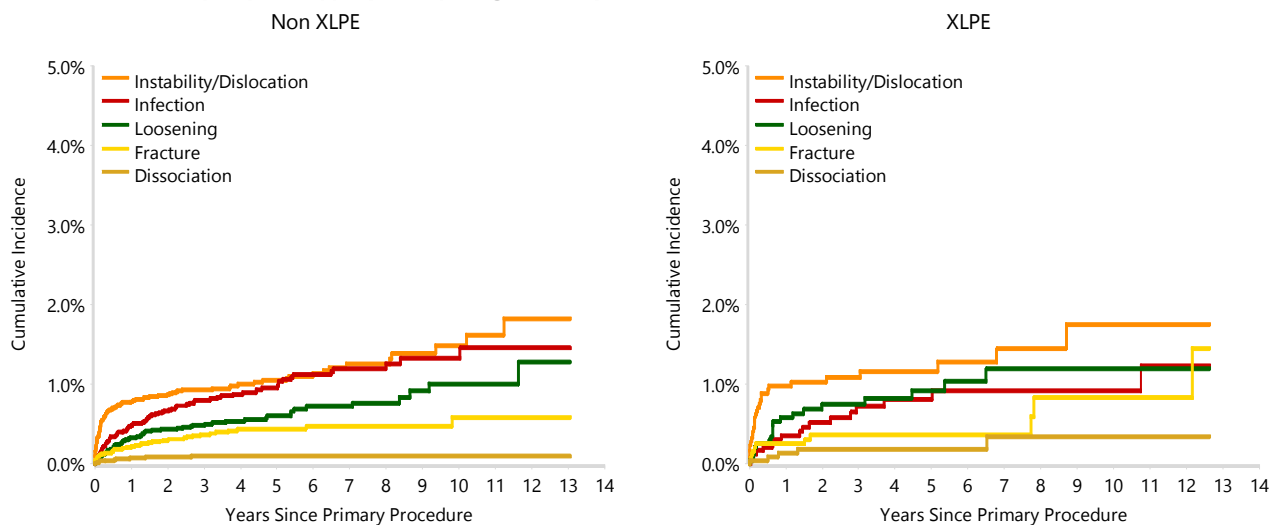
Figure ST38 Cumulative Percent Revision of Primary Total Reverse Shoulder Replacement by Polyethylene Type (Primary Diagnosis OA)



Number at Risk	0 Yr	1 Yr	3 Yrs	5 Yrs	7 Yrs	10 Yrs	14 Yrs
Non XLPE	11890	9776	5979	3305	1653	469	4
XLPE	2448	1957	1279	766	407	195	4

Note: Restricted to modern prostheses

Figure ST39 Cumulative Incidence Revision Diagnosis of Primary Total Reverse Shoulder Replacement by Polyethylene Type (Primary Diagnosis OA)



Note: Restricted to modern prostheses

Table ST56 Primary Total Reverse Shoulder Replacement by Polyethylene Type and Prosthesis Combination (Primary Diagnosis OA)

Prosthesis Combination	Non XLPE			XLPE			TOTAL		
	N	Row%	Col%	N	Row%	Col%	N	Row%	Col%
SMR/SMR L1	2346	67.9	94.1	1109	32.1	97.1	3455	100.0	95.0
AltiVate Reverse/RSP	71	79.8	2.8	18	20.2	1.6	89	100.0	2.4
SMR/SMR Axioma	56	84.8	2.2	10	15.2	0.9	66	100.0	1.8
SMR/Custom Made (Lima)	20	80.0	0.8	5	20.0	0.4	25	100.0	0.7
TOTAL	2493	68.6	100.0	1142	31.4	100.0	3635	100.0	100.0

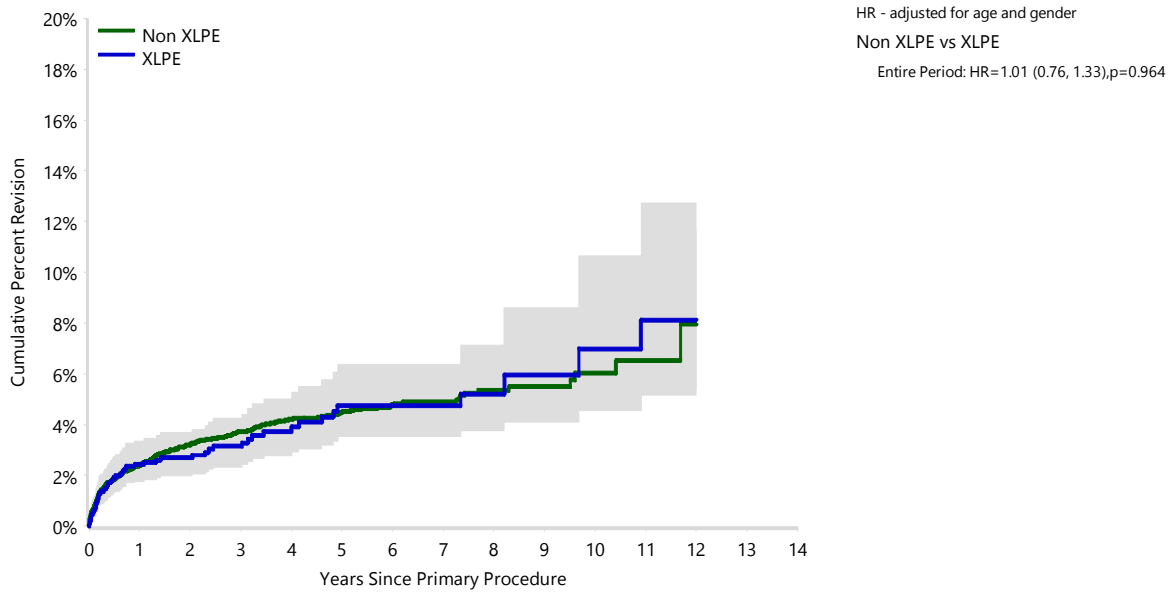
Note: Restricted to modern prostheses

Table ST67 Cumulative Percent Revision of Primary Total Reverse Shoulder Replacement by Polyethylene Type (Primary Diagnosis Rotator Cuff Arthropathy)

Polyethylene Type	N Revised	N Total	1 Yr	3 Yrs	5 Yrs	7 Yrs	10 Yrs	14 Yrs
Non XLPE	369	10059	2.4 (2.1, 2.7)	3.7 (3.3, 4.2)	4.5 (4.0, 5.0)	4.9 (4.4, 5.5)	6.0 (5.1, 7.2)	
XLPE	56	1596	2.4 (1.8, 3.4)	3.1 (2.3, 4.2)	4.7 (3.5, 6.4)	4.7 (3.5, 6.4)	7.0 (4.5, 10.7)	
TOTAL	425	11655						

Note: Restricted to modern prostheses

Figure ST51 Cumulative Percent Revision of Primary Total Reverse Shoulder Replacement by Polyethylene Type (Primary Diagnosis Rotator Cuff Arthropathy)



Number at Risk	0 Yr	1 Yr	3 Yrs	5 Yrs	7 Yrs	10 Yrs	14 Yrs
Non XLPE	10059	8193	4839	2575	1251	251	2
XLPE	1596	1229	693	421	236	86	4

Note: Restricted to modern prostheses

Figure ST52 Cumulative Incidence Revision Diagnosis of Primary Total Reverse Shoulder Replacement by Polyethylene Type (Primary Diagnosis Rotator Cuff Arthropathy)

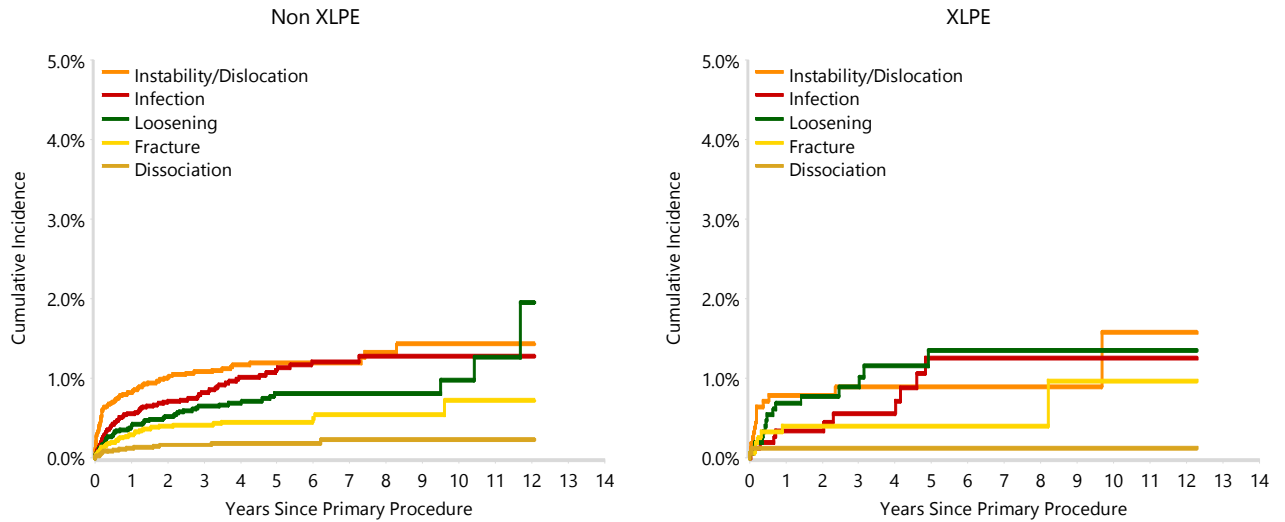


Table ST68 Primary Total Reverse Shoulder Replacement by Polyethylene Type and Prosthesis Combination (Primary Diagnosis Rotator Cuff Arthropathy)

Prosthesis Combination	Non XLPE			XLPE			TOTAL		
	N	Row%	Col%	N	Row%	Col%	N	Row%	Col%
SMR/SMR L1	2004	75.8	94.4	639	24.2	97.6	2643	100.0	95.1
Altivare Reverse/RSP	100	87.7	4.7	14	12.3	2.1	114	100.0	4.1
SMR/SMR Axioma	19	90.5	0.9	2	9.5	0.3	21	100.0	0.8
TOTAL	2123	76.4	100.0	655	23.6	100.0	2778	100.0	100.0

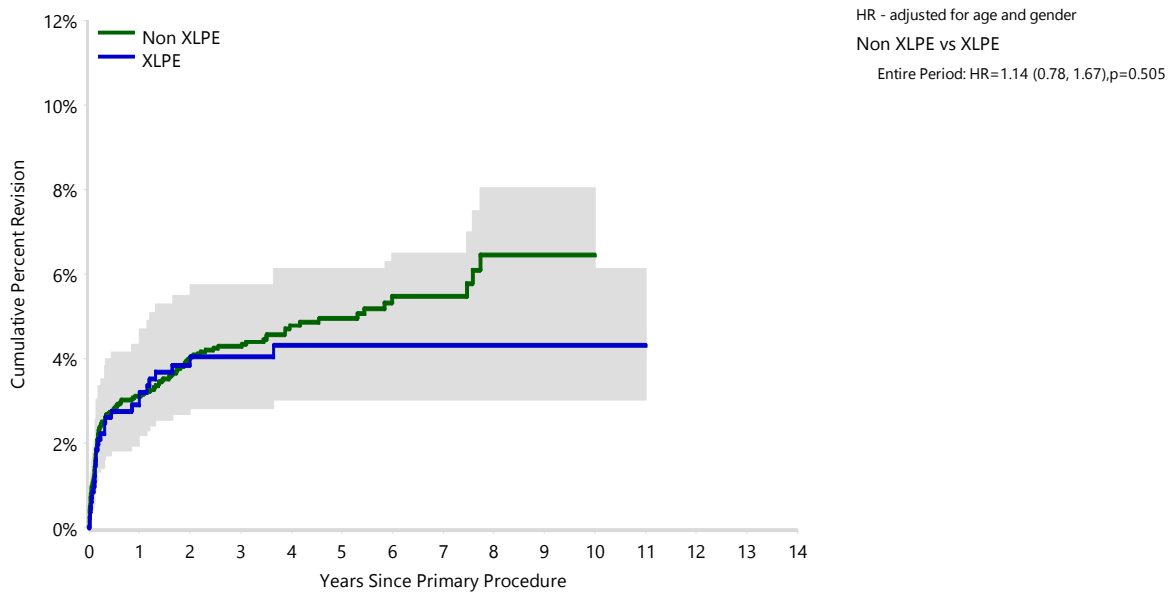
Note: Restricted to modern prostheses

Table ST79 Cumulative Percent Revision of Primary Total Reverse Shoulder Replacement by Polyethylene Type (Primary Diagnosis Fracture)

Polyethylene Type	N Revised	N Total	1 Yr	3 Yrs	5 Yrs	7 Yrs	10 Yrs	14 Yrs
Non XLPE	171	4035	3.1 (2.6, 3.7)	4.3 (3.7, 5.0)	4.9 (4.2, 5.8)	5.5 (4.6, 6.5)	6.5 (5.2, 8.1)	
XLPE	31	831	3.2 (2.2, 4.7)	4.0 (2.8, 5.7)	4.3 (3.0, 6.1)	4.3 (3.0, 6.1)	4.3 (3.0, 6.1)	
TOTAL	202	4866						

Note: Restricted to modern prostheses

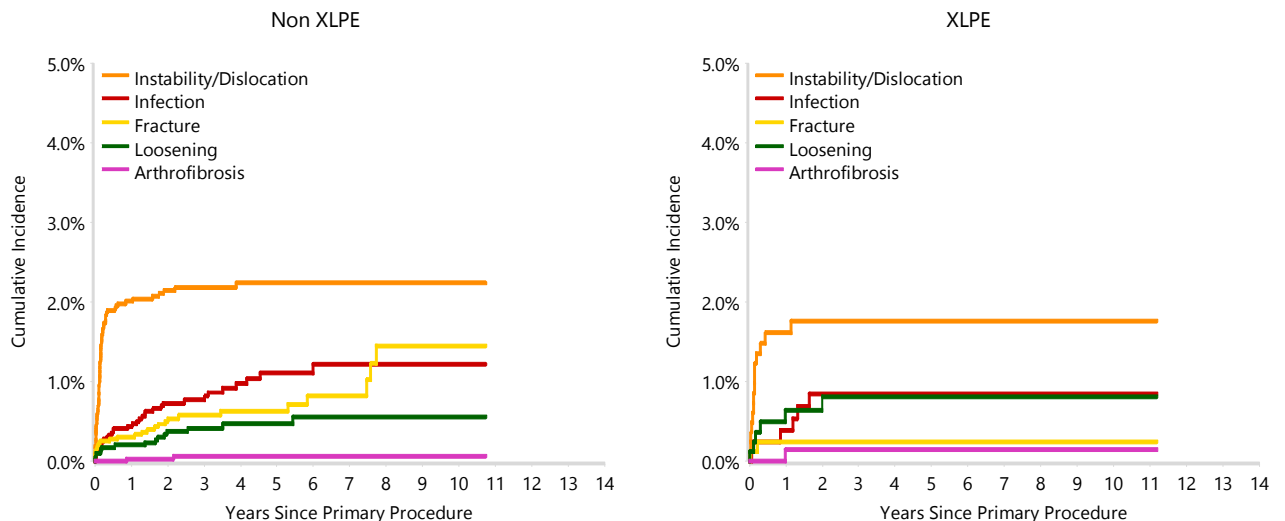
Figure ST63 Cumulative Percent Revision of Primary Total Reverse Shoulder Replacement by Polyethylene Type (Primary Diagnosis Fracture)



Number at Risk	0 Yr	1 Yr	3 Yrs	5 Yrs	7 Yrs	10 Yrs	14 Yrs
Non XLPE	4035	3189	1863	943	391	70	1
XLPE	831	640	409	242	142	51	0

Note: Restricted to modern prostheses

Figure ST64 Cumulative Incidence Revision Diagnosis of Primary Total Reverse Shoulder Replacement by Polyethylene Type (Primary Diagnosis OA)



Note: Restricted to modern prostheses

Table ST80 Primary Total Reverse Shoulder Replacement by Polyethylene Type and Prosthesis Combination (Primary Diagnosis Fracture)

Prosthesis Combination	Non XLPE			XLPE			TOTAL		
	N	Row%	Col%	N	Row%	Col%	N	Row%	Col%
SMR/SMR L1	871	67.2	96.2	425	32.8	99.1	1296	100.0	97.2
AltiVate Reverse/RSP	28	96.6	3.1	1	3.4	0.2	29	100.0	2.2
SMR/SMR Axioma	6	66.7	0.7	3	33.3	0.7	9	100.0	0.7
TOTAL	905	67.8	100.0	429	32.2	100.0	1334	100.0	100.0

Note: Restricted to modern prostheses