



2018 Annual Report – Hip, Knee and Shoulder Arthroplasty

ERRATUM #1

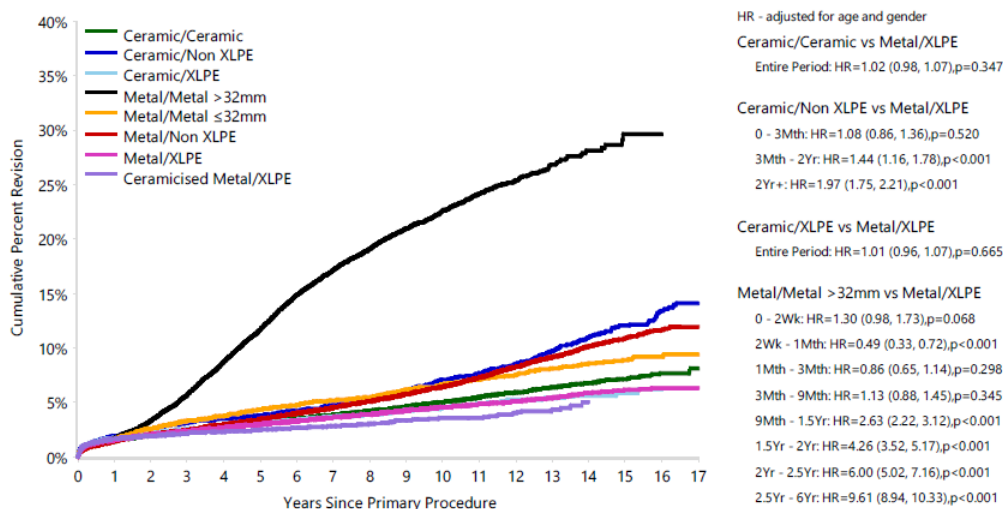
Amended 5 October 2018

Erratum for the PRINTED version of the 2018 Annual Report – Hip Knee and Shoulder Arthroplasty

Primary Total Hip Replacement

Hazard Ratios were not displayed correctly
Original Figure:

Figure HT27 Cumulative Percent Revision of Primary Total Conventional Hip Replacement by Bearing Surface (Primary Diagnosis OA)



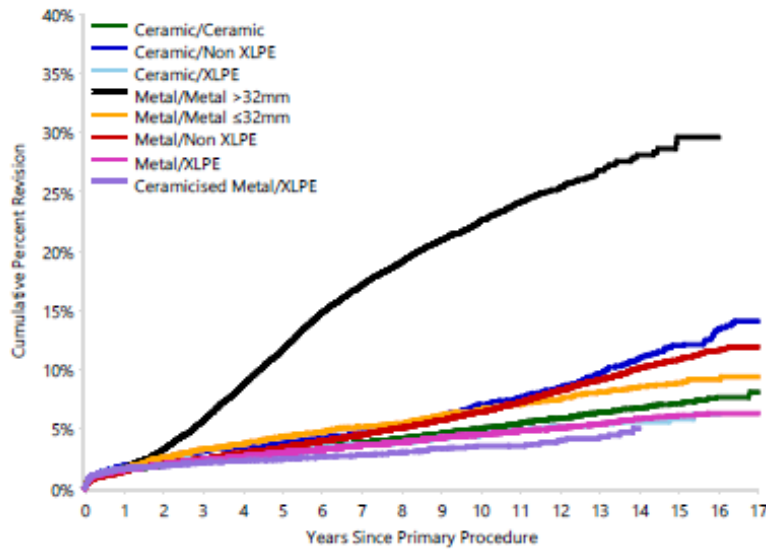
Number at Risk	0 Yr	1 Yr	3 Yrs	5 Yrs	10 Yrs	15 Yrs	16 Yrs
Ceramic/Ceramic	84474	77231	62436	46826	17521	3296	1317
Ceramic/Non XLPE	6793	6109	5073	4348	2988	1148	720
Ceramic/XLPE	61666	48568	29420	17839	4281	387	124
Metal/Metal >32mm	14421	14062	13217	11975	5535	134	69
Metal/Metal ≤32mm	5146	5022	4823	4560	3239	1012	458
Metal/Non XLPE	34837	33475	30998	28111	18122	5619	2841
Metal/XLPE	143028	127659	99169	72445	22917	2163	665
Ceramicised Metal/XLPE	20327	17783	13367	9350	2855	0	0

Note: Only bearing surfaces with over 500 procedures have been listed

CORRECTION

Figure with correctly displayed Hazard Ratio:

Figure HT27 Cumulative Percent Revision of Primary Total Conventional Hip Replacement by Bearing Surface (Primary Diagnosis OA)



HR - adjusted for age and gender

Ceramic/Ceramic vs Metal/XLPE
Entire Period: HR=1.02 (0.98, 1.07),p=0.347

Ceramic/Non XLPE vs Metal/XLPE
0 - 3Mth: HR=1.08 (0.86, 1.36),p=0.520
3Mth - 2Yr: HR=1.44 (1.16, 1.78),p<0.001
2Yr+: HR=1.97 (1.75, 2.21),p<0.001

Ceramic/XLPE vs Metal/XLPE
Entire Period: HR=1.01 (0.96, 1.07),p=0.665

Metal/Metal >32mm vs Metal/XLPE
0 - 2Wk: HR=1.30 (0.98, 1.73),p=0.068
2Wk - 1Mth: HR=0.49 (0.33, 0.72),p<0.001
1Mth - 3Mth: HR=0.86 (0.65, 1.14),p=0.298
3Mth - 9Mth: HR=1.13 (0.88, 1.45),p=0.345
9Mth - 1.5Yr: HR=2.63 (2.22, 3.12),p<0.001
1.5Yr - 2Yr: HR=4.26 (3.52, 5.17),p<0.001
2Yr - 2.5Yr: HR=6.00 (5.02, 7.16),p<0.001
2.5Yr - 6Yr: HR=9.61 (8.94, 10.33),p<0.001
6Yr - 6.5Yr: HR=8.40 (6.87, 10.26),p<0.001
6.5Yr - 8Yr: HR=7.96 (6.98, 9.06),p<0.001
8Yr - 9.5Yr: HR=5.30 (4.57, 6.15),p<0.001
9.5Yr+: HR=4.91 (4.26, 5.67),p<0.001

Metal/Metal <=32mm vs Metal/XLPE
Entire Period: HR=1.35 (1.21, 1.50),p<0.001

Metal/Non XLPE vs Metal/XLPE
0 - 1Mth: HR=0.75 (0.64, 0.88),p<0.001
1Mth - 6Mth: HR=0.94 (0.81, 1.09),p=0.381
6Mth - 1.5Yr: HR=1.42 (1.24, 1.62),p<0.001
1.5Yr - 2.5Yr: HR=1.15 (0.97, 1.37),p=0.114
2.5Yr - 6Yr: HR=1.60 (1.45, 1.77),p<0.001
6Yr - 11Yr: HR=1.95 (1.78, 2.14),p<0.001
11Yr+: HR=2.49 (2.19, 2.84),p<0.001

Ceramicised Metal/XLPE vs Metal/XLPE
0 - 3Mth: HR=1.10 (0.96, 1.27),p=0.150
3Mth+: HR=0.67 (0.60, 0.76),p<0.001

Number at Risk	0 Yr	1 Yr	3 Yrs	5 Yrs	10 Yrs	15 Yrs	17 Yrs
Ceramic/Ceramic	84474	77231	62436	46826	17521	3296	241
Ceramic/Non XLPE	6793	6109	5073	4348	2988	1148	294
Ceramic/XLPE	61666	48568	29420	17839	4281	387	14
Metal/Metal >32mm	14421	14062	13217	11975	5535	134	18
Metal/Metal <=32mm	5146	5022	4823	4560	3239	1012	78
Metal/Non XLPE	34837	33475	30998	28111	18122	5619	821
Metal/XLPE	143028	127659	99169	72445	22917	2163	81
Ceramicised Metal/XLPE	20327	17783	13367	9350	2855	0	0

Note: Only bearing surfaces with over 500 procedures have been listed