

GMK-UNI/GMK-UNI Unicompartmental Knee Investigation

Note: This analysis compares the GMK-UNI/GMK-UNI femoral/tibial combination with all other unicompartmental knee prostheses.

This combination has been identified as having a significantly higher rate of revision. For a detailed explanation of the process used by the Registry that results in identification of prostheses that have a higher than anticipated rate of revision please refer to the Prostheses with Higher than Anticipated Rates of Revision chapter of the most recent AOANJRR Annual Report, <https://aoanjrr.sahmri.com/annual-reports-2024>.

Note: Procedures using prostheses with no recorded use in 2023 are excluded from the comparator.

TABLE 1

Revision Rate of Primary Unicompartmental Knee Replacement

The revision rate of the GMK-UNI/GMK-UNI unicompartmental knee combination is compared to all other unicompartmental knee prostheses.

Table 1: Revision Rates of Primary Unicompartmental Knee Replacement

Component	N Revised	N Total	Obs. Years	Revisions/100 Obs. Yrs (95% CI)
GMK-UNI/GMK-UNI	45	168	1125	4.00 (2.92, 5.35)
Other Unicompartmental Knee	5027	51046	373593	1.35 (1.31, 1.38)
TOTAL	5072	51214	374718	1.35 (1.32, 1.39)

Note: Prostheses no longer used in 2023 are excluded from the comparator.

TABLE 2

Yearly Cumulative Percent Revision of Primary Unicompartmental Knee Replacement

The yearly cumulative percent revision of the GMK-UNI/GMK-UNI unicompartmental knee combination is compared to all other unicompartmental knee prostheses.

Table 2: Yearly Cumulative Percent Revision of Primary Unicompartmental Knee Replacement

CPR	1 Yr	2 Yrs	3 Yrs	4 Yrs	5 Yrs	6 Yrs	7 Yrs	8 Yrs
GMK-UNI/GMK-UNI	6.5 (3.7, 11.5)	11.9 (7.9, 17.9)	17.4 (12.4, 24.1)	20.5 (15.1, 27.5)	24.5 (18.6, 31.8)	27.5 (21.2, 35.2)	28.4 (22.0, 36.2)	28.4 (22.0, 36.2)
Other Unicompartmental Knee	1.9 (1.8, 2.0)	3.4 (3.3, 3.6)	4.4 (4.2, 4.6)	5.3 (5.1, 5.5)	6.1 (5.9, 6.3)	7.0 (6.7, 7.2)	8.0 (7.7, 8.3)	9.0 (8.7, 9.3)

CPR	9 Yrs	10 Yrs	11 Yrs	12 Yrs	13 Yrs	14 Yrs	15 Yrs	16 Yrs
GMK-UNI/GMK-UNI	28.4 (22.0, 36.2)							
Other Unicompartmental Knee	10.2 (9.9, 10.5)	11.3 (11.0, 11.7)	12.6 (12.2, 13.0)	13.9 (13.5, 14.4)	15.4 (14.9, 15.9)	16.9 (16.4, 17.5)	18.4 (17.8, 19.0)	19.9 (19.3, 20.6)

CPR	17 Yrs	18 Yrs	19 Yrs	20 Yrs	21 Yrs	22 Yrs	23 Yrs
GMK-UNI/GMK-UNI							
Other Unicompartmental Knee	21.6 (20.9, 22.4)	23.4 (22.6, 24.2)	25.1 (24.2, 26.0)	27.0 (26.0, 28.1)	29.0 (27.8, 30.3)	30.6 (29.1, 32.2)	31.3 (29.5, 33.1)

Note: Prostheses no longer used in 2023 are excluded from the comparator.

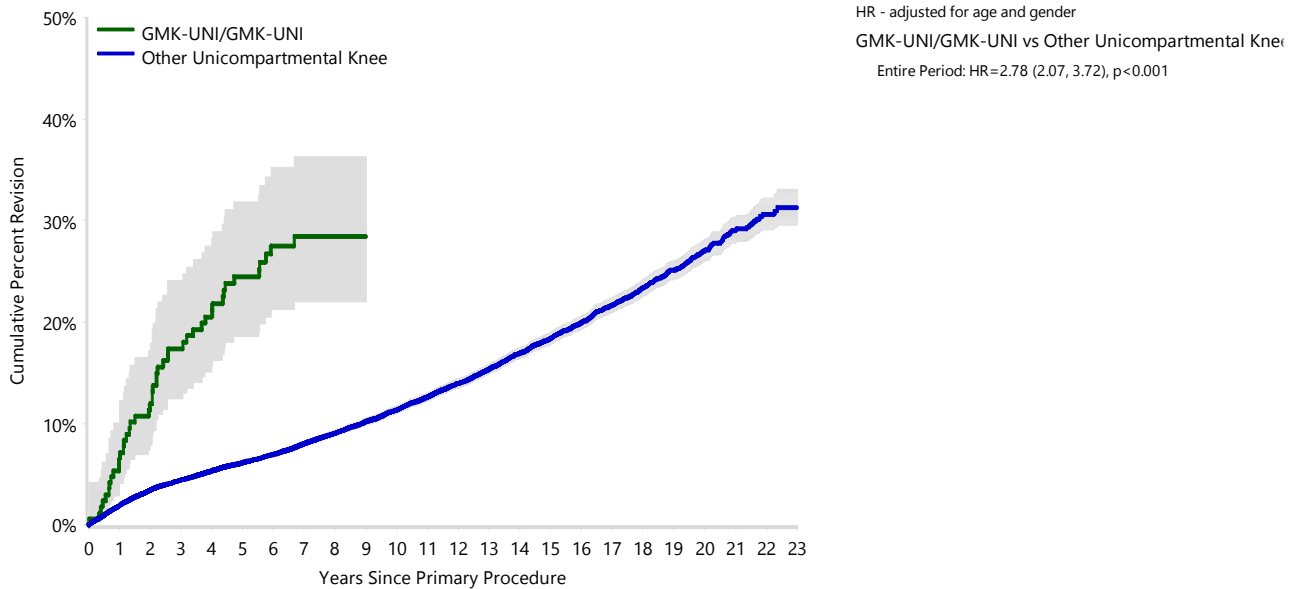
FIGURE 1

Yearly Cumulative Percent Revision of Primary Unicompartmental Knee Replacement

The yearly cumulative percent revision of the GMK-UNI/GMK-UNI unicompartmental knee combination is compared to all other unicompartmental knee prostheses. In addition, hazard ratios are reported.

Hazard ratios are reported for specific time periods during which the hazard ratio is constant. This is done to enable more specific and valid comparisons of the risk of revision over time. The pattern of variation in risk has important implications with respect to the underlying reasons for any difference.

Figure 1: Cumulative Percent Revision of Primary Unicompartmental Knee Replacement



Number at Risk	0 Yr	1 Yr	2 Yrs	3 Yrs	4 Yrs	5 Yrs	6 Yrs	7 Yrs	8 Yrs	9 Yrs	10 Yrs	11 Yrs
GMK-UNI/GMK-UNI	168	157	146	134	123	114	86	78	67	53	37	22
Other Unicompartmental Knee	51046	46421	42133	38023	34005	29907	25908	22127	19010	16489	14286	12363

Number at Risk	12 Yrs	13 Yrs	14 Yrs	15 Yrs	16 Yrs	17 Yrs	18 Yrs	19 Yrs	20 Yrs	21 Yrs	22 Yrs	23 Yrs
GMK-UNI/GMK-UNI	9	9	7	3	0	0	0	0	0	0	0	0
Other Unicompartmental Knee	10629	8938	7315	5932	4651	3560	2650	1940	1337	807	346	78

Note: Prostheses no longer used in 2023 are excluded from the comparator.

TABLE 3**Primary Diagnosis for Revised Primary Unicompartmental Knee Replacement**

This table identifies the diagnosis of the primary procedure which was subsequently revised. This information is provided as there is a variation on outcome depending on the primary diagnosis. It is therefore important when considering the reasons for a higher than anticipated rate of revision that there is identification of the primary diagnosis. This information should be compared to the primary diagnosis for the revisions of all other unicompartmental knee prostheses.

Table 3: Primary Diagnosis for Revised Primary Unicompartmental Knee Replacement

Primary Diagnosis	GMK-UNI/GMK-UNI		Other Unicompartmental Knee	
	Number	Percent	Number	Percent
Osteoarthritis	45	100.0	4978	99.0
Osteonecrosis			30	0.6
Rheumatoid Arthritis			11	0.2
Other Inflammatory Arthritis			5	0.1
Fracture			2	0.0
Tumour			1	0.0
TOTAL	45	100.0	5027	100.0

Note: Prostheses no longer used in 2023 are excluded from the comparator.

TABLE 4

Reasons for Revision

This is reported in two ways: a percentage of primary procedures revised and as a percentage of all revision procedures.

% Primaries Revised: This shows the proportional contribution of each revision diagnosis as a percentage of the total number of primary procedures. This percentage can be used to approximate the risk of being revised for that diagnosis. Differing percentages between groups, with the same distribution of follow up time, may identify problems of concern.

% Revisions: The number of revisions for each diagnosis is expressed as a percentage of the total number of revisions. This shows the distribution of reasons for revision within a group but cannot be used as a comparison between groups.

Table 4: Primary Unicompartmental Knee Replacement - Reason for Revision (Follow-up Limited to 15.2 Years)

Revision Diagnosis	GMK-UNI/GMK-UNI			Other Unicompartmental Knee		
	Number	% Primaries Revised	% Revisions	Number	% Primaries Revised	% Revisions
Progression Of Disease	12	7.1	26.7	1665	3.3	35.8
Loosening	23	13.7	51.1	1499	2.9	32.2
Pain	2	1.2	4.4	353	0.7	7.6
Infection	2	1.2	4.4	266	0.5	5.7
Bearing Dislocation				185	0.4	4.0
Fracture	1	0.6	2.2	149	0.3	3.2
Instability	1	0.6	2.2	94	0.2	2.0
Lysis	1	0.6	2.2	82	0.2	1.8
Malalignment				63	0.1	1.4
Wear Tibial Insert	1	0.6	2.2	61	0.1	1.3
Patellofemoral Pain				31	0.1	0.7
Implant Breakage Tibial Insert				29	0.1	0.6
Incorrect Sizing	1	0.6	2.2	28	0.1	0.6
Prosthesis Dislocation				27	0.1	0.6
Implant Breakage Tibial				17	0.0	0.4
Osteonecrosis				13	0.0	0.3
Metal Related Pathology				12	0.0	0.3
Wear Tibial				12	0.0	0.3
Synovitis				11	0.0	0.2
Arthrofibrosis				9	0.0	0.2
Implant Breakage Femoral	1	0.6	2.2	4	0.0	0.1
Wear Femoral				4	0.0	0.1
Patella Erosion				2	0.0	0.0
Tumour				1	0.0	0.0
Other				37	0.1	0.8
N Revision	45	26.8	100.0	4654	9.1	100.0
N Primary	168			51046		

Note: This table is restricted to revisions within 15.2 years for all groups to allow a time-matched comparison of revisions.

Note: Prostheses no longer used in 2023 are excluded from the comparator.

FIGURE 2

Cumulative Incidence Revision Diagnosis of Primary Unicompartmental Knee Replacement

This figure details the cumulative incidence of the most common reasons for revision. The five most common reasons for revision are included as long as each of these reasons account for more than 10 procedures or at least 5% of all revisions for the GMK-UNI/GMK-UNI unicompartmental knee combination. A comparative graph is provided of the cumulative incidence for the same reasons for revisions for all other unicompartmental knee prostheses.

Figure 2: Cumulative Incidence Revision Diagnosis for Primary Unicompartmental Knee Replacement

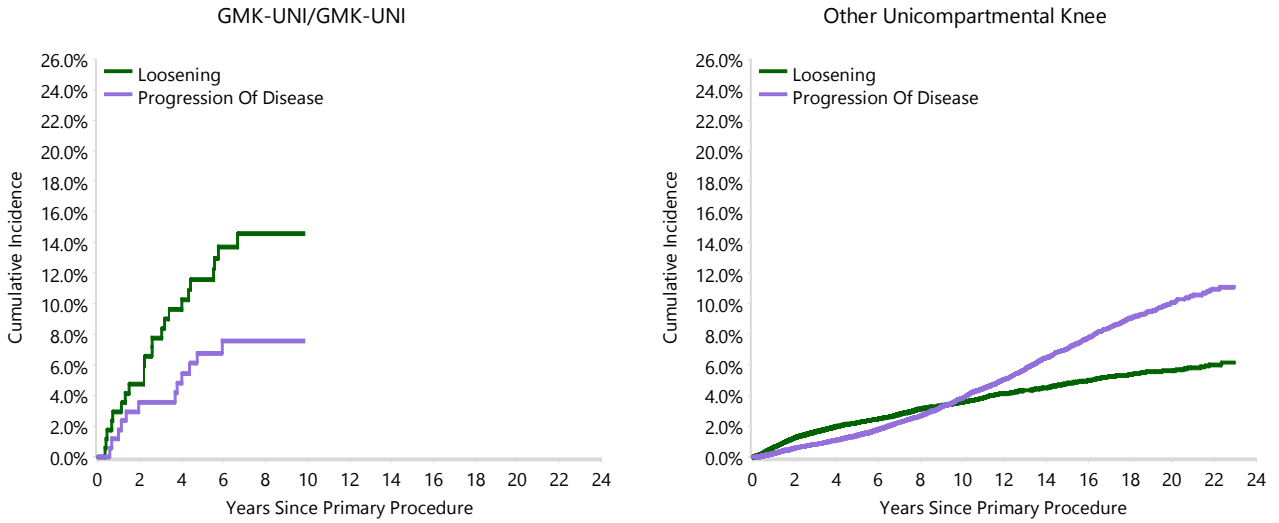


TABLE 5

Type of Revision Performed for Primary Unicompartmental Knee Replacement

This analysis identifies the components used in the revision of the GMK-UNI/GMK-UNI unicompartmental knee combination and compares it to the components used in the revision of all other unicompartmental knee prostheses.

The reason this analysis is undertaken is to identify whether there is one or more components which are being replaced that differ from the components replaced for revisions of all other unicompartmental knee prostheses i.e. is there a difference in the type of revision undertaken for the GMK-UNI/GMK-UNI unicompartmental knee combination compared to all other unicompartmental knee prostheses.

Table 5: Primary Unicompartmental Knee Replacement - Type of Revision (Follow-up Limited to 15.2 Years)

Type of Revision	GMK-UNI/GMK-UNI		Other Unicompartmental Knee	
	Number	Percent	Number	Percent
TKR (Tibial/Femoral)	40	88.9	3871	83.2
Uni Tibial Component	1	2.2	94	2.0
Uni Femoral Component			52	1.1
Cement Spacer			39	0.8
UKR (Uni Tibial/Uni Femoral)	1	2.2	35	0.8
Patella/Trochlear Resurfacing			20	0.4
Removal of Prostheses			5	0.1
Femoral Component			4	0.1
Reinsertion of Components			4	0.1
Tibial Component	1	2.2	1	0.0
N Major	43	95.6	4125	88.6
Uni Insert Only	2	4.4	528	11.3
Patella Only			1	0.0
N Minor	2	4.4	529	11.4
TOTAL	45	100.0	4654	100.0

Note: This table is restricted to revisions within 15.2 years for all groups to allow a time-matched comparison of revisions.

Note: Prostheses no longer used in 2023 are excluded from the comparator.

TABLE 6**Revision Rates of GMK-UNI/GMK-UNI Primary Unicompartmental Knee Replacement by Fixation**

This analysis is provided as some prostheses have more than one fixation option. Additionally there are prostheses where an alternative to the recommended approach to fixation was used e.g. a cementless prosthesis that has been cemented or vice-versa.

Table 6: Revised Number of GMK-UNI/GMK-UNI Primary Unicompartmental Knee Replacement by Fixation

Fixation	N Revised	N Total
Cemented	45	168
TOTAL	45	168

TABLE 7

Revision Rates of Primary Unicompartmental Knee Replacement by State

This enables a state by state variation to be identified for the GMK-UNI/GMK-UNI unicompartmental knee combination and provides the comparative data for each of the states for all other unicompartmental knee prostheses.

The purpose of this analysis is to determine if the higher than anticipated rate of revision has widespread distribution between states. If there is widespread distribution then the reason for the higher than anticipated rate of revision is unlikely to be surgeon specific. If the prosthesis has been used in only a small number of states it is not possible to distinguish if the higher than anticipated rate of revision is related to the prosthesis, surgeon, technique or patient.

Table 7: Revised Number of Primary Unicompartmental Knee Replacement by State

Component	State	N Revised	N Total
GMK-UNI/GMK-UNI	NSW	29	102
	VIC	2	6
	QLD	4	9
	SA	10	51
Other Unicompartmental Knee	NSW	1414	12295
	VIC	1018	11777
	QLD	922	10501
	WA	652	8073
	SA	708	5394
	TAS	174	1971
	ACT/NT	139	1035
TOTAL		5072	51214

Note: Prostheses no longer used in 2023 are excluded from the comparator.

TABLE 8**Number of Revisions of GMK-UNI/GMK-UNI Primary Unicompartmental Knee Replacement by Year of Implant**

This analysis details the number of prostheses reported each year to the Registry for the GMK-UNI/GMK-UNI unicompartmental knee combination. It also provides the subsequent number of revisions of the primaries reported in that year.

Primary procedures performed in later years have had less follow up time therefore the number revised is expected to be less than the number revised in earlier years. For example, a primary procedure performed in 2023 has a maximum of one year to be revised, whereas a primary procedure performed in 2021 has a maximum of three years to be revised.

Table 8: Number of Revisions of GMK-UNI/GMK-UNI Primary Unicompartmental Knee Replacement by Year of Implant

Year of Implant	Number Revised	Total Number
2008	0	5
2009	6	10
2010	0	2
2012	6	21
2013	5	22
2014	1	16
2015	7	19
2016	6	17
2017	3	12
2018	9	29
2019	0	3
2020	2	8
2021	0	3
2022	0	1
TOTAL	45	168

TABLE 9**Revision Rates of GMK-UNI/GMK-UNI Primary Unicompartmental Knee Replacement by Catalogue Number Range**

Many prostheses have a number of catalogue ranges. The catalogue range is specific to particular design features; more than one catalogue range usually indicates a minor difference in design in a particular GMK-UNI/GMK-UNI prosthesis.

This analysis has been undertaken to determine if the revision rate varies according to the catalogue number range.

Model	Catalogue Range	Catalogue Description	Cement
Femoral			
GMK-UNI	02080001-02080004	GMK-UNI CEMENTED FEMUR	YES
Tibial			
GMK-UNI	0208TF1LMRL-0208TF5RMLL	GMK-UNI FIXED TIBIA BASEPLATE	YES

Table 9: Revised Number of GMK-UNI/GMK-UNI Primary Unicompartmental Knee Replacement by Catalogue Number Range

Femoral Range	Tibial Range	N Revised	N Total
02080001-02080004	0208TF1LMRL-0208TF5RMLL	45	168
TOTAL		45	168