

Cormet/Cormet Total Resurfacing Hip Investigation

Note: This analysis compares the Cormet/Cormet head/acetabular combination with all other total resurfacing hip prostheses.

This combination has been identified as having a significantly higher rate of revision. For a detailed explanation of the process used by the Registry that results in identification of prostheses that have a higher than anticipated rate of revision please refer to the Prostheses with Higher than Anticipated Rates of Revision chapter of the most recent AOANJRR Annual Report, <https://aoanjrr.sahmri.com/annual-reports-2024>.

Note: Procedures using prostheses with no recorded use in 2023 are excluded from the comparator.

TABLE 1

Revision Rate of Primary Total Resurfacing Hip Replacement

The revision rate of the Cormet/Cormet total resurfacing hip combination is compared to all other total resurfacing hip prostheses.

Table 1: Revision Rates of Primary Total Resurfacing Hip Replacement

Component	N Revised	N Total	Obs. Years	Revisions/100 Obs. Yrs (95% CI)
Cormet/Cormet	148	626	8702	1.70 (1.44, 2.00)
Other Total Resurfacing Hip	1245	15869	201458	0.62 (0.58, 0.65)
TOTAL	1393	16495	210160	0.66 (0.63, 0.70)

Note: Prostheses no longer used in 2023 are excluded from the comparator.

TABLE 2

Yearly Cumulative Percent Revision of Primary Total Resurfacing Hip Replacement

The yearly cumulative percent revision of the Cormet/Cormet total resurfacing hip combination is compared to all other total resurfacing hip prostheses.

Table 2: Yearly Cumulative Percent Revision of Primary Total Resurfacing Hip Replacement

CPR	1 Yr	2 Yrs	3 Yrs	4 Yrs	5 Yrs	6 Yrs	7 Yrs	8 Yrs
Cormet/Cormet	2.1 (1.2, 3.6)	4.2 (2.9, 6.1)	5.8 (4.2, 7.9)	7.9 (6.0, 10.3)	9.8 (7.7, 12.5)	12.1 (9.8, 15.0)	13.6 (11.1, 16.6)	14.4 (11.9, 17.5)
Other Total Resurfacing Hip	1.4 (1.2, 1.5)	1.9 (1.7, 2.1)	2.3 (2.1, 2.5)	2.7 (2.5, 3.0)	3.2 (2.9, 3.5)	3.8 (3.5, 4.1)	4.4 (4.1, 4.7)	4.9 (4.6, 5.3)

CPR	9 Yrs	10 Yrs	11 Yrs	12 Yrs	13 Yrs	14 Yrs	15 Yrs	16 Yrs
Cormet/Cormet	15.4 (12.8, 18.5)	17.3 (14.5, 20.5)	18.5 (15.6, 21.8)	20.3 (17.4, 23.8)	21.6 (18.5, 25.1)	22.0 (18.9, 25.5)	23.0 (19.8, 26.6)	23.5 (20.3, 27.2)
Other Total Resurfacing Hip	5.4 (5.1, 5.8)	6.2 (5.8, 6.6)	6.7 (6.3, 7.1)	7.2 (6.8, 7.7)	7.9 (7.4, 8.4)	8.4 (7.9, 8.9)	9.0 (8.5, 9.5)	9.5 (9.0, 10.0)

CPR	17 Yrs	18 Yrs	19 Yrs	20 Yrs	21 Yrs	22 Yrs	23 Yrs
Cormet/Cormet	23.9 (20.6, 27.6)	25.1 (21.6, 29.0)	26.3 (22.5, 30.5)	27.2 (23.1, 31.9)			
Other Total Resurfacing Hip	10.0 (9.4, 10.6)	10.4 (9.8, 11.0)	10.7 (10.1, 11.4)	11.2 (10.6, 11.9)	11.6 (11.0, 12.4)	12.0 (11.2, 12.7)	12.2 (11.3, 13.1)

Note: Prostheses no longer used in 2023 are excluded from the comparator.

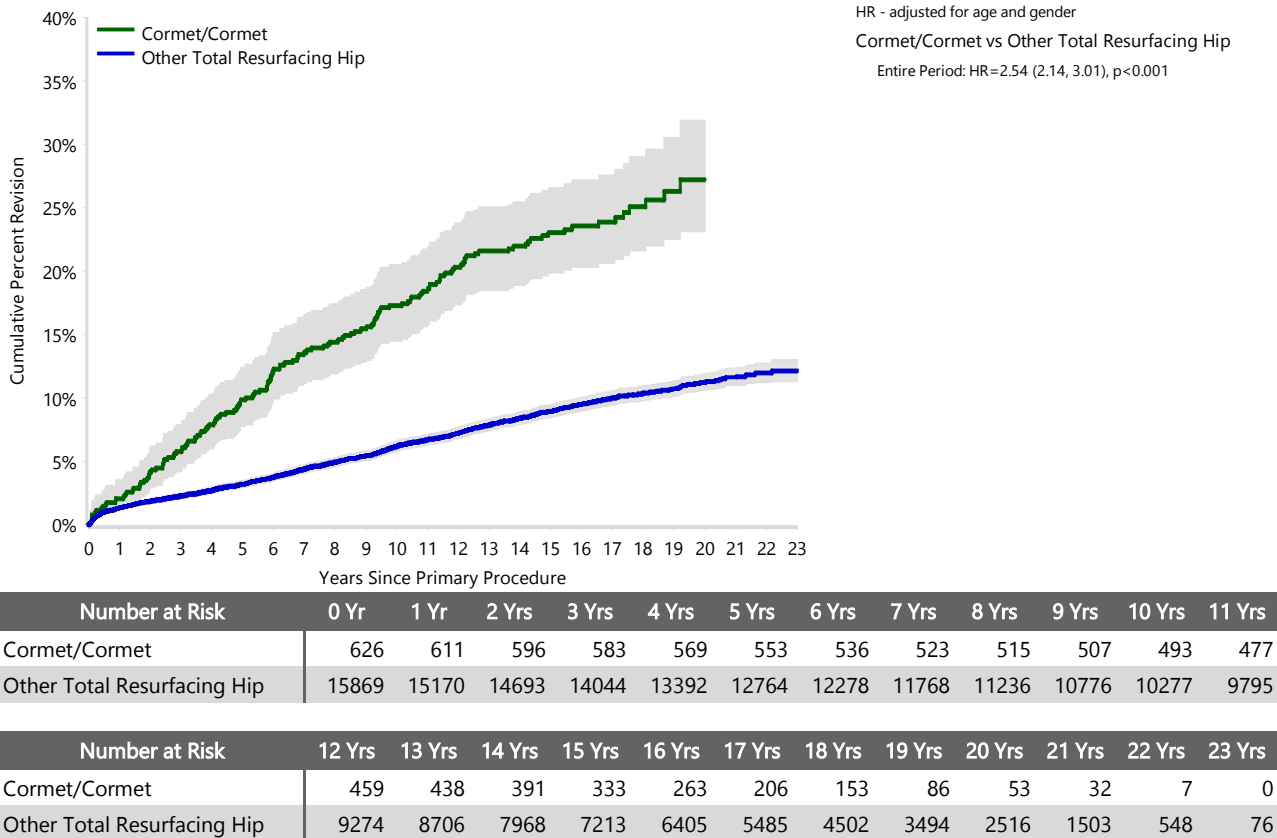
FIGURE 1

Yearly Cumulative Percent Revision of Primary Total Resurfacing Hip Replacement

The yearly cumulative percent revision of the Cormet/Cormet total resurfacing hip combination is compared to all other total resurfacing hip prostheses. In addition, hazard ratios are reported.

Hazard ratios are reported for specific time periods during which the hazard ratio is constant. This is done to enable more specific and valid comparisons of the risk of revision over time. The pattern of variation in risk has important implications with respect to the underlying reasons for any difference.

Figure 1: Cumulative Percent Revision of Primary Total Resurfacing Hip Replacement



Note: Prostheses no longer used in 2023 are excluded from the comparator.

TABLE 3**Primary Diagnosis for Revised Primary Total Resurfacing Hip Replacement**

This table identifies the diagnosis of the primary procedure which was subsequently revised. This information is provided as there is a variation on outcome depending on the primary diagnosis. It is therefore important when considering the reasons for a higher than anticipated rate of revision that there is identification of the primary diagnosis. This information should be compared to the primary diagnosis for the revisions of all other total resurfacing hip prostheses.

Table 3: Primary Diagnosis for Revised Primary Total Resurfacing Hip Replacement

Primary Diagnosis	Cormet/Cormet		Other Total Resurfacing Hip	
	Number	Percent	Number	Percent
Osteoarthritis	132	89.2	1141	91.6
Developmental Dysplasia	11	7.4	50	4.0
Osteonecrosis	3	2.0	37	3.0
Other Inflammatory Arthritis	2	1.4	10	0.8
Rheumatoid Arthritis			6	0.5
Other			1	0.1
TOTAL	148	100.0	1245	100.0

Note: Prostheses no longer used in 2023 are excluded from the comparator.

TABLE 4

Reasons for Revision

This is reported in two ways: a percentage of primary procedures revised and as a percentage of all revision procedures.

% Primaries Revised: This shows the proportional contribution of each revision diagnosis as a percentage of the total number of primary procedures. This percentage can be used to approximate the risk of being revised for that diagnosis. Differing percentages between groups, with the same distribution of follow up time, may identify problems of concern.

% Revisions: The number of revisions for each diagnosis is expressed as a percentage of the total number of revisions. This shows the distribution of reasons for revision within a group but cannot be used as a comparison between groups.

Table 4: Primary Total Resurfacing Hip Replacement - Reason for Revision

Revision Diagnosis	Cormet/Cormet			Other Total Resurfacing Hip		
	Number	% Primaries Revised	% Revisions	Number	% Primaries Revised	% Revisions
Loosening	53	8.5	35.8	331	2.1	26.6
Metal Related Pathology	31	5.0	20.9	263	1.7	21.1
Fracture	26	4.2	17.6	244	1.5	19.6
Lysis	11	1.8	7.4	132	0.8	10.6
Infection	8	1.3	5.4	83	0.5	6.7
Pain	9	1.4	6.1	72	0.5	5.8
Prosthesis Dislocation/Instability	6	1.0	4.1	32	0.2	2.6
Osteonecrosis	2	0.3	1.4	29	0.2	2.3
Malposition				19	0.1	1.5
Tumour				6	0.0	0.5
Progression Of Disease				4	0.0	0.3
Wear Acetabulum				3	0.0	0.2
Implant Breakage Acetabular				2	0.0	0.2
Leg Length Discrepancy	1	0.2	0.7	2	0.0	0.2
Heterotopic Bone				1	0.0	0.1
Implant Breakage Head	1	0.2	0.7			
Implant Breakage Stem				1	0.0	0.1
Incorrect Sizing				1	0.0	0.1
Synovitis				1	0.0	0.1
Other				19	0.1	1.5
N Revision	148	23.6	100.0	1245	7.8	100.0
N Primary	626			15869		

Note: Prostheses no longer used in 2023 are excluded from the comparator.

FIGURE 2

Cumulative Incidence Revision Diagnosis of Primary Total Resurfacing Hip Replacement

This figure details the cumulative incidence of the most common reasons for revision. The five most common reasons for revision are included as long as each of these reasons account for more than 10 procedures or at least 5% of all revisions for the Cormet/Cormet total resurfacing hip combination. A comparative graph is provided of the cumulative incidence for the same reasons for revisions for all other total resurfacing hip prostheses.

Figure 2: Cumulative Incidence Revision Diagnosis for Primary Total Resurfacing Hip Replacement

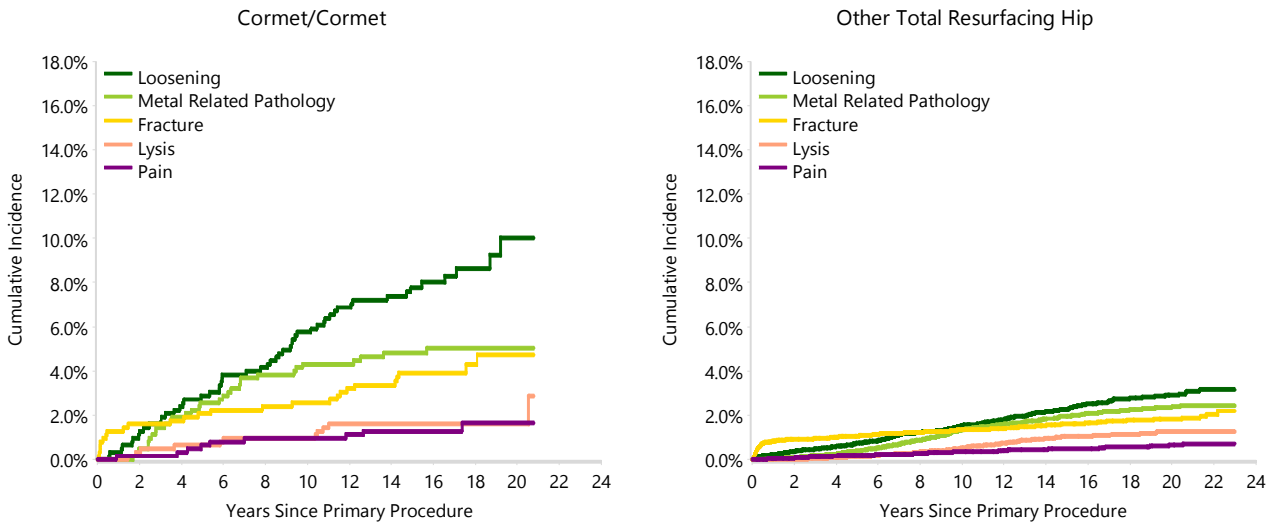


TABLE 5

Type of Revision Performed for Primary Total Resurfacing Hip Replacement

This analysis identifies the components used in the revision of the Cormet/Cormet total resurfacing hip combination and compares it to the components used in the revision of all other total resurfacing hip prostheses.

The reason this analysis is undertaken is to identify whether there is one or more components which are being replaced that differ from the components replaced for revisions of all other total resurfacing hip prostheses i.e. is there a difference in the type of revision undertaken for the Cormet/Cormet total resurfacing hip combination compared to all other total resurfacing hip prostheses.

Table 5: Primary Total Resurfacing Hip Replacement - Type of Revision

Type of Revision	Cormet/Cormet		Other Total Resurfacing Hip	
	Number	Percent	Number	Percent
THR (Femoral/Acetabular)	110	74.3	843	67.7
Femoral Component	30	20.3	328	26.3
Acetabular Component	3	2.0	37	3.0
Cement Spacer	5	3.4	28	2.2
Removal of Prostheses			7	0.6
N Major	148	100.0	1243	99.8
Head/Insert			1	0.1
Minor Components			1	0.1
N Minor			2	0.2
TOTAL	148	100.0	1245	100.0

Note: Prostheses no longer used in 2023 are excluded from the comparator.

TABLE 6

Revision Rates of Cormet/Cormet Primary Total Resurfacing Hip Replacement by Fixation

This analysis is provided as some prostheses have more than one fixation option. Additionally there are prostheses where an alternative to the recommended approach to fixation was used e.g. a cementless prosthesis that has been cemented or vice-versa.

Table 6: Revised Number of Cormet/Cormet Primary Total Resurfacing Hip Replacement by Fixation

Fixation	N Revised	N Total
Cementless	92	423
Hybrid (Femur Cemented)	56	203
TOTAL	148	626

TABLE 7

Revision Rates of Primary Total Resurfacing Hip Replacement by State

This enables a state by state variation to be identified for the Cormet/Cormet total resurfacing hip combination and provides the comparative data for each of the states for all other total resurfacing hip prostheses.

The purpose of this analysis is to determine if the higher than anticipated rate of revision has widespread distribution between states. If there is widespread distribution then the reason for the higher than anticipated rate of revision is unlikely to be surgeon specific. If the prosthesis has been used in only a small number of states it is not possible to distinguish if the higher than anticipated rate of revision is related to the prosthesis, surgeon, technique or patient.

Table 7: Revised Number of Primary Total Resurfacing Hip Replacement by State

Component	State	N Revised	N Total
Cormet/Cormet	NSW	54	245
	VIC	19	67
	QLD	21	78
	SA	54	236
Other Total Resurfacing Hip	NSW	302	4184
	VIC	453	5203
	QLD	275	3966
	WA	62	1173
	SA	95	631
	TAS	1	36
	ACT/NT	57	676
TOTAL		1393	16495

Note: Prostheses no longer used in 2023 are excluded from the comparator.

TABLE 8**Number of Revisions of Cormet/Cormet Primary Total Resurfacing Hip Replacement by Year of Implant**

This analysis details the number of prostheses reported each year to the Registry for the Cormet/Cormet total resurfacing hip combination. It also provides the subsequent number of revisions of the primaries reported in that year.

Primary procedures performed in later years have had less follow up time therefore the number revised is expected to be less than the number revised in earlier years. For example, a primary procedure performed in 2023 has a maximum of one year to be revised, whereas a primary procedure performed in 2021 has a maximum of three years to be revised.

Table 8: Number of Revisions of Cormet/Cormet Primary Total Resurfacing Hip Replacement by Year of Implant

Year of Implant	Number Revised	Total Number
2001	7	20
2002	12	42
2003	17	42
2004	15	50
2005	10	85
2006	15	74
2007	17	76
2008	22	94
2009	22	75
2010	10	50
2011	0	10
2012	0	4
2013	1	4
TOTAL	148	626

TABLE 9

Revision Rates of Cormet/Cormet Primary Total Resurfacing Hip Replacement by Catalogue Number Range

Many prostheses have a number of catalogue ranges. The catalogue range is specific to particular design features; more than one catalogue range usually indicates a minor difference in design in a particular Cormet/Cormet prosthesis.

This analysis has been undertaken to determine if the revision rate varies according to the catalogue number range.

Model	Catalogue Range	Catalogue Description	Cement	Material
Head				
Cormet	179040-179056	COCR RESURFACING HEAD	YES	METAL
Cormet	179040B-179056B	COCR W/TITANIUM & HA BI-COATED RESURFACING HEAD	NO	METAL
Cormet	479042-479054	COCR RESURFACING HEAD	YES	METAL
Cormet	479042B-479054B	COCR HAP BI COATED RESURFACING HEAD	NO	METAL
Cormet	480040B-480056B	COCR HAP FULLY BI COATED RESURFACING HEAD	NO	METAL
Acetabular				
Cormet	179242B-179264B	MOM HAP BI COATED PEGLESS RESURFACING CUP	NO	METAL
Cormet	479248B-479262B	COCR HAP BI COATED PEGLESS RESURFACING CUP	NO	METAL

Table 9: Revised Number of Cormet/Cormet Primary Total Resurfacing Hip Replacement by Catalogue Number Range

Head Range	Acetabular Range	N Revised	N Total
179040-179056	179242B-179264B	56	194
179040B-179056B	179242B-179264B	44	250
479042-479054	479248B-479262B	0	8
479042B-479054B	479248B-479262B	14	50
480040B-480056B	179242B-179264B	34	124
TOTAL		148	626