

SPH-Blind Total Conventional Hip Investigation

Note: This analysis compares the SPH-Blind acetabular prosthesis with all other total conventional hip prostheses.

This prosthesis has been identified as having a significantly higher rate of revision. For a detailed explanation of the process used by the Registry that results in identification of prostheses that have a higher than anticipated rate of revision please refer to the Prostheses with Higher than Anticipated Rates of Revision chapter of the most recent AOANJRR Annual Report, <https://aoanjrr.sahmri.com/annual-reports-2024>.

Note: Procedures using metal/metal prostheses with head size larger than 32mm are excluded from the comparator. Procedures using prostheses with no recorded use in 2023 are excluded from the comparator.

TABLE 1

Revision Rate of Primary Total Conventional Hip Replacement

The revision rate of the SPH-Blind total conventional hip prosthesis is compared to all other total conventional hip prostheses.

Table 1: Revision Rates of Primary Total Conventional Hip Replacement

Component	N Revised	N Total	Obs. Years	Revisions/100 Obs. Yrs (95% CI)
SPH-Blind	132	952	13457	0.98 (0.82, 1.16)
Other Total Conventional Hip	19249	538541	3454641	0.56 (0.55, 0.57)
TOTAL	19381	539493	3468098	0.56 (0.55, 0.57)

Note: Prostheses no longer used in 2023 are excluded from the comparator. Procedures using metal/metal prostheses with head size larger than 32mm are excluded from the comparator.

TABLE 2

Yearly Cumulative Percent Revision of Primary Total Conventional Hip Replacement

The yearly cumulative percent revision of the SPH-Blind total conventional hip prosthesis is compared to all other total conventional hip prostheses.

Table 2: Yearly Cumulative Percent Revision of Primary Total Conventional Hip Replacement

CPR	1 Yr	2 Yrs	3 Yrs	4 Yrs	5 Yrs	6 Yrs	7 Yrs	8 Yrs
SPH-Blind	3.8 (2.8, 5.2)	4.8 (3.6, 6.3)	5.8 (4.5, 7.5)	6.5 (5.1, 8.3)	7.3 (5.8, 9.2)	8.4 (6.8, 10.4)	8.9 (7.2, 11.0)	9.8 (8.0, 11.9)
Other Total Conventional Hip	1.7 (1.7, 1.8)	2.2 (2.1, 2.2)	2.5 (2.5, 2.5)	2.8 (2.7, 2.8)	3.1 (3.0, 3.1)	3.3 (3.3, 3.4)	3.6 (3.6, 3.7)	3.9 (3.8, 4.0)

CPR	9 Yrs	10 Yrs	11 Yrs	12 Yrs	13 Yrs	14 Yrs	15 Yrs	16 Yrs
SPH-Blind	10.1 (8.3, 12.3)	10.4 (8.6, 12.6)	10.8 (8.9, 13.0)	11.8 (9.8, 14.1)	12.4 (10.3, 14.8)	12.8 (10.8, 15.3)	14.4 (12.2, 17.0)	14.8 (12.5, 17.4)
Other Total Conventional Hip	4.2 (4.2, 4.3)	4.5 (4.5, 4.6)	4.9 (4.8, 5.0)	5.3 (5.2, 5.4)	5.7 (5.6, 5.8)	6.1 (5.9, 6.2)	6.5 (6.3, 6.6)	6.9 (6.7, 7.0)

CPR	17 Yrs	18 Yrs	19 Yrs	20 Yrs	21 Yrs	22 Yrs	23 Yrs
SPH-Blind	15.1 (12.8, 17.8)	15.5 (13.2, 18.3)	16.0 (13.6, 18.8)	16.5 (14.0, 19.4)	17.1 (14.4, 20.3)	17.1 (14.4, 20.3)	
Other Total Conventional Hip	7.3 (7.1, 7.4)	7.7 (7.5, 7.8)	8.2 (8.0, 8.4)	8.5 (8.2, 8.7)	9.0 (8.7, 9.3)	9.7 (9.2, 10.1)	10.3 (9.5, 11.2)

Note: Prostheses no longer used in 2023 are excluded from the comparator. Procedures using metal/metal prostheses with head size larger than 32mm are excluded from the comparator.

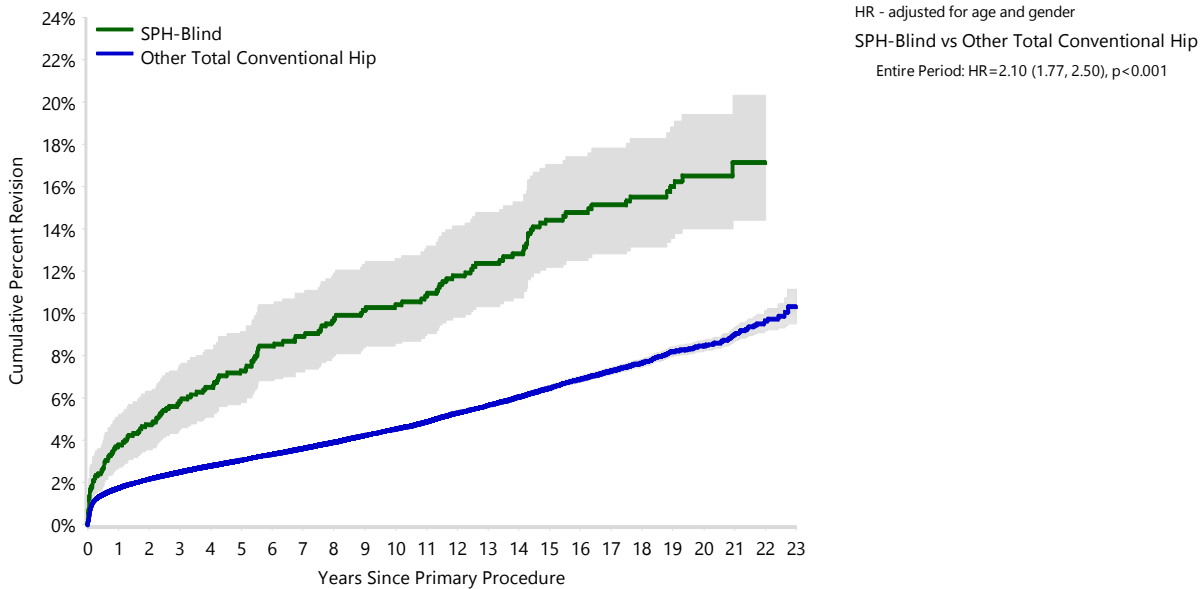
FIGURE 1

Yearly Cumulative Percent Revision of Primary Total Conventional Hip Replacement

The yearly cumulative percent revision of the SPH-Blind total conventional hip prosthesis is compared to all other total conventional hip prostheses. In addition, hazard ratios are reported.

Hazard ratios are reported for specific time periods during which the hazard ratio is constant. This is done to enable more specific and valid comparisons of the risk of revision over time. The pattern of variation in risk has important implications with respect to the underlying reasons for any difference.

Figure 1: Cumulative Percent Revision of Primary Total Conventional Hip Replacement



Number at Risk	0 Yr	1 Yr	2 Yrs	3 Yrs	4 Yrs	5 Yrs	6 Yrs	7 Yrs	8 Yrs	9 Yrs	10 Yrs	11 Yrs
SPH-Blind	952	908	884	862	835	811	785	763	730	706	681	654
Other Total Conventional Hip	538541	475645	425806	377168	332911	288979	247789	209621	174574	143301	117825	96251

Number at Risk	12 Yrs	13 Yrs	14 Yrs	15 Yrs	16 Yrs	17 Yrs	18 Yrs	19 Yrs	20 Yrs	21 Yrs	22 Yrs	23 Yrs
SPH-Blind	620	581	555	517	491	450	401	344	245	129	43	10
Other Total Conventional Hip	77815	61602	47695	35979	26857	20094	14821	10048	6170	3221	1205	203

Note: Prostheses no longer used in 2023 are excluded from the comparator. Procedures using metal/metal prostheses with head size larger than 32mm are excluded from the comparator.

TABLE 3**Primary Diagnosis for Revised Primary Total Conventional Hip Replacement**

This table identifies the diagnosis of the primary procedure which was subsequently revised. This information is provided as there is a variation on outcome depending on the primary diagnosis. It is therefore important when considering the reasons for a higher than anticipated rate of revision that there is identification of the primary diagnosis. This information should be compared to the primary diagnosis for the revisions of all other total conventional hip prostheses.

Table 3: Primary Diagnosis for Revised Primary Total Conventional Hip Replacement

Primary Diagnosis	SPH-Blind		Other Total Conventional Hip	
	Number	Percent	Number	Percent
Osteoarthritis	115	87.1	15951	82.9
Fractured Neck Of Femur	1	0.8	1420	7.4
Osteonecrosis	8	6.1	859	4.5
Developmental Dysplasia	4	3.0	320	1.7
Rheumatoid Arthritis	1	0.8	208	1.1
Failed Internal Fixation	1	0.8	151	0.8
Tumour	1	0.8	149	0.8
Other Inflammatory Arthritis			106	0.6
Fracture/Dislocation			53	0.3
Other			17	0.1
Arthrodesis Takedown	1	0.8	15	0.1
TOTAL	132	100.0	19249	100.0

Note: Prostheses no longer used in 2023 are excluded from the comparator. Procedures using metal/metal prostheses with head size larger than 32mm are excluded from the comparator.

TABLE 4

Reasons for Revision

This is reported in two ways: a percentage of primary procedures revised and as a percentage of all revision procedures.

% Primaries Revised: This shows the proportional contribution of each revision diagnosis as a percentage of the total number of primary procedures. This percentage can be used to approximate the risk of being revised for that diagnosis. Differing percentages between groups, with the same distribution of follow up time, may identify problems of concern.

% Revisions: The number of revisions for each diagnosis is expressed as a percentage of the total number of revisions. This shows the distribution of reasons for revision within a group but cannot be used as a comparison between groups.

Table 4: Primary Total Conventional Hip Replacement - Reason for Revision

Revision Diagnosis	Number	SPH-Blind		Other Total Conventional Hip		
		% Primaries Revised	% Revisions	Number	% Primaries Revised	% Revisions
Infection	10	1.1	7.6	4504	0.8	23.4
Prosthesis Dislocation/Instability	28	2.9	21.2	4381	0.8	22.8
Fracture	17	1.8	12.9	4265	0.8	22.2
Loosening	46	4.8	34.8	3830	0.7	19.9
Pain	4	0.4	3.0	336	0.1	1.7
Leg Length Discrepancy				291	0.1	1.5
Malposition	1	0.1	0.8	269	0.0	1.4
Lysis	5	0.5	3.8	217	0.0	1.1
Implant Breakage Stem	8	0.8	6.1	192	0.0	1.0
Implant Breakage Acetabular Insert	6	0.6	4.5	131	0.0	0.7
Wear Acetabular Insert	1	0.1	0.8	113	0.0	0.6
Incorrect Sizing				103	0.0	0.5
Metal Related Pathology				84	0.0	0.4
Implant Breakage Acetabular	5	0.5	3.8	72	0.0	0.4
Wear Head				48	0.0	0.2
Tumour				44	0.0	0.2
Implant Breakage Head	1	0.1	0.8	33	0.0	0.2
Heterotopic Bone				26	0.0	0.1
Wear Acetabulum				11	0.0	0.1
Osteonecrosis				2	0.0	0.0
Progression Of Disease				2	0.0	0.0
Synovitis				1	0.0	0.0
Other				294	0.1	1.5
N Revision	132	13.9	100.0	19249	3.6	100.0
N Primary	952			538541		

Note: Prostheses no longer used in 2023 are excluded from the comparator. Procedures using metal/metal prostheses with head size larger than 32mm are excluded from the comparator.

FIGURE 2

Cumulative Incidence Revision Diagnosis of Primary Total Conventional Hip Replacement

This figure details the cumulative incidence of the most common reasons for revision. The five most common reasons for revision are included as long as each of these reasons account for more than 10 procedures or at least 5% of all revisions for the SPH-Blind total conventional hip prosthesis. A comparative graph is provided of the cumulative incidence for the same reasons for revisions for all other total conventional hip prostheses.

Figure 2: Cumulative Incidence Revision Diagnosis for Primary Total Conventional Hip Replacement

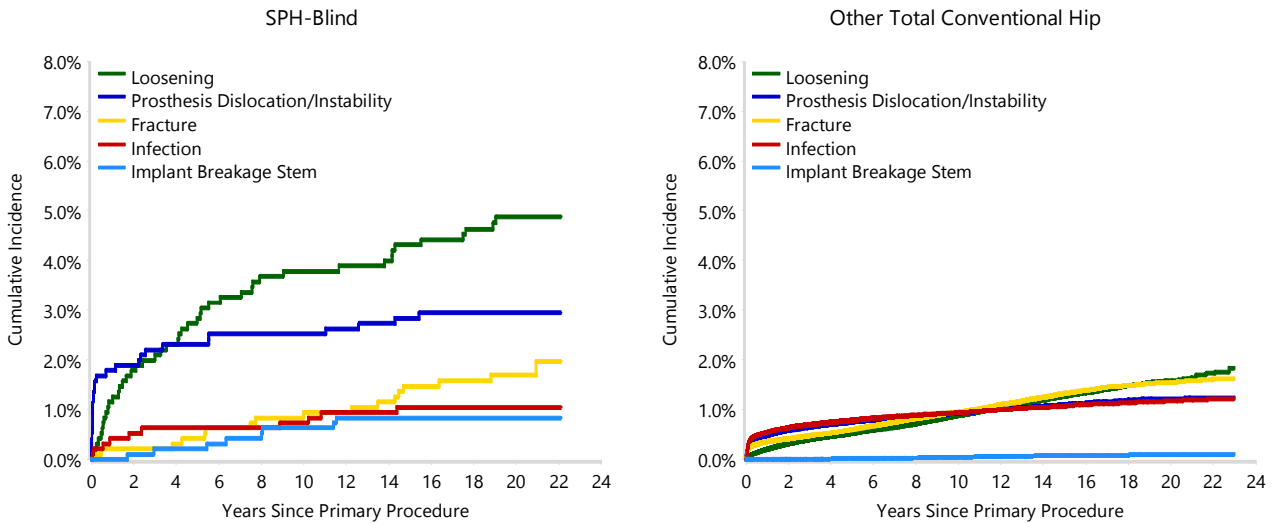


TABLE 5

Type of Revision Performed for Primary Total Conventional Hip Replacement

This analysis identifies the components used in the revision of the SPH-Blind total conventional hip prosthesis and compares it to the components used in the revision of all other total conventional hip prostheses.

The reason this analysis is undertaken is to identify whether there is one or more components which are being replaced that differ from the components replaced for revisions of all other total conventional hip prostheses i.e. is there a difference in the type of revision undertaken for the SPH-Blind total conventional hip prosthesis compared to all other total conventional hip prostheses.

Table 5: Primary Total Conventional Hip Replacement - Type of Revision

Type of Revision	SPH-Blind		Other Total Conventional Hip	
	Number	Percent	Number	Percent
Femoral Component	42	31.8	6347	33.0
Acetabular Component	35	26.5	3609	18.7
THR (Femoral/Acetabular)	16	12.1	2255	11.7
Cement Spacer	2	1.5	620	3.2
Removal of Prostheses			99	0.5
Reinsertion of Components			28	0.1
Total Femoral	1	0.8	9	0.0
Bipolar Head and Femoral			7	0.0
Saddle			1	0.0
N Major	96	72.7	12975	67.4
Head/Insert	13	9.8	4845	25.2
Head Only	3	2.3	927	4.8
Minor Components	3	2.3	311	1.6
Insert Only	1	0.8	187	1.0
Head/Neck/Insert	10	7.6		
Head/Neck	5	3.8	1	0.0
Bipolar Only			2	0.0
Cement Only			1	0.0
Neck/Insert	1	0.8		
N Minor	36	27.3	6274	32.6
TOTAL	132	100.0	19249	100.0

Note: Prostheses no longer used in 2023 are excluded from the comparator. Procedures using metal/metal prostheses with head size larger than 32mm are excluded from the comparator.

TABLE 6**Revision Rates of SPH-Blind Primary Total Conventional Hip Replacement by Fixation**

This analysis is provided as some prostheses have more than one fixation option. Additionally there are prostheses where an alternative to the recommended approach to fixation was used e.g. a cementless prosthesis that has been cemented or vice-versa.

Table 6: Revised Number of SPH-Blind Primary Total Conventional Hip Replacement by Fixation

Fixation	N Revised	N Total
Cemented	1	2
Cementless	110	770
Hybrid (Femur Cemented)	21	178
Reverse Hybrid (Femur Cementless)	0	2
TOTAL	132	952

TABLE 7**Revision Rates of SPH-Blind Primary Total Conventional Hip Replacement by Bearing Surface**

This analysis is provided as some prostheses are combined with a variety of bearing surfaces. All bearing surfaces used with this prosthesis are listed.

Table 7: Revised Number of SPH-Blind Primary Total Conventional Hip Replacement by Bearing Surface

Bearing Surface	N Revised	N Total
Ceramic/Ceramic	96	641
Ceramic/Non XLPE	8	61
Metal/Metal	0	1
Metal/Non XLPE	28	247
Unknown	0	2
TOTAL	132	952

TABLE 8

Revision Rates of Primary Total Conventional Hip Replacement by State

This enables a state by state variation to be identified for the SPH-Blind total conventional hip prosthesis and provides the comparative data for each of the states for all other total conventional hip prostheses.

The purpose of this analysis is to determine if the higher than anticipated rate of revision has widespread distribution between states. If there is widespread distribution then the reason for the higher than anticipated rate of revision is unlikely to be surgeon specific. If the prosthesis has been used in only a small number of states it is not possible to distinguish if the higher than anticipated rate of revision is related to the prosthesis, surgeon, technique or patient.

Table 8: Revised Number of Primary Total Conventional Hip Replacement by State

Component	State	N Revised	N Total
SPH-Blind	NSW	40	379
	VIC	9	105
	QLD	39	288
	WA	37	136
	ACT/NT	7	44
Other Total Conventional Hip	NSW	5207	157707
	VIC	4859	140681
	QLD	3791	94582
	WA	2546	63265
	SA	1825	49398
	TAS	452	18198
	ACT/NT	569	14710
TOTAL		19381	539493

Note: Prostheses no longer used in 2023 are excluded from the comparator. Procedures using metal/metal prostheses with head size larger than 32mm are excluded from the comparator.

TABLE 9**Number of Revisions of SPH-Blind Primary Total Conventional Hip Replacement by Year of Implant**

This analysis details the number of prostheses reported each year to the Registry for the SPH-Blind total conventional hip prosthesis. It also provides the subsequent number of revisions of the primaries reported in that year.

Primary procedures performed in later years have had less follow up time therefore the number revised is expected to be less than the number revised in earlier years. For example, a primary procedure performed in 2023 has a maximum of one year to be revised, whereas a primary procedure performed in 2021 has a maximum of three years to be revised.

Table 9: Number of Revisions of SPH-Blind Primary Total Conventional Hip Replacement by Year of Implant

Year of Implant	Number Revised	Total Number
2000	2	32
2001	17	116
2002	25	229
2003	40	261
2004	28	205
2005	8	41
2006	9	49
2007	3	19
TOTAL	132	952

TABLE 10

Revision Rates of SPH-Blind Primary Total Conventional Hip Replacement by Catalogue Number Range

Many prostheses have a number of catalogue ranges. The catalogue range is specific to particular design features; more than one catalogue range usually indicates a minor difference in design in a particular SPH-Blind prosthesis.

This analysis has been undertaken to determine if the revision rate varies according to the catalogue number range.

Model	Catalogue Range	Catalogue Description	Cement	Material
Acetabular				
SPH-Blind	552925010-552925120	SPH BLIND ACETABULAR CUP	NO	METAL

Table 10: Revised Number of SPH-Blind Primary Total Conventional Hip Replacement by Catalogue Number Range

Acetabular Range	N Revised	N Total
552925010-552925120	132	952
TOTAL	132	952

TABLE 11

Revision Rates of SPH-Blind Primary Total Conventional Hip Replacement by Component

A prosthesis may be combined with multiple components. This analysis has been undertaken to determine if the revision rate varies according to the component with which it is combined.

Table 11: Revised Number of SPH-Blind Primary Total Conventional Hip Replacement by Femoral Stem Component

Femoral Stem Component	N Revised	N Total
AcuMatch M-Series	1	6
Apex	9	35
C-Stem	2	10
C2	1	3
CORAIL	0	11
Elite Plus	0	5
Esop	0	1
Exeter V40	1	10
F2L	71	616
Friendly Hip	19	145
GMRS	0	1
Generic Modular Body	1	2
H Moos	0	7
MS 30	0	1
Margron	20	49
Modulus	0	3
PFM-R	0	1
Restoration	0	1
Revision Hip	0	10
S-Rom	1	3
Secur-Fit Plus	0	1
Stability	1	4
Summit	1	3
UniSyn	4	23
VerSys Heritage	0	1
TOTAL	132	952