

Profix Oxinium (cementless)/Profix Mobile Total Knee Investigation

Note: This analysis compares the Profix Oxinium (cless)/Profix Mobile femoral/tibial combination with all other total knee prostheses.

This combination has been identified as having a significantly higher rate of revision. For a detailed explanation of the process used by the Registry that results in identification of prostheses that have a higher than anticipated rate of revision please refer to the Prostheses with Higher than Anticipated Rates of Revision chapter of the most recent AOANJRR Annual Report, <https://aoanjrr.sahmri.com/annual-reports-2023>.

Note: Procedures using prostheses with no recorded use in 2022 are excluded from the comparator.

TABLE 1

Revision Rate of Primary Total Knee Replacement

The revision rate of the Profix Oxinium (cless)/Profix Mobile total knee combination is compared to all other total knee prostheses.

Table 1: Revision Rates of Primary Total Knee Replacement

Component	N Revised	N Total	Obs. Years	Revisions/100 Obs. Yrs (95% CI)
Profix Oxinium (cless)/Profix Mobile	71	158	1395	5.09 (3.97, 6.42)
Other Total Knee	26836	757949	5069780	0.53 (0.52, 0.54)
TOTAL	26907	758107	5071175	0.53 (0.52, 0.54)

Note: Prostheses no longer used in 2022 are excluded from the comparator.

TABLE 2

Yearly Cumulative Percent Revision of Primary Total Knee Replacement

The yearly cumulative percent revision of the Profix Oxinium (class)/Profix Mobile total knee combination is compared to all other total knee prostheses.

Table 2: Yearly Cumulative Percent Revision of Primary Total Knee Replacement

CPR	1 Yr	2 Yrs	3 Yrs	4 Yrs	5 Yrs	6 Yrs	7 Yrs	8 Yrs
Profix Oxinium (class)/Profix Mobile	9.0 (5.4, 14.6)	27.0 (20.7, 34.7)	40.2 (32.9, 48.3)	41.5 (34.2, 49.7)	41.5 (34.2, 49.7)	42.9 (35.5, 51.1)	43.6 (36.2, 51.8)	43.6 (36.2, 51.8)
Other Total Knee	1.0 (1.0, 1.0)	1.8 (1.8, 1.9)	2.4 (2.4, 2.4)	2.8 (2.8, 2.9)	3.1 (3.1, 3.2)	3.5 (3.4, 3.5)	3.8 (3.7, 3.8)	4.0 (4.0, 4.1)

CPR	9 Yrs	10 Yrs	11 Yrs	12 Yrs	13 Yrs	14 Yrs	15 Yrs
Profix Oxinium (class)/Profix Mobile	44.4 (36.9, 52.6)	46.0 (38.4, 54.3)	46.0 (38.4, 54.3)	46.0 (38.4, 54.3)	46.0 (38.4, 54.3)	47.0 (39.3, 55.4)	47.0 (39.3, 55.4)
Other Total Knee	4.3 (4.3, 4.4)	4.6 (4.6, 4.7)	4.9 (4.9, 5.0)	5.2 (5.2, 5.3)	5.6 (5.5, 5.6)	5.9 (5.8, 5.9)	6.2 (6.1, 6.3)

CPR	16 Yrs	17 Yrs	18 Yrs	19 Yrs	20 Yrs	21 Yrs	22 Yrs
Profix Oxinium (class)/Profix Mobile	47.0 (39.3, 55.4)						
Other Total Knee	6.6 (6.5, 6.8)	7.0 (6.9, 7.2)	7.3 (7.2, 7.5)	7.6 (7.4, 7.8)	7.8 (7.6, 8.0)	8.0 (7.8, 8.2)	8.2 (7.9, 8.6)

Note: Prostheses no longer used in 2022 are excluded from the comparator.

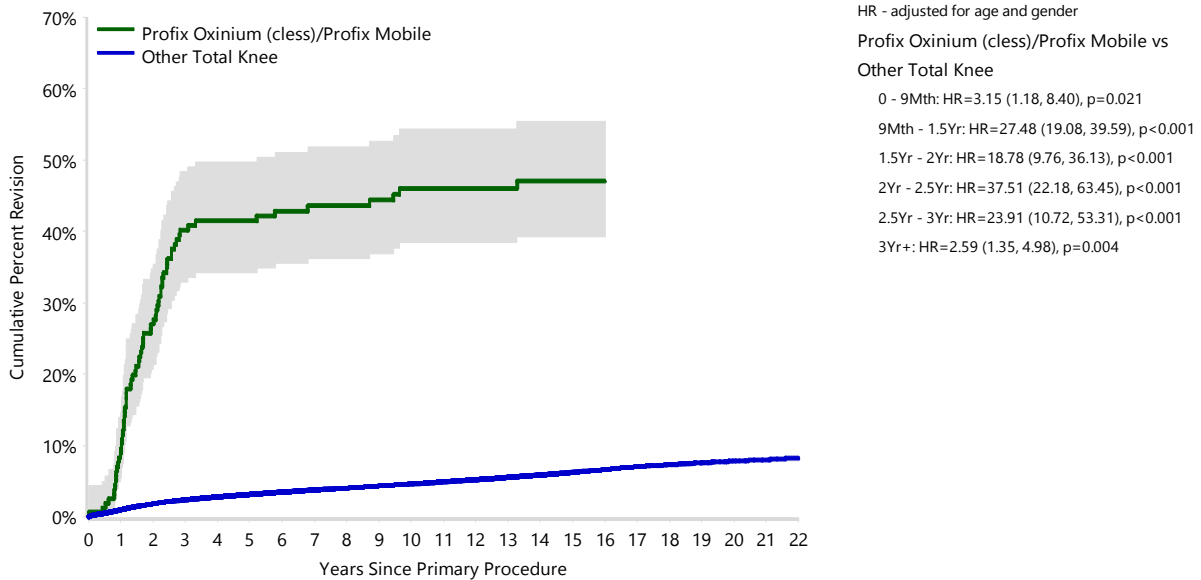
FIGURE 1

Yearly Cumulative Percent Revision of Primary Total Knee Replacement

The yearly cumulative percent revision of the Profix Oxinium (cless)/Profix Mobile total knee combination is compared to all other total knee prostheses. In addition, hazard ratios are reported.

Hazard ratios are reported for specific time periods during which the hazard ratio is constant. This is done to enable more specific and valid comparisons of the risk of revision over time. The pattern of variation in risk has important implications with respect to the underlying reasons for any difference.

Figure 1: Cumulative Percent Revision of Primary Total Knee Replacement



Number at Risk	0 Yr	1 Yr	2 Yrs	3 Yrs	4 Yrs	5 Yrs	6 Yrs	7 Yrs	8 Yrs	9 Yrs	10 Yrs	11 Yrs
Profix Oxinium (cless)/Profix Mobile	158	142	112	90	88	85	82	80	79	71	62	60
Other Total Knee	757949	689882	619616	556833	492801	431130	372737	318126	267229	221560	180409	143443

Number at Risk	12 Yrs	13 Yrs	14 Yrs	15 Yrs	16 Yrs	17 Yrs	18 Yrs	19 Yrs	20 Yrs	21 Yrs	22 Yrs
Profix Oxinium (cless)/Profix Mobile	60	54	49	45	41	37	36	36	11	0	0
Other Total Knee	111922	85787	65049	47997	34991	24735	16433	9944	5486	2318	538

Note: Prostheses no longer used in 2022 are excluded from the comparator.

TABLE 3**Primary Diagnosis for Revised Primary Total Knee Replacement**

This table identifies the diagnosis of the primary procedure which was subsequently revised. This information is provided as there is a variation on outcome depending on the primary diagnosis. It is therefore important when considering the reasons for a higher than anticipated rate of revision that there is identification of the primary diagnosis. This information should be compared to the primary diagnosis for the revisions of all other total knee prostheses.

Table 3: Primary Diagnosis for Revised Primary Total Knee Replacement

Primary Diagnosis	Profix Oxinium (class)/Profix Mobile		Other Total Knee	
	Number	Percent	Number	Percent
Osteoarthritis	71	100.0	26004	96.9
Rheumatoid Arthritis			342	1.3
Tumour			162	0.6
Other Inflammatory Arthritis			160	0.6
Osteonecrosis			101	0.4
Fracture			48	0.2
Other			18	0.1
Chondrocalcinosis			1	0.0
TOTAL	71	100.0	26836	100.0

Note: Prostheses no longer used in 2022 are excluded from the comparator.

TABLE 4

Reasons for Revision

This is reported in two ways: a percentage of primary procedures revised and as a percentage of all revision procedures.

% Primaries Revised: This shows the proportional contribution of each revision diagnosis as a percentage of the total number of primary procedures. This percentage can be used to approximate the risk of being revised for that diagnosis. Differing percentages between groups, with the same distribution of follow up time, may identify problems of concern.

% Revisions: The number of revisions for each diagnosis is expressed as a percentage of the total number of revisions. This shows the distribution of reasons for revision within a group but cannot be used as a comparison between groups.

Table 4: Primary Total Knee Replacement - Reason for Revision (Follow-up Limited to 20.4 Years)

Revision Diagnosis	Profix Oxinium (class)/Profix Mobile			Other Total Knee		
	Number	% Primaries Revised	% Revisions	Number	% Primaries Revised	% Revisions
Infection	4	2.5	5.6	7355	1.0	27.4
Loosening	61	38.6	85.9	6019	0.8	22.4
Instability	2	1.3	2.8	2609	0.3	9.7
Pain				2037	0.3	7.6
Patellofemoral Pain	1	0.6	1.4	1933	0.3	7.2
Patella Erosion				1785	0.2	6.7
Arthrofibrosis	1	0.6	1.4	1035	0.1	3.9
Fracture	1	0.6	1.4	1022	0.1	3.8
Malalignment				602	0.1	2.2
Wear Tibial Insert				368	0.0	1.4
Lysis				329	0.0	1.2
Incorrect Sizing				262	0.0	1.0
Patella Maltracking				186	0.0	0.7
Implant Breakage Tibial Insert				174	0.0	0.6
Bearing Dislocation				151	0.0	0.6
Implant Breakage Patella				140	0.0	0.5
Metal Related Pathology				107	0.0	0.4
Prosthesis Dislocation	1	0.6	1.4	84	0.0	0.3
Synovitis				75	0.0	0.3
Osteonecrosis				55	0.0	0.2
Implant Breakage Tibial				42	0.0	0.2
Implant Breakage Femoral				39	0.0	0.1
Wear Patella				36	0.0	0.1
Tumour				34	0.0	0.1
Heterotopic Bone				14	0.0	0.1
Wear Tibial				9	0.0	0.0
Progression Of Disease				7	0.0	0.0
Patella Dislocation				2	0.0	0.0
Incorrect Side				1	0.0	0.0
Wear Femoral				1	0.0	0.0
Other				316	0.0	1.2
N Revision	71	44.9	100.0	26829	3.5	100.0
N Primary	158			757949		

Note: This table is restricted to revisions within 20.4 years for all groups to allow a time-matched comparison of revisions.

Note: Prostheses no longer used in 2022 are excluded from the comparator.

FIGURE 2

Cumulative Incidence Revision Diagnosis of Primary Total Knee Replacement

This figure details the cumulative incidence of the most common reasons for revision. The five most common reasons for revision are included as long as each of these reasons account for more than 10 procedures or at least 5% of all revisions for the Profix Oxinium (class)/Profix Mobile total knee combination. A comparative graph is provided of the cumulative incidence for the same reasons for revisions for all other total knee prostheses.

Figure 2: Cumulative Incidence Revision Diagnosis for Primary Total Knee Replacement

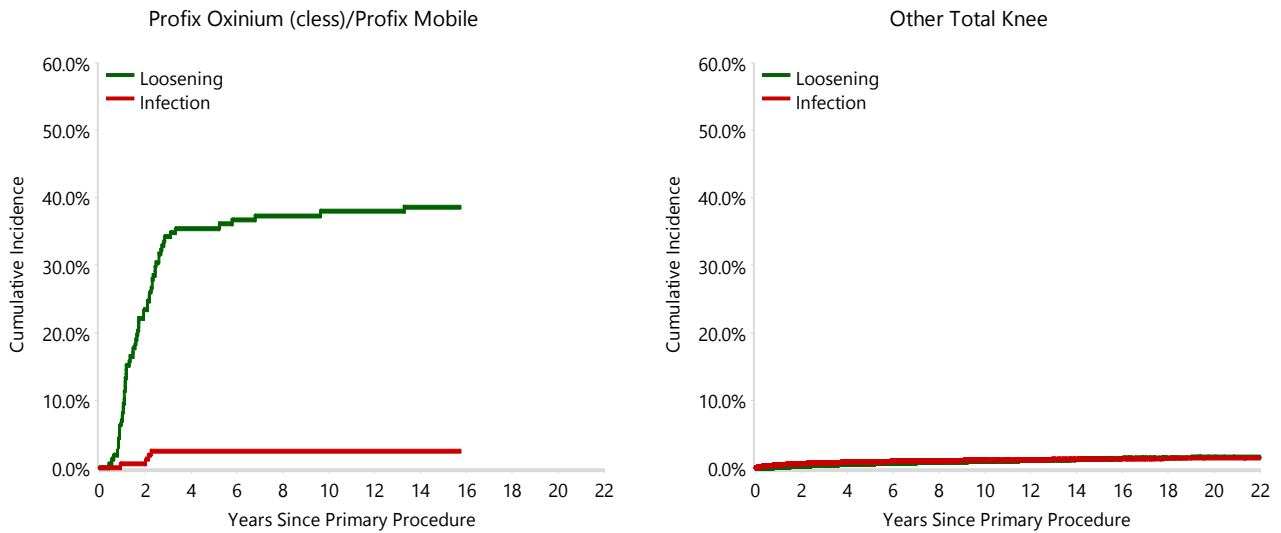


TABLE 5

Type of Revision Performed for Primary Total Knee Replacement

This analysis identifies the components used in the revision of the Profix Oxinium (cless)/Profix Mobile total knee combination and compares it to the components used in the revision of all other total knee prostheses.

The reason this analysis is undertaken is to identify whether there is one or more components which are being replaced that differ from the components replaced for revisions of all other total knee prostheses i.e. is there a difference in the type of revision undertaken for the Profix Oxinium (cless)/Profix Mobile total knee combination compared to all other total knee prostheses.

Table 5: Primary Total Knee Replacement - Type of Revision (Follow-up Limited to 20.4 Years)

Type of Revision	Profix Oxinium (cless)/Profix Mobile		Other Total Knee	
	Number	Percent	Number	Percent
TKR (Tibial/Femoral)	5	7.0	6653	24.8
Tibial Component			2136	8.0
Cement Spacer			1363	5.1
Femoral Component	61	85.9	1322	4.9
Removal of Prostheses			153	0.6
Total Femoral			24	0.1
Reinsertion of Components			13	0.0
N Major	66	93.0	11664	43.5
Insert Only	2	2.8	7581	28.3
Patella Only	1	1.4	4730	17.6
Insert/Patella	1	1.4	2772	10.3
Minor Components	1	1.4	64	0.2
Cement Only			18	0.1
N Minor	5	7.0	15165	56.5
TOTAL	71	100.0	26829	100.0

Note: This table is restricted to revisions within 20.4 years for all groups to allow a time-matched comparison of revisions.

Note: Prostheses no longer used in 2022 are excluded from the comparator.

TABLE 6**Revision Rates of Profix Oxinium (class)/Profix Mobile Primary Total Knee Replacement by Fixation**

This analysis is provided as some prostheses have more than one fixation option. Additionally there are prostheses where an alternative to the recommended approach to fixation was used e.g. a cementless prosthesis that has been cemented or vice-versa.

Table 6: Revised Number of Profix Oxinium (class)/Profix Mobile Primary Total Knee Replacement by Fixation

Fixation	N Revised	N Total
Cementless	55	117
Hybrid (Tibial Cemented)	16	41
TOTAL	71	158

TABLE 7**Revision Rates of Profix Oxinium (class)/Profix Mobile Primary Total Knee Replacement by Bearing Surface**

This analysis is provided as some prostheses are combined with a variety of bearing surfaces. All bearing surfaces used with this combination are listed.

Table 7: Revised Number of Profix Oxinium (class)/Profix Mobile Primary Total Knee Replacement by Bearing Surface

Bearing Surface	N Revised	N Total
Non XLPE	71	158
TOTAL	71	158

TABLE 8**Revision Rates of Profix Oxinium (class)/Profix Mobile Primary Total Knee Replacement by Bearing Mobility**

This analysis is provided as some prostheses are combined with a variety of bearing mobilities. All bearing mobilities used with this combination are listed.

Table 8: Revised Number of Profix Oxinium (class)/Profix Mobile Primary Total Knee Replacement by Bearing Mobility

Bearing Mobility	N Revised	N Total
Rotating	71	158
TOTAL	71	158

TABLE 9**Revision Rates of Profix Oxinium (class)/Profix Mobile Primary Total Knee Replacement by Stability**

This analysis is provided as some prostheses are combined with a variety of stabilities. All stabilities used with this combination are listed.

Table 9: Revised Number of Profix Oxinium (class)/Profix Mobile Primary Total Knee Replacement by Stability

Stability	N Revised	N Total
Minimally Stabilised	71	158
TOTAL	71	158

TABLE 10

Revision Rates of Primary Total Knee Replacement by State

This enables a state by state variation to be identified for the Profix Oxinium (cless)/Profix Mobile total knee combination and provides the comparative data for each of the states for all other total knee prostheses.

The purpose of this analysis is to determine if the higher than anticipated rate of revision has widespread distribution between states. If there is widespread distribution then the reason for the higher than anticipated rate of revision is unlikely to be surgeon specific. If the prosthesis has been used in only a small number of states it is not possible to distinguish if the higher than anticipated rate of revision is related to the prosthesis, surgeon, technique or patient.

Table 10: Revised Number of Primary Total Knee Replacement by State

Component	State	N Revised	N Total
Profix Oxinium (cless)/Profix Mobile	NSW	44	95
	VIC	11	16
	QLD	1	7
	SA	1	1
	ACT/NT	14	39
Other Total Knee	NSW	7959	262433
	VIC	5825	153047
	QLD	5766	157008
	WA	3245	81139
	SA	2967	66419
	TAS	437	18133
	ACT/NT	637	19770
TOTAL		26907	758107

Note: Prostheses no longer used in 2022 are excluded from the comparator.

TABLE 11**Number of Revisions of Profix Oxinium (cless)/Profix Mobile Primary Total Knee Replacement by Year of Implant**

This analysis details the number of prostheses reported each year to the Registry for the Profix Oxinium (cless)/Profix Mobile total knee combination. It also provides the subsequent number of revisions of the primaries reported in that year.

Primary procedures performed in later years have had less follow up time therefore the number revised is expected to be less than the number revised in earlier years. For example, a primary procedure performed in 2022 has a maximum of one year to be revised, whereas a primary procedure performed in 2020 has a maximum of three years to be revised.

Table 11: Number of Revisions of Profix Oxinium (cless)/Profix Mobile Primary Total Knee Replacement by Year of Implant

Year of Implant	Number Revised	Total Number
2002	28	63
2003	43	95
TOTAL	71	158

TABLE 12

Revision Rates of Profix Oxinium (cless)/Profix Mobile Primary Total Knee Replacement by Catalogue Number Range

Many prostheses have a number of catalogue ranges. The catalogue range is specific to particular design features; more than one catalogue range usually indicates a minor difference in design in a particular Profix Oxinium (cless)/Profix Mobile prosthesis.

This analysis has been undertaken to determine if the revision rate varies according to the catalogue number range.

Model	Catalogue Range	Catalogue Description	Cement	Coating	Fixation
Femoral					
Profix Oxinium	71502127-71502277	PROFIX OXINIUM MACROTEXTURED FEMORAL COMPONENT	NO		MACROTEXTURED
Tibial					
Profix Mobile	71544102-71544208	POROUS HA TIBIAL BASEPLATE	NO	HA COATED	POROUS
Profix Mobile	71549101-71549208	NONPOROUS TIBIAL BASEPLATE	YES		

Table 12: Revised Number of Profix Oxinium (cless)/Profix Mobile Primary Total Knee Replacement by Catalogue Number Range

Femoral Range	Tibial Range	N Revised	N Total
71502127-71502277	71544102-71544208	56	118
	71549101-71549208	15	40
TOTAL		71	158