

## Cormet Total Conventional Hip Investigation

Note: This analysis compares the Cormet acetabular prosthesis with all other total conventional hip prostheses.

This prosthesis has been identified as having a significantly higher rate of revision. For a detailed explanation of the process used by the Registry that results in identification of prostheses that have a higher than anticipated rate of revision please refer to the Prostheses with Higher than Anticipated Rates of Revision chapter of the most recent AOANJRR Annual Report, <https://aoanjrr.sahmri.com/annual-reports-2023>.

Note: Procedures using metal/metal prostheses with head size larger than 32mm are excluded from the comparator. Procedures using prostheses with no recorded use in 2022 are excluded from the comparator.

### TABLE 1

#### Revision Rate of Primary Total Conventional Hip Replacement

The revision rate of the Cormet total conventional hip prosthesis is compared to all other total conventional hip prostheses.

**Table 1: Revision Rates of Primary Total Conventional Hip Replacement**

Component	N Revised	N Total	Obs. Years	Revisions/100 Obs. Yrs (95% CI)
Cormet	150	803	9476	1.58 (1.34, 1.86)
Other Total Conventional Hip	17452	494145	3081462	0.57 (0.56, 0.57)
<b>TOTAL</b>	<b>17602</b>	<b>494948</b>	<b>3090938</b>	<b>0.57 (0.56, 0.58)</b>

Note: Prostheses no longer used in 2022 are excluded from the comparator. Procedures using metal/metal prostheses with head size larger than 32mm are excluded from the comparator.

TABLE 2

**Yearly Cumulative Percent Revision of Primary Total Conventional Hip Replacement**

The yearly cumulative percent revision of the Cormet total conventional hip prosthesis is compared to all other total conventional hip prostheses.

**Table 2: Yearly Cumulative Percent Revision of Primary Total Conventional Hip Replacement**

CPR	1 Yr	2 Yrs	3 Yrs	4 Yrs	5 Yrs	6 Yrs	7 Yrs	8 Yrs
Cormet	1.5 (0.9, 2.6)	2.4 (1.5, 3.7)	3.5 (2.4, 5.1)	4.2 (3.0, 5.8)	5.2 (3.9, 7.0)	6.9 (5.4, 9.0)	9.0 (7.2, 11.3)	10.3 (8.3, 12.7)
Other Total Conventional Hip	1.7 (1.7, 1.8)	2.2 (2.1, 2.2)	2.5 (2.5, 2.6)	2.8 (2.7, 2.8)	3.1 (3.0, 3.1)	3.4 (3.3, 3.4)	3.6 (3.6, 3.7)	3.9 (3.9, 4.0)

CPR	9 Yrs	10 Yrs	11 Yrs	12 Yrs	13 Yrs	14 Yrs	15 Yrs
Cormet	12.2 (10.1, 14.8)	13.7 (11.4, 16.4)	15.1 (12.7, 18.0)	16.1 (13.6, 19.0)	18.2 (15.5, 21.3)	19.6 (16.8, 22.9)	21.9 (18.7, 25.6)
Other Total Conventional Hip	4.3 (4.2, 4.3)	4.6 (4.5, 4.7)	4.9 (4.8, 5.0)	5.3 (5.2, 5.4)	5.7 (5.6, 5.8)	6.1 (6.0, 6.2)	6.5 (6.4, 6.6)

CPR	16 Yrs	17 Yrs	18 Yrs	19 Yrs	20 Yrs	21 Yrs	22 Yrs
Cormet	23.8 (20.3, 27.9)	25.7 (21.7, 30.2)	28.6 (23.7, 34.3)				
Other Total Conventional Hip	6.9 (6.8, 7.1)	7.3 (7.1, 7.4)	7.6 (7.4, 7.8)	8.2 (8.0, 8.5)	8.5 (8.2, 8.8)	8.9 (8.5, 9.3)	9.3 (8.8, 9.8)

Note: Prostheses no longer used in 2022 are excluded from the comparator. Procedures using metal/metal prostheses with head size larger than 32mm are excluded from the comparator.

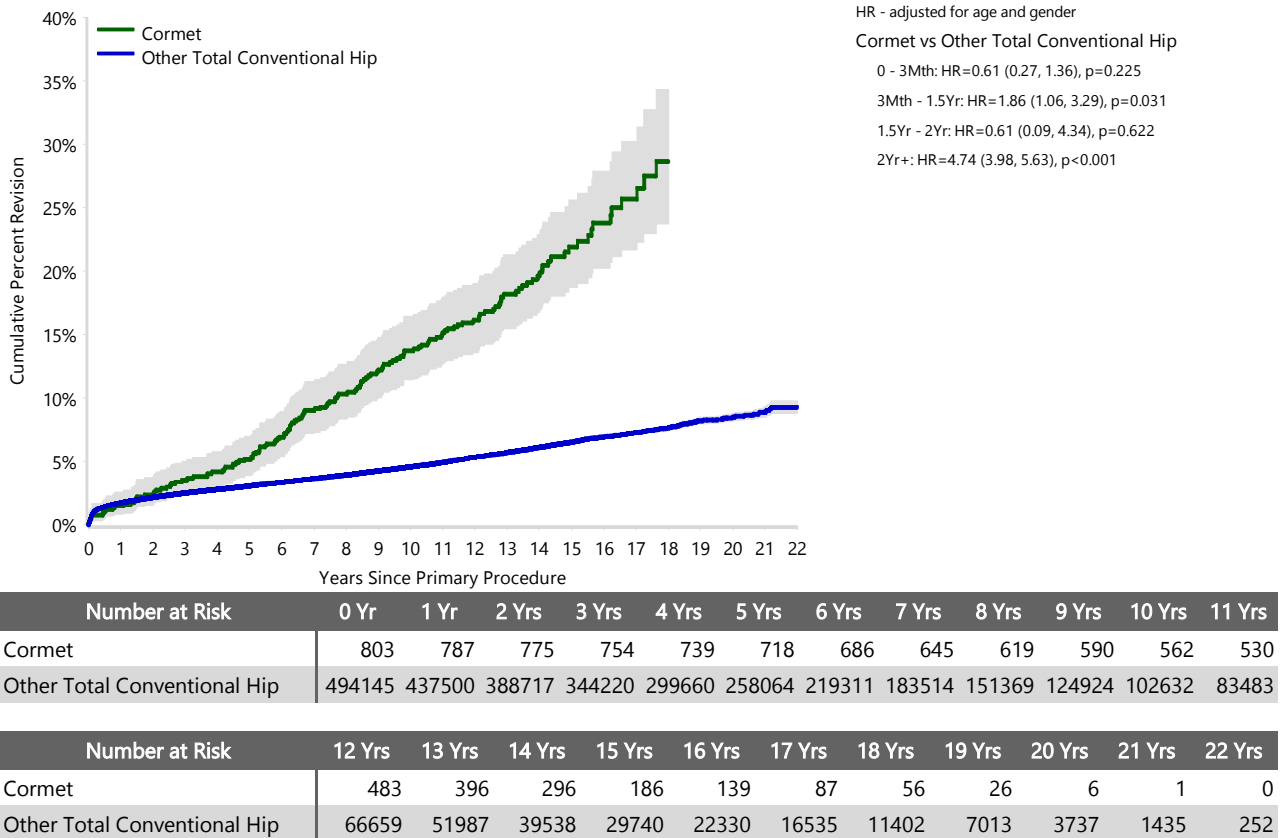
FIGURE 1

**Yearly Cumulative Percent Revision of Primary Total Conventional Hip Replacement**

The yearly cumulative percent revision of the Cormet total conventional hip prosthesis is compared to all other total conventional hip prostheses. In addition, hazard ratios are reported.

Hazard ratios are reported for specific time periods during which the hazard ratio is constant. This is done to enable more specific and valid comparisons of the risk of revision over time. The pattern of variation in risk has important implications with respect to the underlying reasons for any difference.

**Figure 1: Cumulative Percent Revision of Primary Total Conventional Hip Replacement**



Note: Prostheses no longer used in 2022 are excluded from the comparator. Procedures using metal/metal prostheses with head size larger than 32mm are excluded from the comparator.

**TABLE 3****Primary Diagnosis for Revised Primary Total Conventional Hip Replacement**

This table identifies the diagnosis of the primary procedure which was subsequently revised. This information is provided as there is a variation on outcome depending on the primary diagnosis. It is therefore important when considering the reasons for a higher than anticipated rate of revision that there is identification of the primary diagnosis. This information should be compared to the primary diagnosis for the revisions of all other total conventional hip prostheses.

**Table 3: Primary Diagnosis for Revised Primary Total Conventional Hip Replacement**

Primary Diagnosis	Cornet		Other Total Conventional Hip	
	Number	Percent	Number	Percent
Osteoarthritis	130	86.7	14432	82.7
Fractured Neck Of Femur	6	4.0	1291	7.4
Osteonecrosis	5	3.3	797	4.6
Developmental Dysplasia	2	1.3	279	1.6
Rheumatoid Arthritis	1	0.7	186	1.1
Failed Internal Fixation			147	0.8
Tumour	1	0.7	145	0.8
Other Inflammatory Arthritis	4	2.7	99	0.6
Fracture/Dislocation			46	0.3
Arthrodesis Takedown			16	0.1
Other	1	0.7	14	0.1
<b>TOTAL</b>	<b>150</b>	<b>100.0</b>	<b>17452</b>	<b>100.0</b>

Note: Prostheses no longer used in 2022 are excluded from the comparator. Procedures using metal/metal prostheses with head size larger than 32mm are excluded from the comparator.

TABLE 4

## Reasons for Revision

This is reported in two ways: a percentage of primary procedures revised and as a percentage of all revision procedures.

**% Primaries Revised:** This shows the proportional contribution of each revision diagnosis as a percentage of the total number of primary procedures. This percentage can be used to approximate the risk of being revised for that diagnosis. Differing percentages between groups, with the same distribution of follow up time, may identify problems of concern.

**% Revisions:** The number of revisions for each diagnosis is expressed as a percentage of the total number of revisions. This shows the distribution of reasons for revision within a group but cannot be used as a comparison between groups.

Table 4: Primary Total Conventional Hip Replacement - Reason for Revision

Revision Diagnosis	Number	Cormet		Other Total Conventional Hip		
		% Primaries Revised	% Revisions	Number	% Primaries Revised	% Revisions
Prosthesis Dislocation/Instability	6	0.7	4.0	4021	0.8	23.0
Infection	26	3.2	17.3	4009	0.8	23.0
Fracture	19	2.4	12.7	3811	0.8	21.8
Loosening	39	4.9	26.0	3535	0.7	20.3
Pain	4	0.5	2.7	310	0.1	1.8
Leg Length Discrepancy	3	0.4	2.0	270	0.1	1.5
Malposition				244	0.0	1.4
Lysis	7	0.9	4.7	197	0.0	1.1
Implant Breakage Stem	10	1.2	6.7	168	0.0	1.0
Implant Breakage Acetabular Insert				120	0.0	0.7
Incorrect Sizing	1	0.1	0.7	102	0.0	0.6
Wear Acetabular Insert				102	0.0	0.6
Metal Related Pathology	31	3.9	20.7	79	0.0	0.5
Implant Breakage Acetabular	2	0.2	1.3	70	0.0	0.4
Wear Head				45	0.0	0.3
Tumour				41	0.0	0.2
Implant Breakage Head				32	0.0	0.2
Heterotopic Bone				26	0.0	0.1
Wear Acetabulum	1	0.1	0.7	9	0.0	0.1
Progression Of Disease				2	0.0	0.0
Osteonecrosis	1	0.1	0.7	1	0.0	0.0
Synovitis				1	0.0	0.0
Other				257	0.1	1.5
<b>N Revision</b>	<b>150</b>	<b>18.7</b>	<b>100.0</b>	<b>17452</b>	<b>3.5</b>	<b>100.0</b>
<b>N Primary</b>	<b>803</b>			<b>494145</b>		

Note: Prostheses no longer used in 2022 are excluded from the comparator. Procedures using metal/metal prostheses with head size larger than 32mm are excluded from the comparator.

**FIGURE 2**

**Cumulative Incidence Revision Diagnosis of Primary Total Conventional Hip Replacement**

This figure details the cumulative incidence of the most common reasons for revision. The five most common reasons for revision are included as long as each of these reasons account for more than 10 procedures or at least 5% of all revisions for the Cormet total conventional hip prosthesis. A comparative graph is provided of the cumulative incidence for the same reasons for revisions for all other total conventional hip prostheses.

**Figure 2: Cumulative Incidence Revision Diagnosis for Primary Total Conventional Hip Replacement**

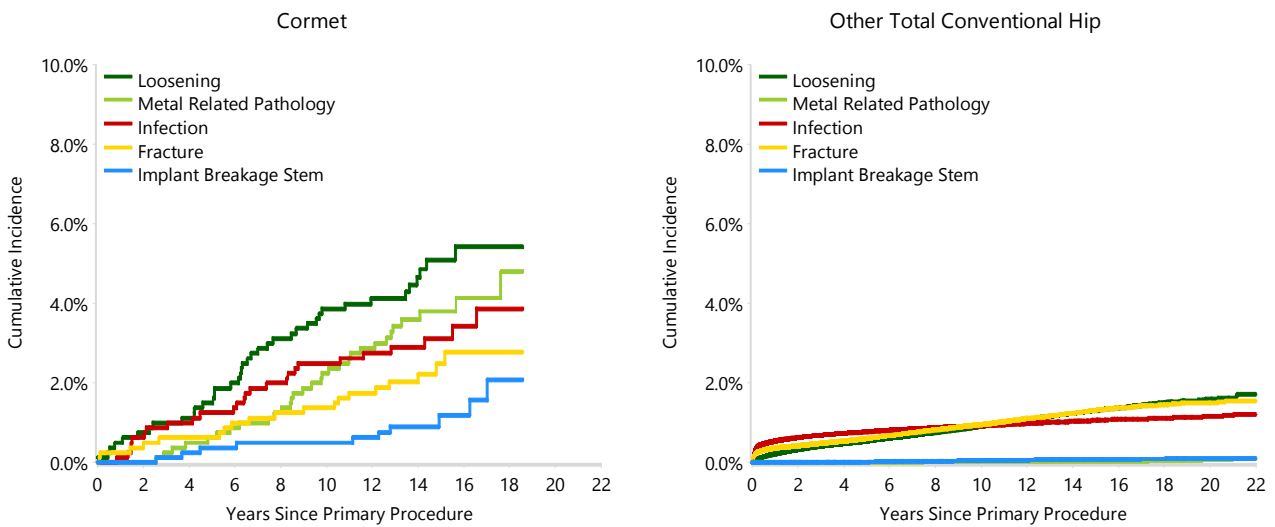


TABLE 5

**Type of Revision Performed for Primary Total Conventional Hip Replacement**

This analysis identifies the components used in the revision of the Cormet total conventional hip prosthesis and compares it to the components used in the revision of all other total conventional hip prostheses.

The reason this analysis is undertaken is to identify whether there is one or more components which are being replaced that differ from the components replaced for revisions of all other total conventional hip prostheses i.e. is there a difference in the type of revision undertaken for the Cormet total conventional hip prosthesis compared to all other total conventional hip prostheses.

**Table 5: Primary Total Conventional Hip Replacement - Type of Revision**

Type of Revision	Cormet		Other Total Conventional Hip	
	Number	Percent	Number	Percent
Femoral Component	23	15.3	5701	32.7
Acetabular Component	62	41.3	3314	19.0
THR (Femoral/Acetabular)	44	29.3	2031	11.6
Cement Spacer	14	9.3	619	3.5
Removal of Prostheses			95	0.5
Reinsertion of Components			27	0.2
Total Femoral			8	0.0
Bipolar Head and Femoral	1	0.7	5	0.0
Saddle			1	0.0
<b>N Major</b>	<b>144</b>	<b>96.0</b>	<b>11801</b>	<b>67.6</b>
Head/Insert	4	2.7	4324	24.8
Head Only	2	1.3	844	4.8
Minor Components			298	1.7
Insert Only			181	1.0
Bipolar Only			2	0.0
Cement Only			1	0.0
Head/Neck			1	0.0
<b>N Minor</b>	<b>6</b>	<b>4.0</b>	<b>5651</b>	<b>32.4</b>
<b>TOTAL</b>	<b>150</b>	<b>100.0</b>	<b>17452</b>	<b>100.0</b>

Note: Prostheses no longer used in 2022 are excluded from the comparator. Procedures using metal/metal prostheses with head size larger than 32mm are excluded from the comparator.

**TABLE 6****Revision Rates of Cormet Primary Total Conventional Hip Replacement by Fixation**

This analysis is provided as some prostheses have more than one fixation option. Additionally there are prostheses where an alternative to the recommended approach to fixation was used e.g. a cementless prosthesis that has been cemented or vice-versa.

**Table 6: Revised Number of Cormet Primary Total Conventional Hip Replacement by Fixation**

Fixation	N Revised	N Total
Cemented	0	1
Cementless	114	629
Hybrid (Femur Cemented)	36	173
<b>TOTAL</b>	<b>150</b>	<b>803</b>

**TABLE 7****Revision Rates of Cormet Primary Total Conventional Hip Replacement by Bearing Surface**

This analysis is provided as some prostheses are combined with a variety of bearing surfaces. All bearing surfaces used with this prosthesis are listed.

**Table 7: Revised Number of Cormet Primary Total Conventional Hip Replacement by Bearing Surface**

Bearing Surface	N Revised	N Total
Metal/Metal	150	803
<b>TOTAL</b>	<b>150</b>	<b>803</b>

TABLE 8

**Revision Rates of Primary Total Conventional Hip Replacement by State**

This enables a state by state variation to be identified for the Cormet total conventional hip prosthesis and provides the comparative data for each of the states for all other total conventional hip prostheses.

The purpose of this analysis is to determine if the higher than anticipated rate of revision has widespread distribution between states. If there is widespread distribution then the reason for the higher than anticipated rate of revision is unlikely to be surgeon specific. If the prosthesis has been used in only a small number of states it is not possible to distinguish if the higher than anticipated rate of revision is related to the prosthesis, surgeon, technique or patient.

**Table 8: Revised Number of Primary Total Conventional Hip Replacement by State**

Component	State	N Revised	N Total
Cormet	NSW	86	508
	VIC	15	49
	QLD	26	106
	SA	4	16
	TAS	19	124
Other Total Conventional Hip	NSW	4728	144768
	VIC	4348	128324
	QLD	3451	86927
	WA	2389	58888
	SA	1621	45638
	TAS	405	16382
	ACT/NT	510	13218
<b>TOTAL</b>		<b>17602</b>	<b>494948</b>

Note: Prostheses no longer used in 2022 are excluded from the comparator. Procedures using metal/metal prostheses with head size larger than 32mm are excluded from the comparator.

**TABLE 9****Number of Revisions of Cormet Primary Total Conventional Hip Replacement by Year of Implant**

This analysis details the number of prostheses reported each year to the Registry for the Cormet total conventional hip prosthesis. It also provides the subsequent number of revisions of the primaries reported in that year.

Primary procedures performed in later years have had less follow up time therefore the number revised is expected to be less than the number revised in earlier years. For example, a primary procedure performed in 2022 has a maximum of one year to be revised, whereas a primary procedure performed in 2020 has a maximum of three years to be revised.

**Table 9: Number of Revisions of Cormet Primary Total Conventional Hip Replacement by Year of Implant**

Year of Implant	Number Revised	Total Number
2001	0	1
2002	1	8
2003	12	53
2004	21	74
2005	37	103
2006	20	114
2007	14	73
2008	24	129
2009	9	124
2010	9	93
2011	3	26
2012	0	4
2013	0	1
<b>TOTAL</b>	<b>150</b>	<b>803</b>

**TABLE 10****Revision Rates of Cormet Primary Total Conventional Hip Replacement by Catalogue Number Range**

Many prostheses have a number of catalogue ranges. The catalogue range is specific to particular design features; more than one catalogue range usually indicates a minor difference in design in a particular Cormet prosthesis.

This analysis has been undertaken to determine if the revision rate varies according to the catalogue number range.

Model	Catalogue Range	Catalogue Description	Cement	Material
<b>Acetabular</b>				
Cormet	179242B-179264B	MOM HAP BI COATED PEGLESS RESURFACING CUP	NO	METAL
Cormet	179544B-179564B	MOM HAP BI COATED DYSPLASIA RESURFACING CUP	NO	METAL
Cormet	479248B-479262B	COCR HAP BI COATED PEGLESS RESURFACING CUP	NO	METAL

**Table 10: Revised Number of Cormet Primary Total Conventional Hip Replacement by Catalogue Number Range**

Acetabular Range	N Revised	N Total
179242B-179264B	148	784
179544B-179564B	1	18
479248B-479262B	1	1
<b>TOTAL</b>	<b>150</b>	<b>803</b>

TABLE 11

**Revision Rates of Cormet Primary Total Conventional Hip Replacement by Component**

A prosthesis may be combined with multiple components. This analysis has been undertaken to determine if the revision rate varies according to the component with which it is combined.

**Table 11: Revised Number of Cormet Primary Total Conventional Hip Replacement by Femoral Stem Component**

Femoral Stem Component	N Revised	N Total
Accolade I	14	25
Acor	22	225
Alpha Fit	0	4
Apex	0	4
CORAIL	0	1
Emperion	0	2
Exeter V40	0	1
Freeman	4	12
Integrale (exch neck)	5	10
Lubinus SP II	1	1
MSA	0	1
Metafix	10	47
Mets	0	1
Proxima	3	14
S-Rom	5	41
SL-Plus	41	202
SLR	0	1
Stability	2	5
Summit	0	1
Synergy	0	1
Taper Fit	29	157
Tri-Fit	14	47
<b>TOTAL</b>	<b>150</b>	<b>803</b>