

ASR Total Conventional Hip Investigation

Note: This analysis compares the ASR acetabular prosthesis with all other total conventional hip prostheses.

This prosthesis has been identified as having a significantly higher rate of revision. For a detailed explanation of the process used by the Registry that results in identification of prostheses that have a higher than anticipated rate of revision please refer to the Prostheses with Higher than Anticipated Rates of Revision chapter of the most recent AOANJRR Annual Report, <https://aoanjrr.sahmri.com/annual-reports-2023>.

Note: Procedures using metal/metal prostheses with head size larger than 32mm are excluded from the comparator. Procedures using prostheses with no recorded use in 2022 are excluded from the comparator.

TABLE 1

Revision Rate of Primary Total Conventional Hip Replacement

The revision rate of the ASR total conventional hip prosthesis is compared to all other total conventional hip prostheses.

Table 1: Revision Rates of Primary Total Conventional Hip Replacement

Component	N Revised	N Total	Obs. Years	Revisions/100 Obs. Yrs (95% CI)
ASR	2063	4421	40749	5.06 (4.85, 5.29)
Other Total Conventional Hip	17452	494145	3081462	0.57 (0.56, 0.57)
TOTAL	19515	498566	3122211	0.63 (0.62, 0.63)

Note: Prostheses no longer used in 2022 are excluded from the comparator. Procedures using metal/metal prostheses with head size larger than 32mm are excluded from the comparator.

TABLE 2

Yearly Cumulative Percent Revision of Primary Total Conventional Hip Replacement

The yearly cumulative percent revision of the ASR total conventional hip prosthesis is compared to all other total conventional hip prostheses.

Table 2: Yearly Cumulative Percent Revision of Primary Total Conventional Hip Replacement

CPR	1 Yr	2 Yrs	3 Yrs	4 Yrs	5 Yrs	6 Yrs	7 Yrs	8 Yrs
ASR	1.9 (1.5, 2.3)	4.5 (3.9, 5.1)	9.6 (8.8, 10.5)	17.2 (16.2, 18.4)	24.5 (23.2, 25.8)	32.2 (30.8, 33.6)	36.8 (35.4, 38.3)	40.4 (38.9, 41.9)
Other Total Conventional Hip	1.7 (1.7, 1.8)	2.2 (2.1, 2.2)	2.5 (2.5, 2.6)	2.8 (2.7, 2.8)	3.1 (3.0, 3.1)	3.4 (3.3, 3.4)	3.6 (3.6, 3.7)	3.9 (3.9, 4.0)

CPR	9 Yrs	10 Yrs	11 Yrs	12 Yrs	13 Yrs	14 Yrs	15 Yrs
ASR	42.8 (41.3, 44.4)	45.1 (43.5, 46.6)	46.5 (44.9, 48.0)	48.1 (46.5, 49.7)	49.2 (47.7, 50.8)	50.5 (48.9, 52.1)	51.4 (49.8, 53.0)
Other Total Conventional Hip	4.3 (4.2, 4.3)	4.6 (4.5, 4.7)	4.9 (4.8, 5.0)	5.3 (5.2, 5.4)	5.7 (5.6, 5.8)	6.1 (6.0, 6.2)	6.5 (6.4, 6.6)

CPR	16 Yrs	17 Yrs	18 Yrs	19 Yrs	20 Yrs	21 Yrs	22 Yrs
ASR	51.7 (50.1, 53.3)	52.8 (51.1, 54.6)					
Other Total Conventional Hip	6.9 (6.8, 7.1)	7.3 (7.1, 7.4)	7.6 (7.4, 7.8)	8.2 (8.0, 8.5)	8.5 (8.2, 8.8)	8.9 (8.5, 9.3)	9.3 (8.8, 9.8)

Note: Prostheses no longer used in 2022 are excluded from the comparator. Procedures using metal/metal prostheses with head size larger than 32mm are excluded from the comparator.

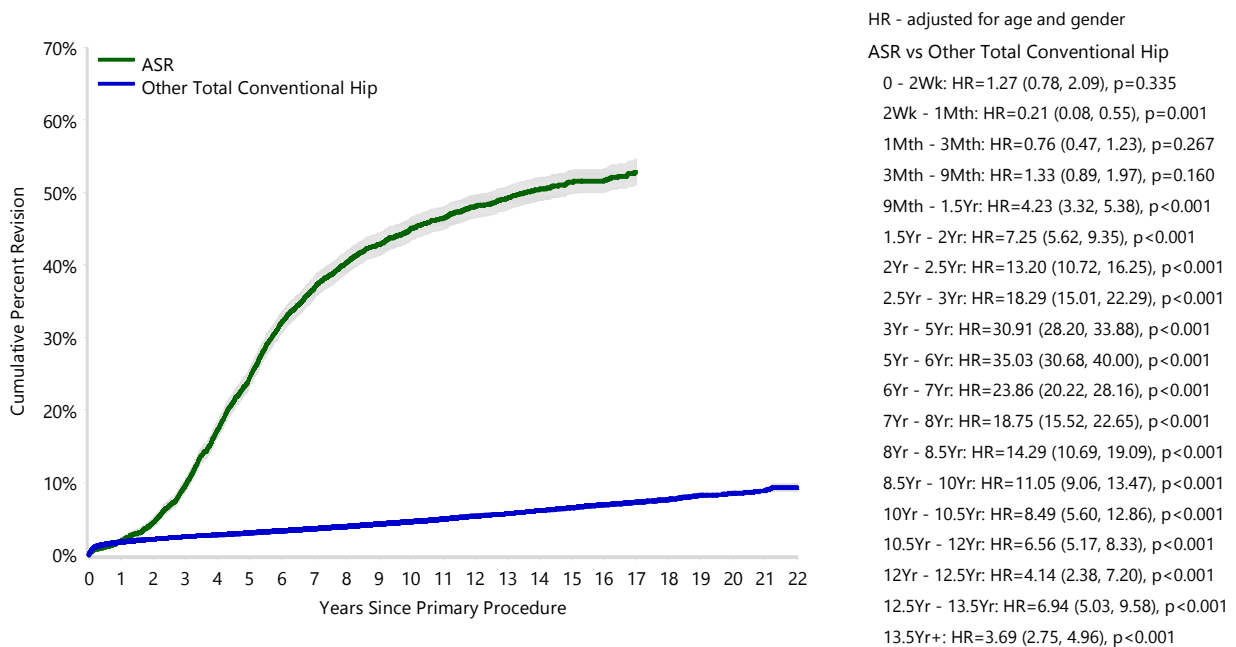
FIGURE 1

Yearly Cumulative Percent Revision of Primary Total Conventional Hip Replacement

The yearly cumulative percent revision of the ASR total conventional hip prosthesis is compared to all other total conventional hip prostheses. In addition, hazard ratios are reported.

Hazard ratios are reported for specific time periods during which the hazard ratio is constant. This is done to enable more specific and valid comparisons of the risk of revision over time. The pattern of variation in risk has important implications with respect to the underlying reasons for any difference.

Figure 1: Cumulative Percent Revision of Primary Total Conventional Hip Replacement



Number at Risk	0 Yr	1 Yr	2 Yrs	3 Yrs	4 Yrs	5 Yrs	6 Yrs	7 Yrs	8 Yrs	9 Yrs	10 Yrs	11 Yrs
ASR	4421	4295	4135	3861	3467	3109	2741	2488	2276	2109	1947	1837
Other Total Conventional Hip	494145	437500	388717	344220	299660	258064	219311	183514	151369	124924	102632	83483

Number at Risk	12 Yrs	13 Yrs	14 Yrs	15 Yrs	16 Yrs	17 Yrs	18 Yrs	19 Yrs	20 Yrs	21 Yrs	22 Yrs
ASR	1712	1608	1354	902	501	193	24	0	0	0	0
Other Total Conventional Hip	66659	51987	39538	29740	22330	16535	11402	7013	3737	1435	252

Note: Prostheses no longer used in 2022 are excluded from the comparator. Procedures using metal/metal prostheses with head size larger than 32mm are excluded from the comparator.

TABLE 3**Primary Diagnosis for Revised Primary Total Conventional Hip Replacement**

This table identifies the diagnosis of the primary procedure which was subsequently revised. This information is provided as there is a variation on outcome depending on the primary diagnosis. It is therefore important when considering the reasons for a higher than anticipated rate of revision that there is identification of the primary diagnosis. This information should be compared to the primary diagnosis for the revisions of all other total conventional hip prostheses.

Table 3: Primary Diagnosis for Revised Primary Total Conventional Hip Replacement

Primary Diagnosis	ASR		Other Total Conventional Hip	
	Number	Percent	Number	Percent
Osteoarthritis	1886	91.4	14432	82.7
Fractured Neck Of Femur	33	1.6	1291	7.4
Osteonecrosis	73	3.5	797	4.6
Developmental Dysplasia	49	2.4	279	1.6
Rheumatoid Arthritis	12	0.6	186	1.1
Failed Internal Fixation	4	0.2	147	0.8
Tumour			145	0.8
Other Inflammatory Arthritis	4	0.2	99	0.6
Fracture/Dislocation	1	0.0	46	0.3
Arthrodesis Takedown	1	0.0	16	0.1
Other			14	0.1
TOTAL	2063	100.0	17452	100.0

Note: Prostheses no longer used in 2022 are excluded from the comparator. Procedures using metal/metal prostheses with head size larger than 32mm are excluded from the comparator.

TABLE 4

Reasons for Revision

This is reported in two ways: a percentage of primary procedures revised and as a percentage of all revision procedures.

% Primaries Revised: This shows the proportional contribution of each revision diagnosis as a percentage of the total number of primary procedures. This percentage can be used to approximate the risk of being revised for that diagnosis. Differing percentages between groups, with the same distribution of follow up time, may identify problems of concern.

% Revisions: The number of revisions for each diagnosis is expressed as a percentage of the total number of revisions. This shows the distribution of reasons for revision within a group but cannot be used as a comparison between groups.

Table 4: Primary Total Conventional Hip Replacement - Reason for Revision (Follow-up Limited to 18.7 Years)

Revision Diagnosis	Number	ASR		Other Total Conventional Hip		
		% Primaries Revised	% Revisions	Number	% Primaries Revised	% Revisions
Prosthesis Dislocation/Instability	27	0.6	1.3	4018	0.8	23.1
Infection	143	3.2	6.9	4002	0.8	23.0
Fracture	65	1.5	3.2	3806	0.8	21.9
Loosening	321	7.3	15.6	3520	0.7	20.2
Metal Related Pathology	1261	28.5	61.1	76	0.0	0.4
Pain	65	1.5	3.2	309	0.1	1.8
Leg Length Discrepancy	4	0.1	0.2	270	0.1	1.6
Malposition	1	0.0	0.0	243	0.0	1.4
Lysis	123	2.8	6.0	194	0.0	1.1
Implant Breakage Stem	5	0.1	0.2	167	0.0	1.0
Implant Breakage Acetabular Insert				120	0.0	0.7
Incorrect Sizing	2	0.0	0.1	102	0.0	0.6
Wear Acetabular Insert				98	0.0	0.6
Implant Breakage Acetabular	9	0.2	0.4	69	0.0	0.4
Wear Head				45	0.0	0.3
Tumour	4	0.1	0.2	41	0.0	0.2
Implant Breakage Head				32	0.0	0.2
Heterotopic Bone	1	0.0	0.0	26	0.0	0.1
Wear Acetabulum	14	0.3	0.7	9	0.0	0.1
Progression Of Disease				2	0.0	0.0
Synovitis	2	0.0	0.1	1	0.0	0.0
Osteonecrosis				1	0.0	0.0
Other	16	0.4	0.8	257	0.1	1.5
N Revision	2063	46.7	100.0	17408	3.5	100.0
N Primary	4421			494145		

Note: This table is restricted to revisions within 18.7 years for all groups to allow a time-matched comparison of revisions.

Note: Prostheses no longer used in 2022 are excluded from the comparator. Procedures using metal/metal prostheses with head size larger than 32mm are excluded from the comparator.

FIGURE 2

Cumulative Incidence Revision Diagnosis of Primary Total Conventional Hip Replacement

This figure details the cumulative incidence of the most common reasons for revision. The five most common reasons for revision are included as long as each of these reasons account for more than 10 procedures or at least 5% of all revisions for the ASR total conventional hip prosthesis. A comparative graph is provided of the cumulative incidence for the same reasons for revisions for all other total conventional hip prostheses.

Figure 2: Cumulative Incidence Revision Diagnosis for Primary Total Conventional Hip Replacement

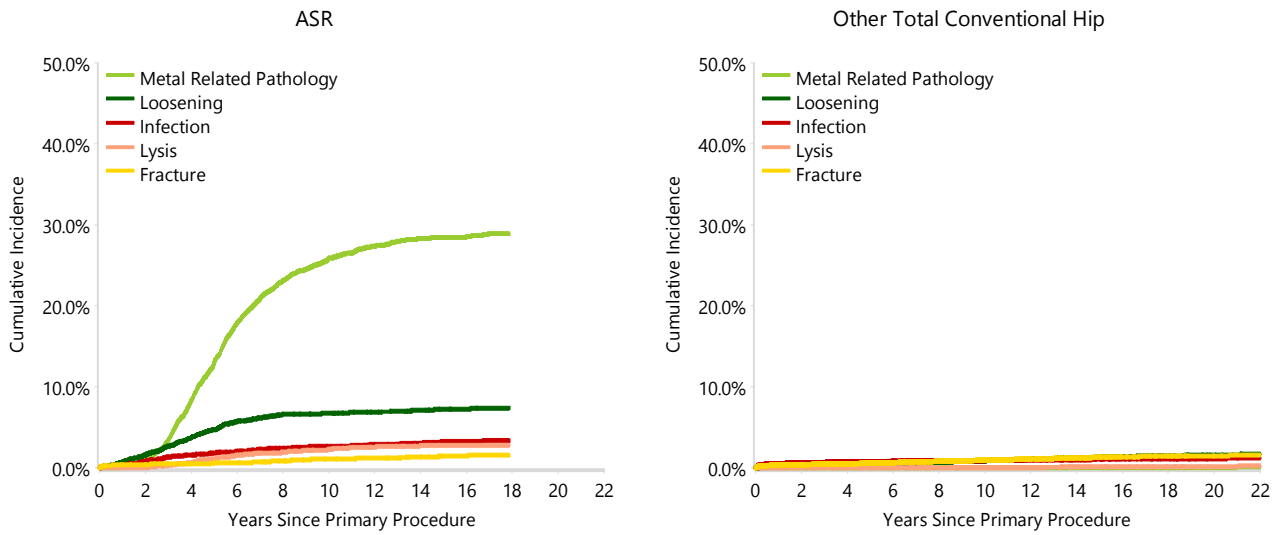


TABLE 5

Type of Revision Performed for Primary Total Conventional Hip Replacement

This analysis identifies the components used in the revision of the ASR total conventional hip prosthesis and compares it to the components used in the revision of all other total conventional hip prostheses.

The reason this analysis is undertaken is to identify whether there is one or more components which are being replaced that differ from the components replaced for revisions of all other total conventional hip prostheses i.e. is there a difference in the type of revision undertaken for the ASR total conventional hip prosthesis compared to all other total conventional hip prostheses.

Table 5: Primary Total Conventional Hip Replacement - Type of Revision (Follow-up Limited to 18.7 Years)

Type of Revision	ASR		Other Total Conventional Hip	
	Number	Percent	Number	Percent
Femoral Component	62	3.0	5691	32.7
Acetabular Component	1559	75.6	3302	19.0
THR (Femoral/Acetabular)	333	16.1	2021	11.6
Cement Spacer	42	2.0	619	3.6
Removal of Prostheses	4	0.2	95	0.5
Reinsertion of Components	1	0.0	27	0.2
Total Femoral			8	0.0
Bipolar Head and Femoral			5	0.0
Saddle			1	0.0
N Major	2001	97.0	11769	67.6
Head/Insert	30	1.5	4312	24.8
Head Only	24	1.2	844	4.8
Minor Components	7	0.3	298	1.7
Insert Only			181	1.0
Bipolar Only	1	0.0	2	0.0
Cement Only			1	0.0
Head/Neck			1	0.0
N Minor	62	3.0	5639	32.4
TOTAL	2063	100.0	17408	100.0

Note: This table is restricted to revisions within 18.7 years for all groups to allow a time-matched comparison of revisions.

Note: Prostheses no longer used in 2022 are excluded from the comparator. Procedures using metal/metal prostheses with head size larger than 32mm are excluded from the comparator.

TABLE 6**Revision Rates of ASR Primary Total Conventional Hip Replacement by Fixation**

This analysis is provided as some prostheses have more than one fixation option. Additionally there are prostheses where an alternative to the recommended approach to fixation was used e.g. a cementless prosthesis that has been cemented or vice-versa.

Table 6: Revised Number of ASR Primary Total Conventional Hip Replacement by Fixation

Fixation	N Revised	N Total
Cemented	0	1
Cementless	2029	4322
Hybrid (Femur Cemented)	33	94
Reverse Hybrid (Femur Cementless)	1	4
TOTAL	2063	4421

TABLE 7**Revision Rates of ASR Primary Total Conventional Hip Replacement by Bearing Surface**

This analysis is provided as some prostheses are combined with a variety of bearing surfaces. All bearing surfaces used with this prosthesis are listed.

Table 7: Revised Number of ASR Primary Total Conventional Hip Replacement by Bearing Surface

Bearing Surface	N Revised	N Total
Metal/Metal	2063	4421
TOTAL	2063	4421

TABLE 8

Revision Rates of Primary Total Conventional Hip Replacement by State

This enables a state by state variation to be identified for the ASR total conventional hip prosthesis and provides the comparative data for each of the states for all other total conventional hip prostheses.

The purpose of this analysis is to determine if the higher than anticipated rate of revision has widespread distribution between states. If there is widespread distribution then the reason for the higher than anticipated rate of revision is unlikely to be surgeon specific. If the prosthesis has been used in only a small number of states it is not possible to distinguish if the higher than anticipated rate of revision is related to the prosthesis, surgeon, technique or patient.

Table 8: Revised Number of Primary Total Conventional Hip Replacement by State

Component	State	N Revised	N Total
ASR	NSW	652	1493
	VIC	275	680
	QLD	335	752
	WA	212	393
	SA	430	778
	TAS	159	325
	Other Total Conventional Hip	NSW	4728
	VIC	4348	128324
	QLD	3451	86927
	WA	2389	58888
	SA	1621	45638
	TAS	405	16382
	ACT/NT	510	13218
TOTAL		19515	498566

Note: Prostheses no longer used in 2022 are excluded from the comparator. Procedures using metal/metal prostheses with head size larger than 32mm are excluded from the comparator.

TABLE 9**Number of Revisions of ASR Primary Total Conventional Hip Replacement by Year of Implant**

This analysis details the number of prostheses reported each year to the Registry for the ASR total conventional hip prosthesis. It also provides the subsequent number of revisions of the primaries reported in that year.

Primary procedures performed in later years have had less follow up time therefore the number revised is expected to be less than the number revised in earlier years. For example, a primary procedure performed in 2022 has a maximum of one year to be revised, whereas a primary procedure performed in 2020 has a maximum of three years to be revised.

Table 9: Number of Revisions of ASR Primary Total Conventional Hip Replacement by Year of Implant

Year of Implant	Number Revised	Total Number
2004	39	84
2005	242	584
2006	436	958
2007	542	1185
2008	576	1180
2009	228	430
TOTAL	2063	4421

TABLE 10

Revision Rates of ASR Primary Total Conventional Hip Replacement by Catalogue Number Range

Many prostheses have a number of catalogue ranges. The catalogue range is specific to particular design features; more than one catalogue range usually indicates a minor difference in design in a particular ASR prosthesis.

This analysis has been undertaken to determine if the revision rate varies according to the catalogue number range.

Model	Catalogue Range	Catalogue Description	Cement	Material	Coating
Acetabular					
ASR	999803944-999806370	ASR TOTAL ACETABULAR IMPLANT	NO	METAL	HA COATED
ASR	999830748-999830766	ACETABULAR COMPONENT	NO	METAL	

Table 10: Revised Number of ASR Primary Total Conventional Hip Replacement by Catalogue Number Range

Acetabular Range	N Revised	N Total
999803944-999806370	2049	4394
999830748-999830766	14	27
TOTAL	2063	4421

TABLE 11**Revision Rates of ASR Primary Total Conventional Hip Replacement by Component**

A prosthesis may be combined with multiple components. This analysis has been undertaken to determine if the revision rate varies according to the component with which it is combined.

Table 11: Revised Number of ASR Primary Total Conventional Hip Replacement by Femoral Stem Component

Femoral Stem Component	N Revised	N Total
C-Stem	3	9
C-Stem AMT	22	72
CLS	2	3
CORAIL	1389	2905
CORAIL RSA	3	4
Echelon	0	1
Fjord	0	2
Generic Stem	0	1
Proxima	3	6
S-Rom	101	261
Silent	8	19
Solution	0	2
Stability	0	1
Summit	528	1128
Taperloc	4	7
TOTAL	2063	4421